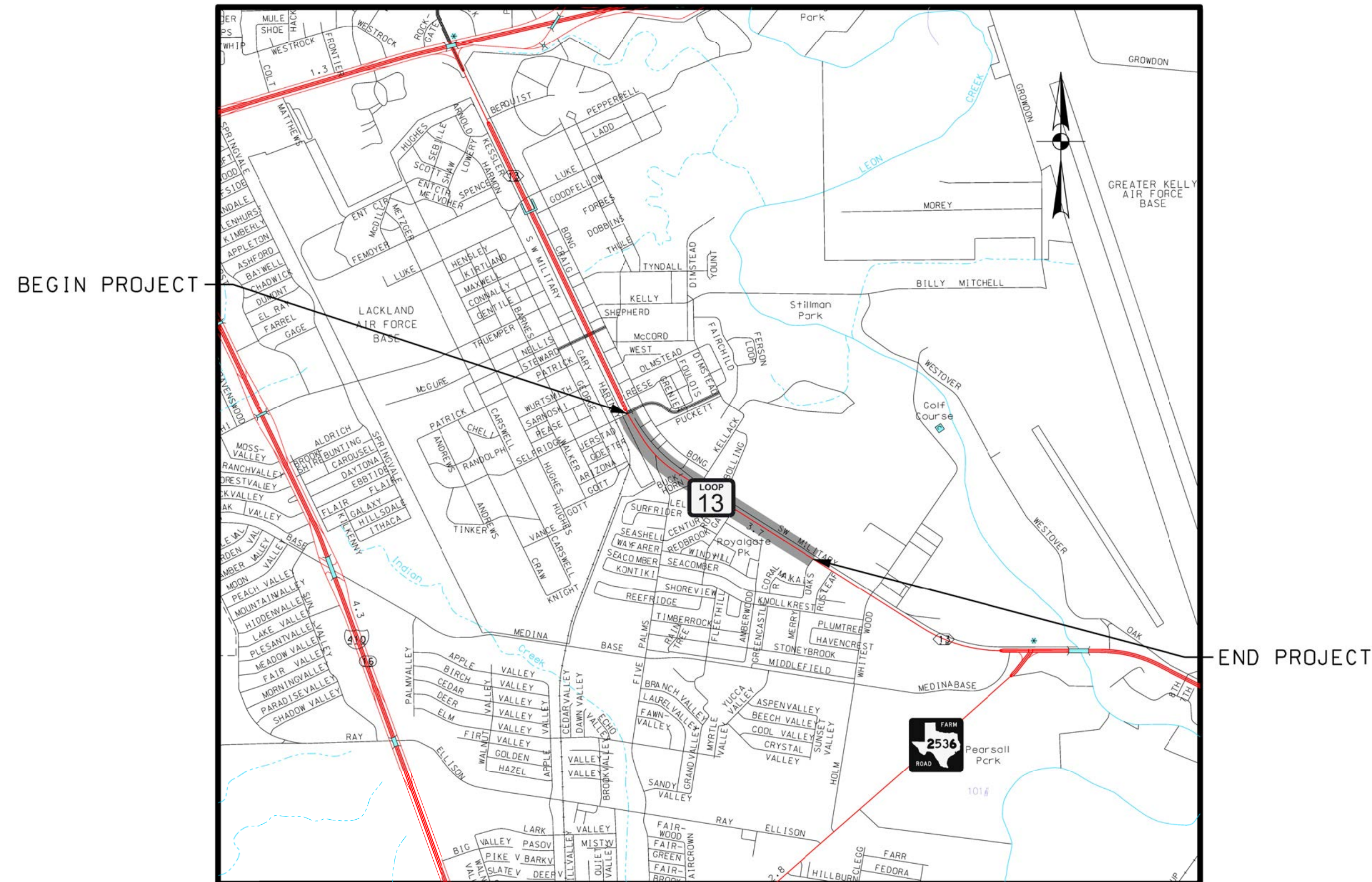


MY LINK
SCHEMATIC LAYOUT

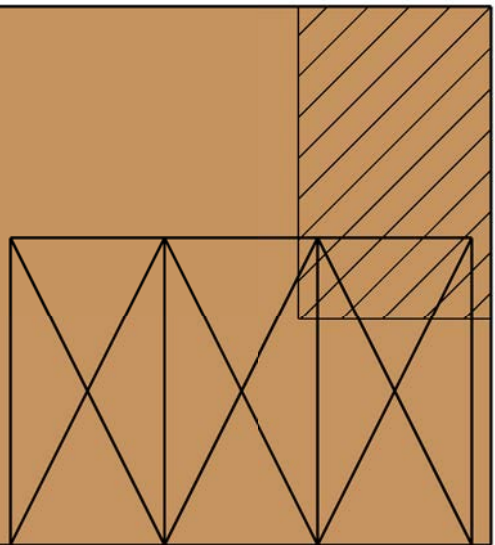
SW MILITARY A

LIMITS: FROM SELFREDGE AVE TO MERRY OAKS DR
(REMAINING LIMITS IN VIA PROJECT 12-394)
LENGTH: 1.0 MILE



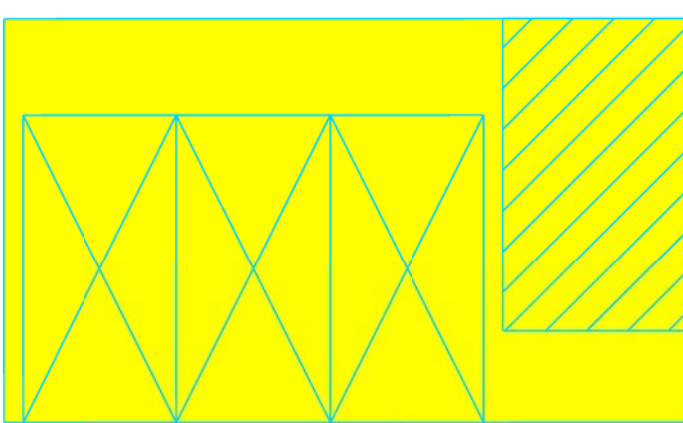
LOCATION MAP

N.T.S.
EXCEPTIONS: NONE
EQUATIONS: NONE
RR-X-INGS: NONE



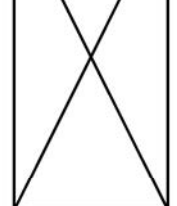
NEXTGEN SUFFICIENT
ROW UNIT DETAIL

N.T.S.

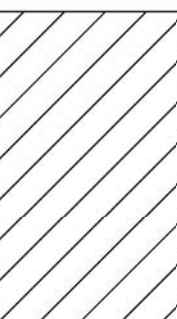


NEXTGEN INSUFFICIENT
ROW UNIT DETAIL

N.T.S.



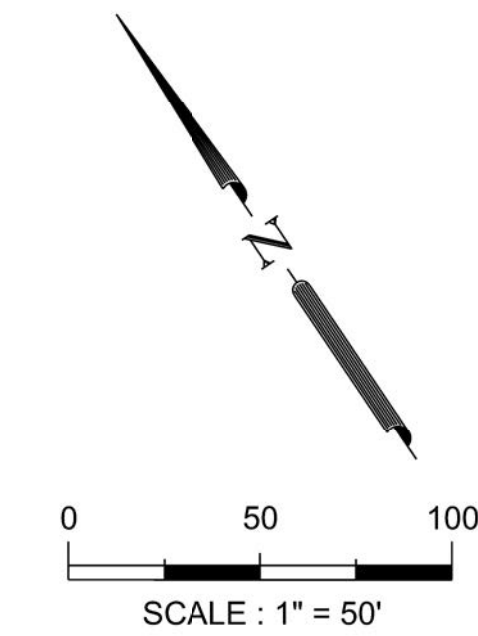
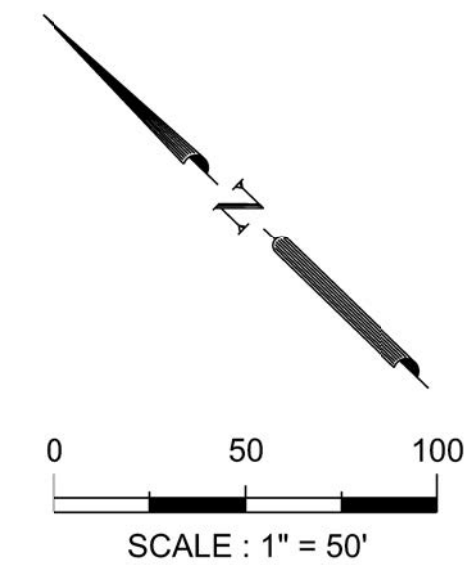
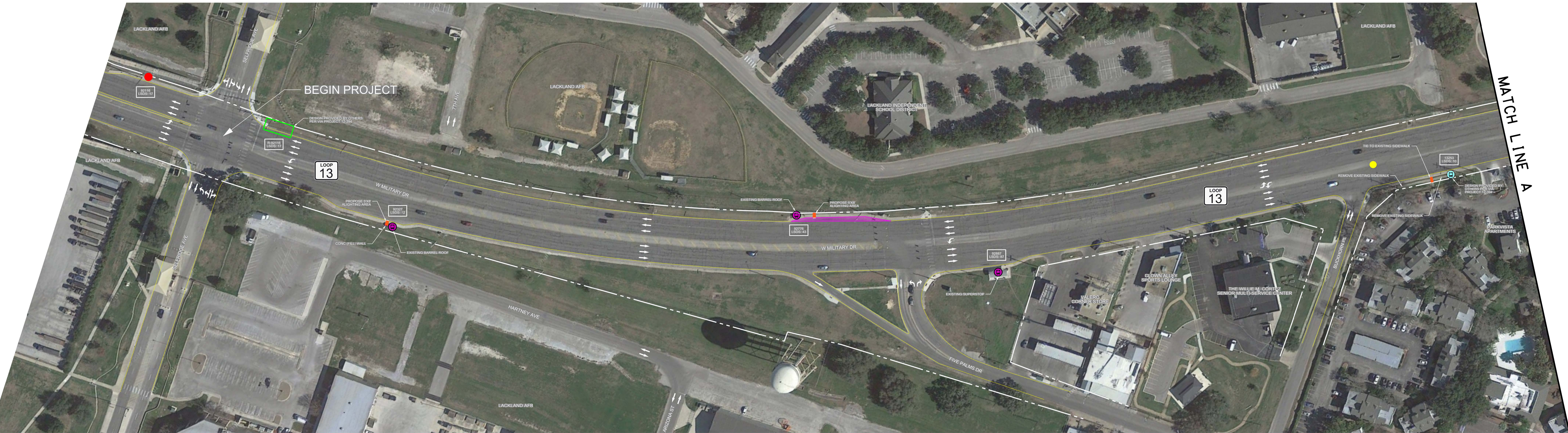
= ONE UNIT



= 5x8' ALIGHTING AREA

PLAN LEGEND

- NEXTGEN INSUFFICIENT ROW TRANSIT STOP
- NEXTGEN SUFFICIENT ROW TRANSIT STOP
- NARROW ROW TRANSIT STOP / BARREL ROOF
- BENCH PAD TRANSIT STOP
- DESIGN CONFLICT
- PROPOSED SIDEWALK
- CONCRETE CURB
- PROPOSED CURB RAMP
- ASPHALT DRIVEWAY
- CONCRETE DRIVEWAY
- SURFACE IMPROVEMENTS
- APPARENT RIGHT OF WAY LINE
- EXIST EDGE OF PAVEMENT
- TRAFFIC FLOW
- EXIST TRANSIT LOCATION TO REMAIN
- EXIST TRANSIT LOCATION TO BE REMOVED
- PEDESTRIAN IMPROVEMENTS NEEDED
- TRANSIT STOP RELOCATION
- FATAL PEDESTRIAN CRASH LOCATION
- NONFATAL PEDESTRIAN CRASH LOCATION



PLAN LEGEND

- NEXTGEN INSUFFICIENT ROW TRANSIT STOP
- NEXTGEN SUFFICIENT ROW TRANSIT STOP
- NARROW ROW TRANSIT STOP / BARREL ROOF
- BENCH PAD TRANSIT STOP
- DESIGN CONFLICT
- PROPOSED SIDEWALK
- CONCRETE CURB
- PROPOSED CURB RAMP
- ASPHALT DRIVEWAY
- CONCRETE DRIVEWAY
- SURFACE IMPROVEMENTS
- APPARENT RIGHT OF WAY LINE
- EXIST EDGE OF PAVEMENT
- TRAFFIC FLOW
- EXIST TRANSIT LOCATION TO REMAIN
- EXIST TRANSIT LOCATION TO BE REMOVED
- PEDESTRIAN IMPROVEMENTS NEEDED
- TRANSIT STOP RELOCATION
- FATAL PEDESTRIAN CRASH LOCATION
- NONFATAL PEDESTRIAN CRASH LOCATION