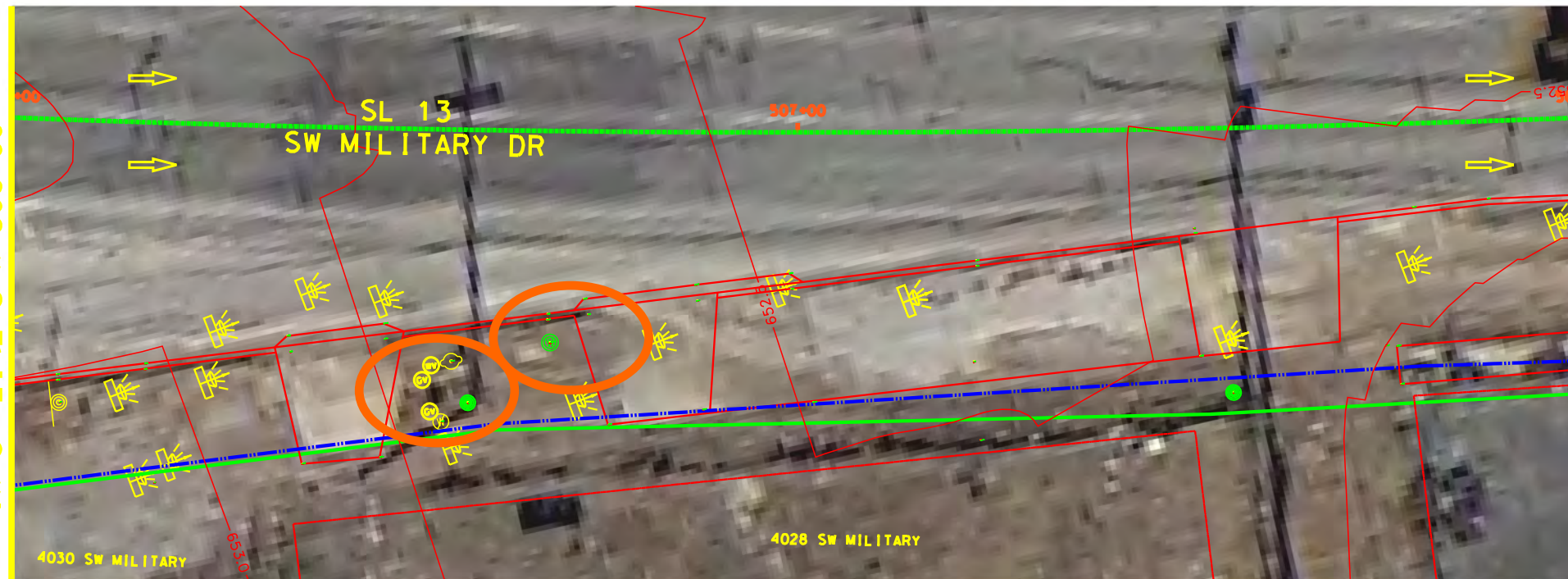


Plotted on 7/16/2018

Design File: P:\111135\07\design\City\Roadway\Small\1113507\Small\1113507.dgn



- NOTES:
- \* FOR CONTRACTOR INFORMATION ONLY
  - 1. THE EXISTENCE AND LOCATION OF ALL UTILITIES AND DRAINAGE STRUCTURES INDICATED IN THE PLANS ARE TAKEN FROM THE BEST RECORDS AVAILABLE AND ARE NOT GUARANTEED TO BE ACCURATE. CONTRACTOR SHALL COORDINATE WITH ALL UTILITY COMPANIES TO FIELD VERIFY UTILITIES PRIOR TO BEGINNING CONSTRUCTION.
  - 2. REFER TO GUIDE SHEET 1113507sample17 LEGEND OF SYMBOLS, SLOPES, AND POINT TABLE INFORMATION

**DESIGN**

INTERIM REVIEW

DOCUMENT INCOMPLETE. NOT INTENDED FOR PERMIT, BIDDING OR CONSTRUCTION.

ENGINEER: JOHN A. TYLER

P.E. SERIAL NO: 105193

DATE: 7/16/2018

**REVIEW AND APPROVAL**

INTERIM REVIEW

DOCUMENT INCOMPLETE. NOT INTENDED FOR PERMIT, BIDDING OR CONSTRUCTION.

ENGINEER: JAMES A. LUTZ

P.E. SERIAL NO: 84722

DATE: 7/16/2018

SCALE: PLAN 1" = 20'

REV. NO.	DATE	DESCRIPTION	BY

**Pape-Dawson ENGINEERS**

SAN ANTONIO | AUSTIN | HOUSTON | FORT WORTH | DALLAS  
 2000 NW LOOP 410 | SAN ANTONIO, TX 78213 | 210.375.9000  
 TBPE FIRM REGISTRATION #470 | TBPLS FIRM REGISTRATION #10028800



SL 13  
 SW MILITARY B

**SIDEWALK CONSTRUCTION PLAN**

BEGIN PROJECT TO STA 508+00

SHEET 1 OF 45

CDM	FED. NO.	STATE	FEDERAL AID PROJECT NO.	HIGHWAY NO.		
CDM	6	TEXAS		VARIES		
CDM	DIST.	COUNTY	CONT. NO.	SECT. NO.	JOB NO.	SHEET NO.
CDM	SAT	BEXAR	0915	12	574	90

Plotted on 7/16/2018

Design File: P:\111135\07\design\City\Roadway\Small\11113507\Small\11113507.dgn



- NOTES:
- \* FOR CONTRACTOR INFORMATION ONLY
  - 1. THE EXISTENCE AND LOCATION OF ALL UTILITIES AND DRAINAGE STRUCTURES INDICATED IN THE PLANS ARE TAKEN FROM THE BEST RECORDS AVAILABLE AND ARE NOT GUARANTEED TO BE ACCURATE. CONTRACTOR SHALL COORDINATE WITH ALL UTILITY COMPANIES TO FIELD VERIFY UTILITIES PRIOR TO BEGINNING CONSTRUCTION.
  - 2. REFER TO GUIDE SHEET 1113507-sample17 LEGEND OF SYMBOLS, SLOPES, AND POINT TABLE INFORMATION

**DESIGN**

**INTERIM REVIEW**

DOCUMENT INCOMPLETE. NOT INTENDED FOR PERMIT, BIDDING OR CONSTRUCTION.  
 ENGINEER: JOHN A. TYLER  
 P.E. SERIAL NO: 105193  
 DATE: 7/16/2018

**REVIEW AND APPROVAL**

**INTERIM REVIEW**

DOCUMENT INCOMPLETE. NOT INTENDED FOR PERMIT, BIDDING OR CONSTRUCTION.  
 ENGINEER: JAMES A. LUTZ  
 P.E. SERIAL NO: 84722  
 DATE: 7/16/2018

SCALE: PLAN 1" = 20'

REV. NO.	DATE	DESCRIPTION	BY

**Pape-Dawson**  
**ENGINEERS**

SAN ANTONIO | AUSTIN | HOUSTON | FORT WORTH | DALLAS  
 2000 NW LOOP 410 | SAN ANTONIO, TX 78213 | 210.375.9000  
TBPE FIRM REGISTRATION #470 | TBPLS FIRM REGISTRATION #10028800



SL 13  
SW MILITARY B

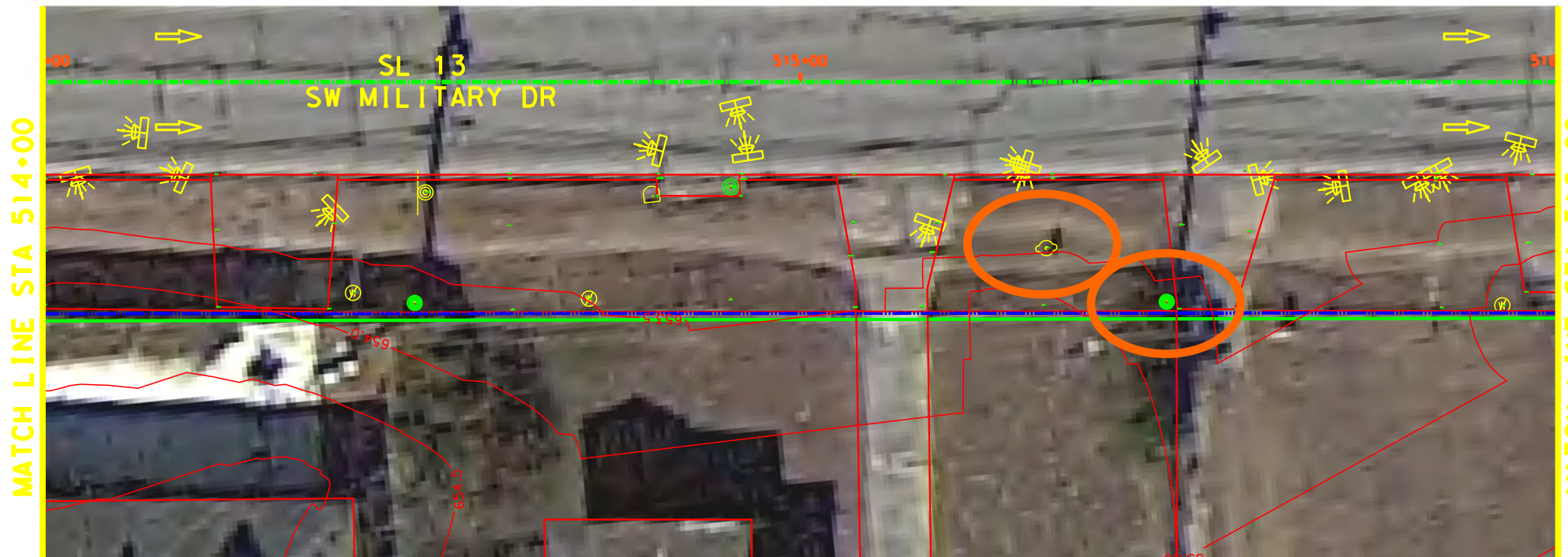
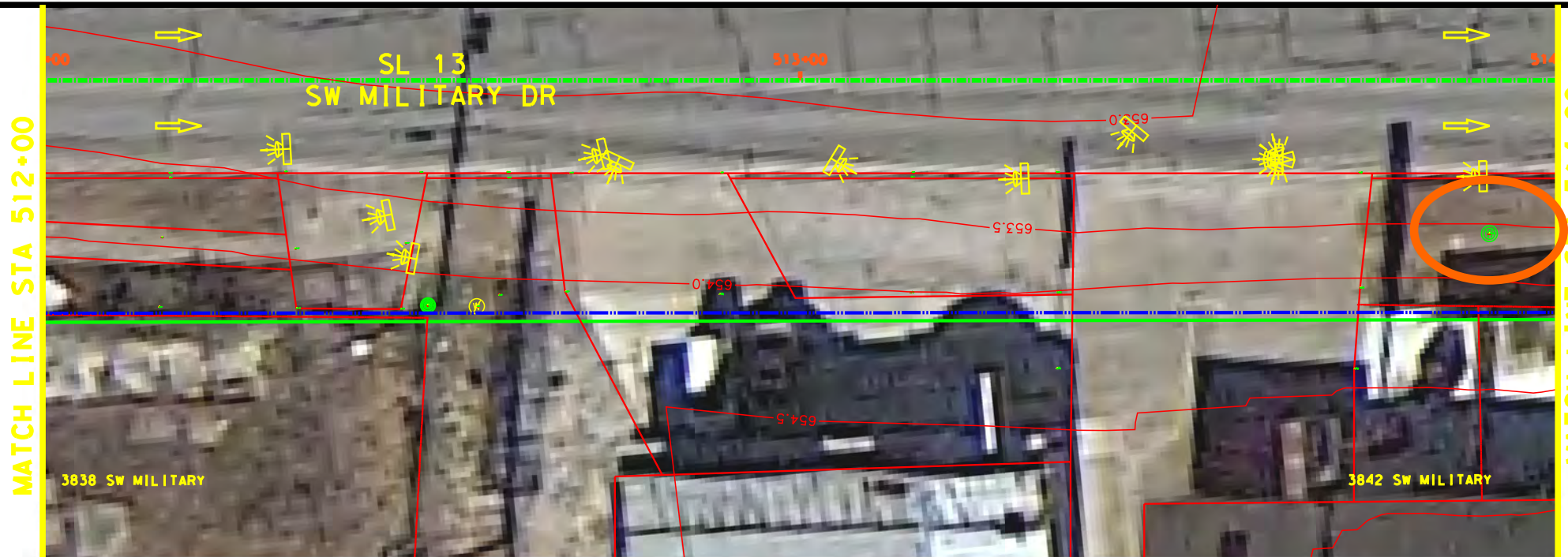
**SIDEWALK  
CONSTRUCTION PLAN**  
STA 508+00 TO STA 512+00

SHEET 2 OF 45

DDM	FED. DIST. NO.	STATE	FEDERAL AID PROJECT NO.	HIGHWAY NO.		
	6	TEXAS		VARIES		
DDM	DIST.	COUNTY	CONT. NO.	SECT. NO.	JOB NO.	SHEET NO.
	SAT	BEXAR	0915	12	574	91

Plotted on 7/16/2018

Design File: P:\111135\07\design\City\Roadway\Small\1113507\Small\1113507.dgn



- NOTES:
- \* FOR CONTRACTOR INFORMATION ONLY
  - 1. THE EXISTENCE AND LOCATION OF ALL UTILITIES AND DRAINAGE STRUCTURES INDICATED IN THE PLANS ARE TAKEN FROM THE BEST RECORDS AVAILABLE AND ARE NOT GUARANTEED TO BE ACCURATE. CONTRACTOR SHALL COORDINATE WITH ALL UTILITY COMPANIES TO FIELD VERIFY UTILITIES PRIOR TO BEGINNING CONSTRUCTION.
  - 2. REFER TO GUIDE SHEET 1113507-sample17 LEGEND OF SYMBOLS, SLOPES, AND POINT TABLE INFORMATION

**DESIGN**

**INTERIM REVIEW**

DOCUMENT INCOMPLETE. NOT INTENDED FOR PERMIT, BIDDING OR CONSTRUCTION.

ENGINEER: JOHN A. TYLER

P.E. SERIAL NO: 105193

DATE: 7/16/2018

**REVIEW AND APPROVAL**

**INTERIM REVIEW**

DOCUMENT INCOMPLETE. NOT INTENDED FOR PERMIT, BIDDING OR CONSTRUCTION.

ENGINEER: JAMES A. LUTZ

P.E. SERIAL NO: 84722

DATE: 7/16/2018

SCALE: PLAN 1" = 20'

REV. NO.	DATE	DESCRIPTION	BY

**Pape-Dawson ENGINEERS**

SAN ANTONIO | AUSTIN | HOUSTON | FORT WORTH | DALLAS  
 2000 NW LOOP 410 | SAN ANTONIO, TX 78213 | 210.375.9000  
 TBPE FIRM REGISTRATION #470 | TBPLS FIRM REGISTRATION #10028800



SL 13  
 SW MILITARY B

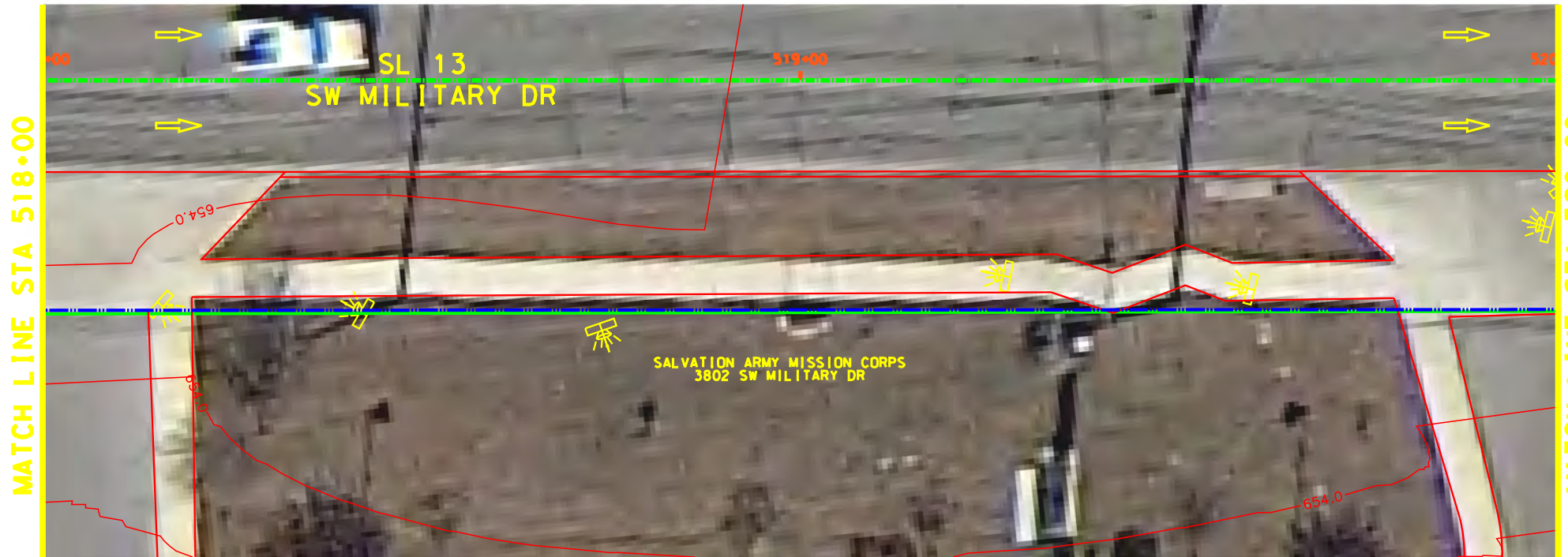
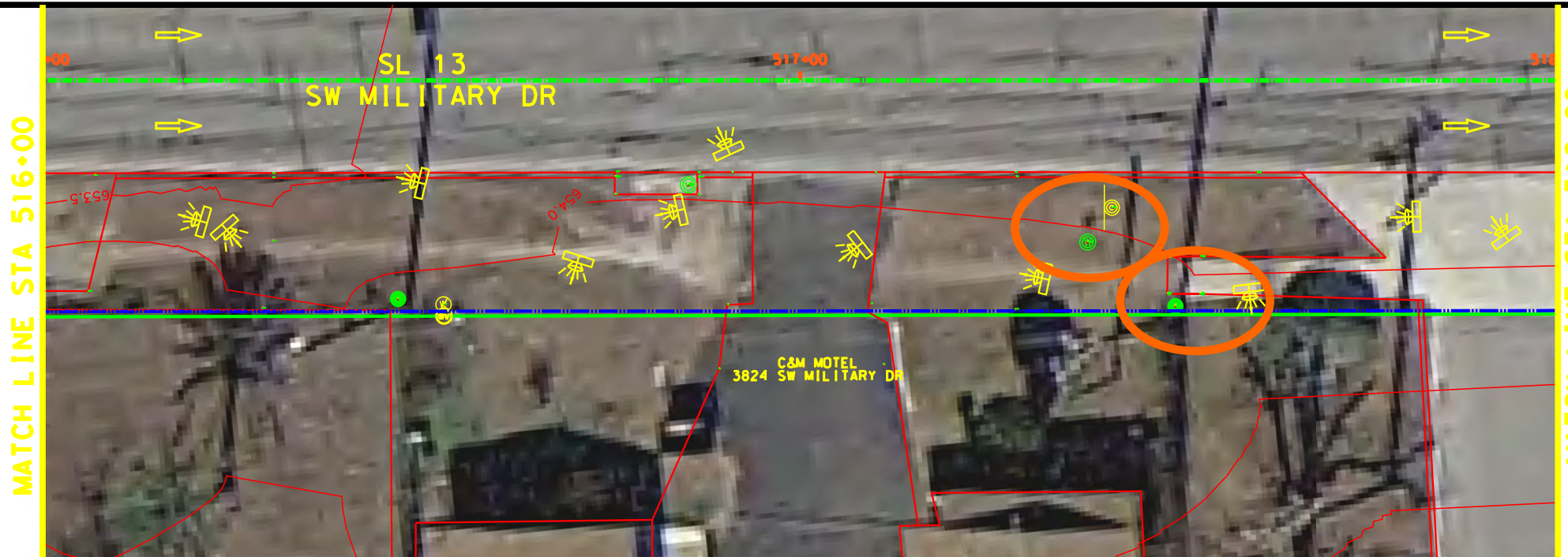
**SIDEWALK CONSTRUCTION PLAN**  
 STA 512+00 TO STA 516+00

SHEET 3 OF 45

DDM	FED. DIST. NO.	STATE	FEDERAL AID PROJECT NO.	HIGHWAY NO.		
	6	TEXAS		VARIABLES		
DDM	DIST.	COUNTY	CONT. NO.	SECT. NO.	JOB NO.	SHEET NO.
	SAT	BEXAR	0915	12	574	92

Plotted on 7/16/2018

Design File: P:\111135\07\design\City\Roadway\Small\11113507\Small\11113507.dgn



- NOTES:
- \* FOR CONTRACTOR INFORMATION ONLY
  - 1. THE EXISTENCE AND LOCATION OF ALL UTILITIES AND DRAINAGE STRUCTURES INDICATED IN THE PLANS ARE TAKEN FROM THE BEST RECORDS AVAILABLE AND ARE NOT GUARANTEED TO BE ACCURATE. CONTRACTOR SHALL COORDINATE WITH ALL UTILITY COMPANIES TO FIELD VERIFY UTILITIES PRIOR TO BEGINNING CONSTRUCTION.
  - 2. REFER TO GUIDE SHEET 1113507-sample17 LEGEND OF SYMBOLS, SLOPES, AND POINT TABLE INFORMATION

**DESIGN**

**INTERIM REVIEW**

DOCUMENT INCOMPLETE. NOT INTENDED FOR PERMIT, BIDDING OR CONSTRUCTION.  
 ENGINEER: JOHN A. TYLER  
 P.E. SERIAL NO: 105193  
 DATE: 7/16/2018

**REVIEW AND APPROVAL**

**INTERIM REVIEW**

DOCUMENT INCOMPLETE. NOT INTENDED FOR PERMIT, BIDDING OR CONSTRUCTION.  
 ENGINEER: JAMES A. LUTZ  
 P.E. SERIAL NO: 84722  
 DATE: 7/16/2018

SCALE: PLAN 1" = 20'

REV. NO.	DATE	DESCRIPTION	BY

**Pape-Dawson**  
**ENGINEERS**

SAN ANTONIO | AUSTIN | HOUSTON | FORT WORTH | DALLAS  
 2000 NW LOOP 410 | SAN ANTONIO, TX 78213 | 210.375.9000  
 TBPE FIRM REGISTRATION #470 | TBPLS FIRM REGISTRATION #10028800



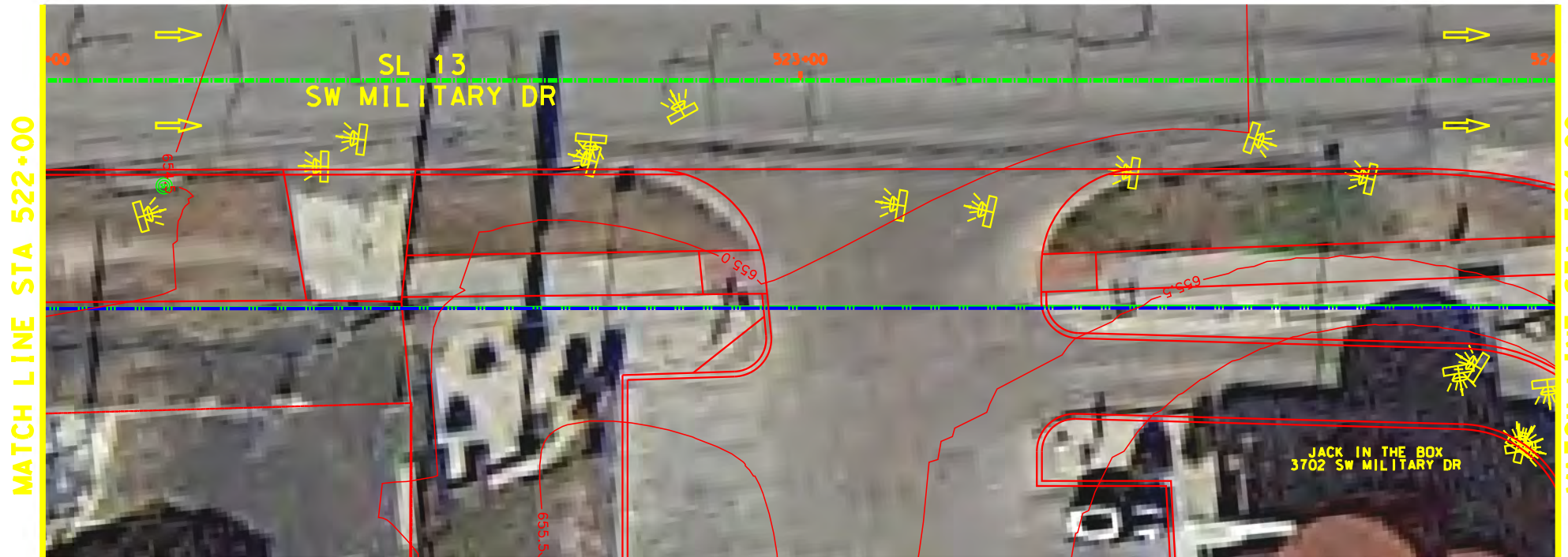
SL 13  
 SW MILITARY B  
**SIDEWALK  
 CONSTRUCTION PLAN**  
 STA 516+00 TO STA 520+00

SHEET 4 OF 45

DDM	FED. DIST. NO.	STATE	FEDERAL AID PROJECT NO.	HIGHWAY NO.		
	6	TEXAS		VARIES		
DDM	DIST.	COUNTY	CONT. NO.	SECT. NO.	JOB NO.	SHEET NO.
	SAT	BEXAR	0915	12	574	93

Plotted on 7/16/2018

Design File: P:\111135\07\design\City\Roadway\Small\1113507\Small\1113507.dgn



NOTES:

- \* FOR CONTRACTOR INFORMATION ONLY
- 1. THE EXISTENCE AND LOCATION OF ALL UTILITIES AND DRAINAGE STRUCTURES INDICATED IN THE PLANS ARE TAKEN FROM THE BEST RECORDS AVAILABLE AND ARE NOT GUARANTEED TO BE ACCURATE. CONTRACTOR SHALL COORDINATE WITH ALL UTILITY COMPANIES TO FIELD VERIFY UTILITIES PRIOR TO BEGINNING CONSTRUCTION.
- 2. REFER TO GUIDE SHEET 1113507sample17 LEGEND OF SYMBOLS, SLOPES, AND POINT TABLE INFORMATION

DESIGN

**INTERIM REVIEW**

DOCUMENT INCOMPLETE. NOT INTENDED FOR PERMIT, BIDDING OR CONSTRUCTION.  
 ENGINEER: JOHN A. TYLER  
 P.E. SERIAL NO: 105193  
 DATE: 7/16/2018

REVIEW AND APPROVAL

**INTERIM REVIEW**

DOCUMENT INCOMPLETE. NOT INTENDED FOR PERMIT, BIDDING OR CONSTRUCTION.  
 ENGINEER: JAMES A. LUTZ  
 P.E. SERIAL NO: 84722  
 DATE: 7/16/2018

SCALE: PLAN 1" = 20'

REV. NO.	DATE	DESCRIPTION	BY

**Pape-Dawson ENGINEERS**

SAN ANTONIO | AUSTIN | HOUSTON | FORT WORTH | DALLAS  
 2000 NW LOOP 410 | SAN ANTONIO, TX 78213 | 210.375.9000  
 TBPE FIRM REGISTRATION #470 | TBPLS FIRM REGISTRATION #10028800

**Texas Department of Transportation**  
 © 2018

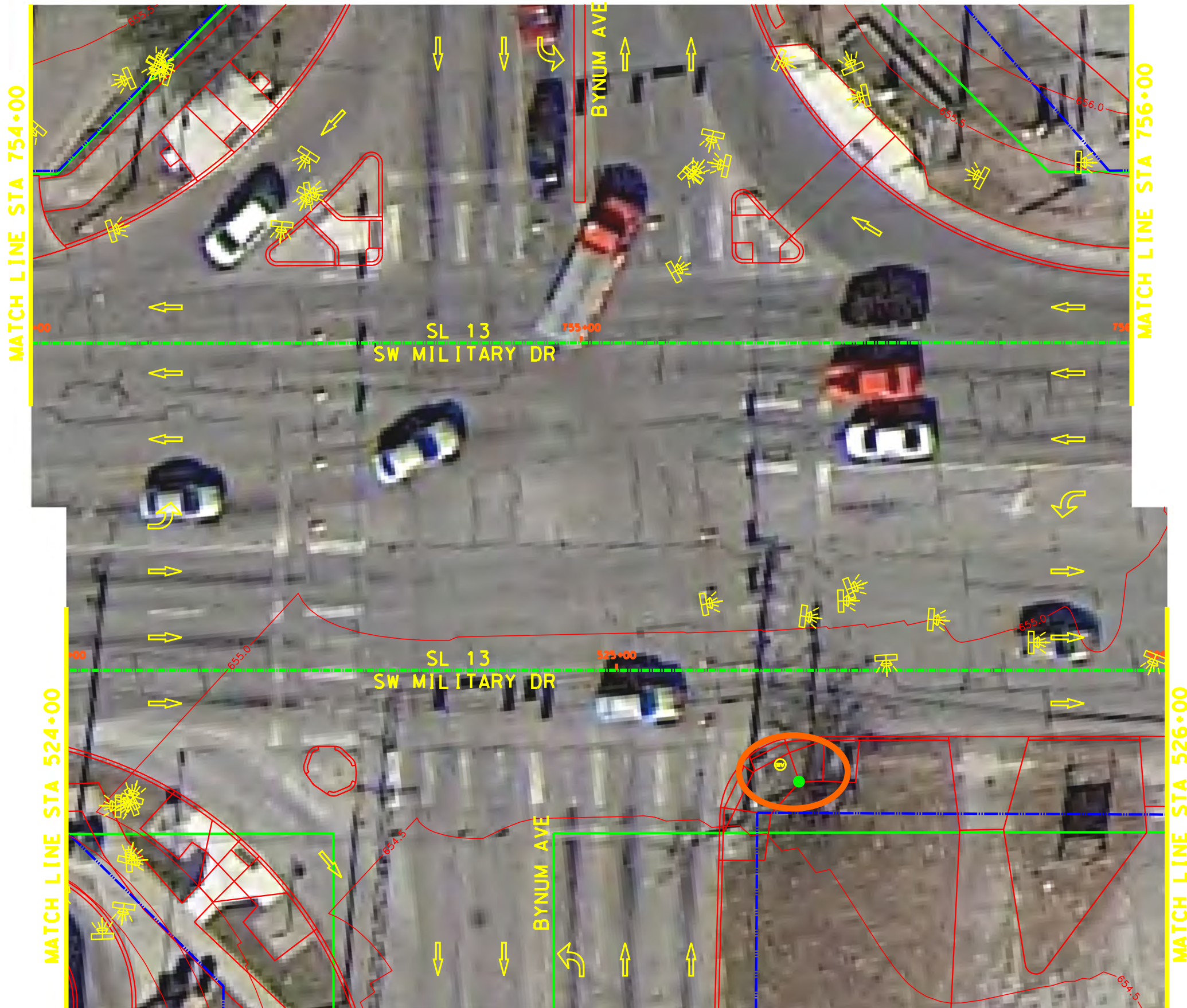
SL 13  
 SW MILITARY B  
**SIDEWALK  
 CONSTRUCTION PLAN**  
 STA 520+00 TO STA 524+00

SHEET 5 OF 45

DDM	FED. DIST. NO.	STATE	FEDERAL AID PROJECT NO.	HIGHWAY NO.		
	6	TEXAS		VARIES		
DDM	DIST.	COUNTY	CONT. NO.	SECT. NO.	JOB NO.	SHEET NO.
	SAT	BEXAR	0915	12	574	94

Plotted on 7/16/2018

Design File: P:\11135\07\design\City\Roadway\Small\1113507\Small\1113507-06.dgn



NOTES:

- \* FOR CONTRACTOR INFORMATION ONLY
- 1. THE EXISTENCE AND LOCATION OF ALL UTILITIES AND DRAINAGE STRUCTURES INDICATED IN THE PLANS ARE TAKEN FROM THE BEST RECORDS AVAILABLE AND ARE NOT GUARANTEED TO BE ACCURATE. CONTRACTOR SHALL COORDINATE WITH ALL UTILITY COMPANIES TO FIELD VERIFY UTILITIES PRIOR TO BEGINNING CONSTRUCTION.
- 2. REFER TO GUIDE SHEET 1113507-sample17 LEGEND OF SYMBOLS, SLOPES, AND POINT TABLE INFORMATION

DESIGN

INTERIM REVIEW	
DOCUMENT INCOMPLETE. NOT INTENDED FOR PERMIT, BIDDING OR CONSTRUCTION.	
ENGINEER: JOHN A. TYLER	
P.E. SERIAL NO: 105193	
DATE: 7/16/2018	

REVIEW AND APPROVAL

INTERIM REVIEW	
DOCUMENT INCOMPLETE. NOT INTENDED FOR PERMIT, BIDDING OR CONSTRUCTION.	
ENGINEER: JAMES A. LUTZ	
P.E. SERIAL NO: 84722	
DATE: 7/16/2018	

SCALE: PLAN 1" = 20'

REV. NO.	DATE	DESCRIPTION	BY



SAN ANTONIO | AUSTIN | HOUSTON | FORT WORTH | DALLAS  
 2000 NW LOOP 410 | SAN ANTONIO, TX 78213 | 210.375.9000  
 TBPE FIRM REGISTRATION #470 | TBPLS FIRM REGISTRATION #10028800

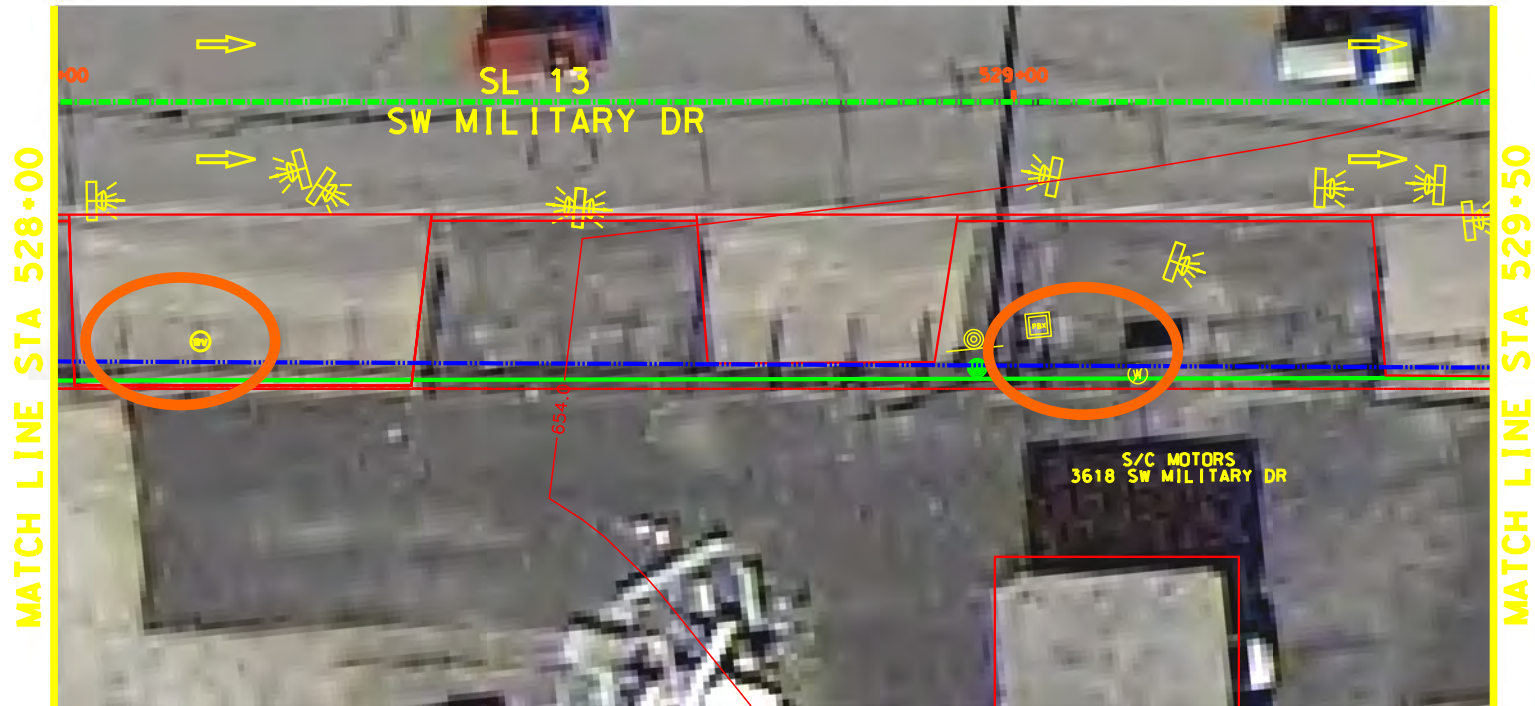


SL 13  
 SW MILITARY B  
**SIDEWALK  
 CONSTRUCTION PLAN**  
 STA 524+00 TO STA 526+00  
 STA 754+00 TO STA 756+00  
 SHEET 6 OF 45

DDM	FED. DIST. NO.	STATE	FEDERAL AID PROJECT NO.	HIGHWAY NO.		
	6	TEXAS		VARIES		
DDM	DIST.	COUNTY	CONT. NO.	SECT. NO.	JOB NO.	SHEET NO.
	SAT	BEXAR	0915	12	574	95

Plotted on 7/16/2018

Design File: P:\111135\07\design\City\Roadway\Small\11113507\Small\11113507.dgn



NOTES:

- \* FOR CONTRACTOR INFORMATION ONLY
- 1. THE EXISTENCE AND LOCATION OF ALL UTILITIES AND DRAINAGE STRUCTURES INDICATED IN THE PLANS ARE TAKEN FROM THE BEST RECORDS AVAILABLE AND ARE NOT GUARANTEED TO BE ACCURATE. CONTRACTOR SHALL COORDINATE WITH ALL UTILITY COMPANIES TO FIELD VERIFY UTILITIES PRIOR TO BEGINNING CONSTRUCTION.
- 2. REFER TO GUIDE SHEET 1113507sample17 LEGEND OF SYMBOLS, SLOPES, AND POINT TABLE INFORMATION

DESIGN

**INTERIM REVIEW**

DOCUMENT INCOMPLETE. NOT INTENDED FOR PERMIT, BIDDING OR CONSTRUCTION.  
 ENGINEER: JOHN A. TYLER  
 P.E. SERIAL NO: 105193  
 DATE: 7/16/2018

REVIEW AND APPROVAL

**INTERIM REVIEW**

DOCUMENT INCOMPLETE. NOT INTENDED FOR PERMIT, BIDDING OR CONSTRUCTION.  
 ENGINEER: JAMES A. LUTZ  
 P.E. SERIAL NO: 84722  
 DATE: 7/16/2018

SCALE: PLAN 1" = 20'

REV. NO.	DATE	DESCRIPTION	BY



SAN ANTONIO | AUSTIN | HOUSTON | FORT WORTH | DALLAS  
 2000 NW LOOP 410 | SAN ANTONIO, TX 78213 | 210.375.9000  
 TBPE FIRM REGISTRATION #470 | TBPLS FIRM REGISTRATION #10028800



SL 13  
 SW MILITARY B  
**SIDEWALK  
 CONSTRUCTION PLAN**  
 STA 526+00 TO STA 529+50

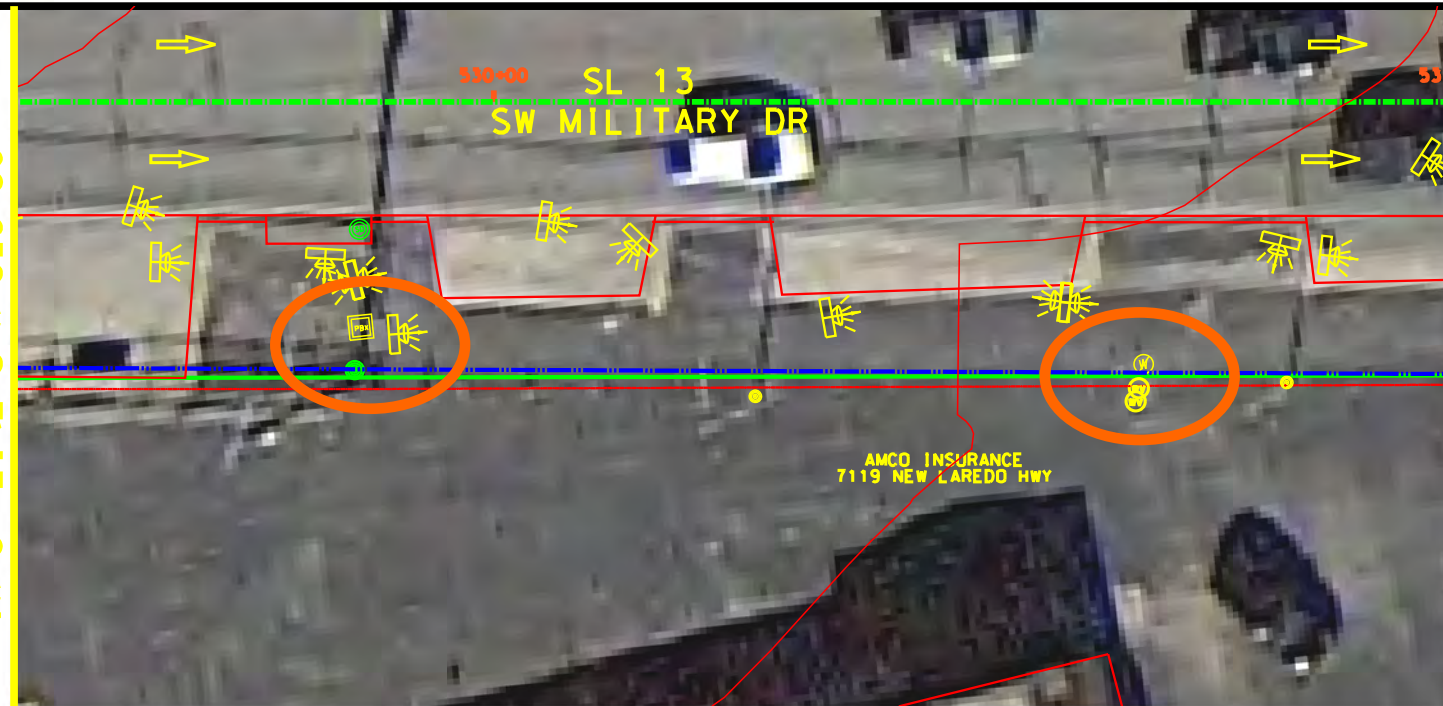
SHEET 7 OF 45

DDM	FED. DIST. NO.	STATE	FEDERAL AID PROJECT NO.	HIGHWAY NO.		
	6	TEXAS		VARIES		
DDM	DIST.	COUNTY	CONT. NO.	SECT. NO.	JOB NO.	SHEET NO.
	SAT	BEXAR	0915	12	574	96

Plotted on 7/16/2018

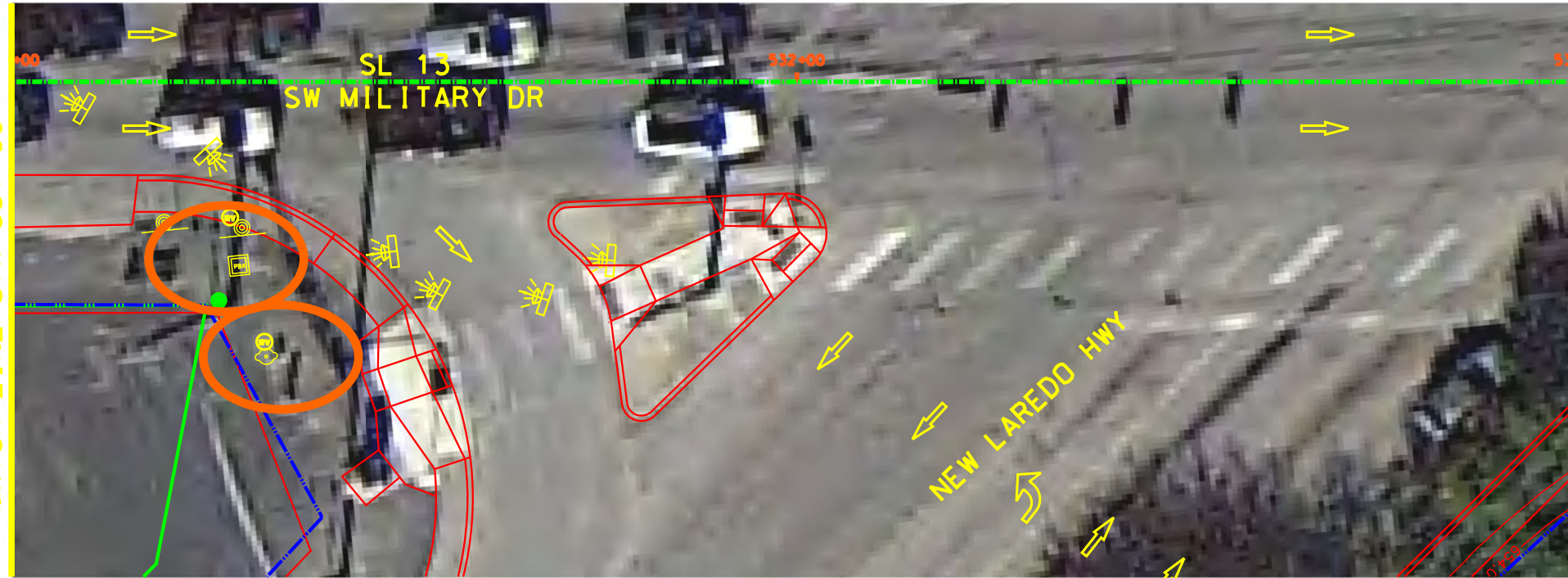
Design File: P:\111135\07\design\City\Roadway\Small\1113507\Small\1113507-08.dgn

MATCH LINE STA 529+50



MATCH LINE STA 531+00

MATCH LINE STA 531+00



MATCH LINE STA 533+00

NOTES:

- \* FOR CONTRACTOR INFORMATION ONLY
- 1. THE EXISTENCE AND LOCATION OF ALL UTILITIES AND DRAINAGE STRUCTURES INDICATED IN THE PLANS ARE TAKEN FROM THE BEST RECORDS AVAILABLE AND ARE NOT GUARANTEED TO BE ACCURATE. CONTRACTOR SHALL COORDINATE WITH ALL UTILITY COMPANIES TO FIELD VERIFY UTILITIES PRIOR TO BEGINNING CONSTRUCTION.
- 2. REFER TO GUIDE SHEET 1113507-sample17 LEGEND OF SYMBOLS, SLOPES, AND POINT TABLE INFORMATION

DESIGN

**INTERIM REVIEW**  
 DOCUMENT INCOMPLETE. NOT INTENDED FOR PERMIT, BIDDING OR CONSTRUCTION.  
 ENGINEER: JOHN A. TYLER  
 P.E. SERIAL NO: 105193  
 DATE: 7/16/2018

REVIEW AND APPROVAL

**INTERIM REVIEW**  
 DOCUMENT INCOMPLETE. NOT INTENDED FOR PERMIT, BIDDING OR CONSTRUCTION.  
 ENGINEER: JAMES A. LUTZ  
 P.E. SERIAL NO: 84722  
 DATE: 7/16/2018

SCALE: PLAN 1" = 20'

REV. NO.	DATE	DESCRIPTION	BY



SAN ANTONIO | AUSTIN | HOUSTON | FORT WORTH | DALLAS  
 2000 NW LOOP 410 | SAN ANTONIO, TX 78213 | 210.375.9000  
 TBPE FIRM REGISTRATION #470 | TBPLS FIRM REGISTRATION #10028800



SL 13  
 SW MILITARY B  
 SIDEWALK  
 CONSTRUCTION PLAN  
 STA 529+50 TO STA 533+00

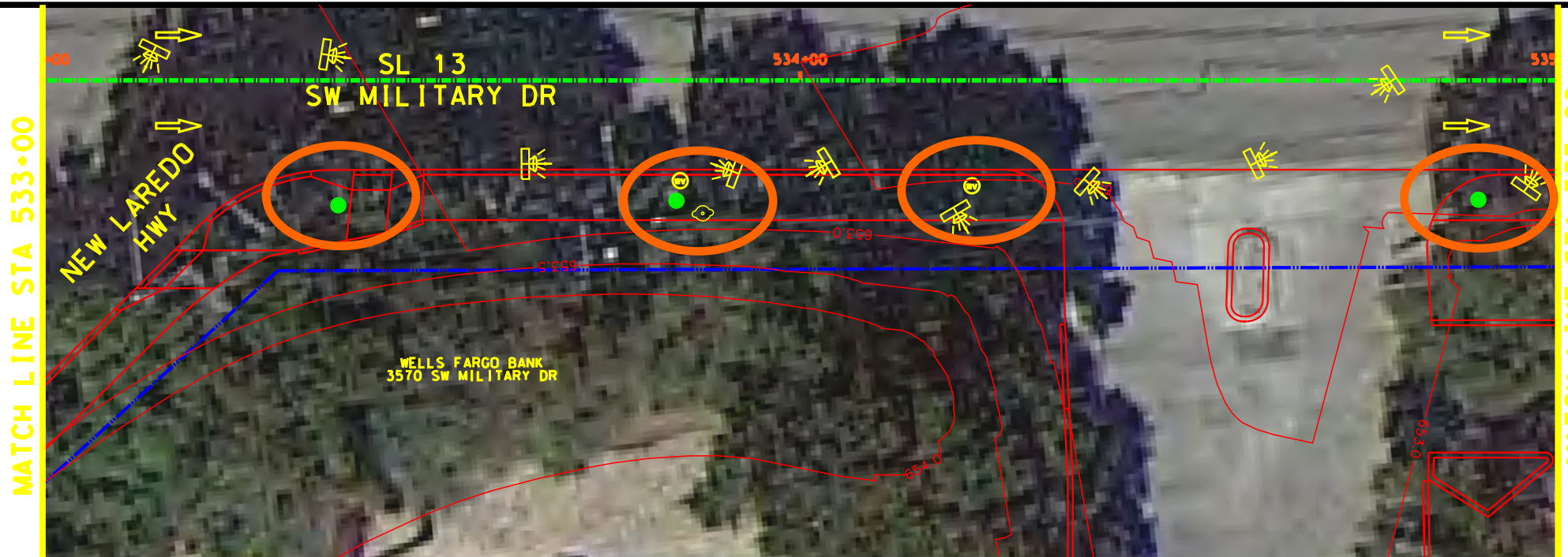
SHEET 8 OF 45

DDM	FED. DIST. NO.	STATE	FEDERAL AID PROJECT NO.	HIGHWAY NO.		
	6	TEXAS		VARIES		
DDM	DIST.	COUNTY	CONT. NO.	SECT. NO.	JOB NO.	SHEET NO.
	SAT	BEXAR	0915	12	574	97



Plotted on 7/16/2018

Design File: P:\111135\07\design\City\Roadway\Small\1113507\Small\1113507-09.dgn



- NOTES:
- \* FOR CONTRACTOR INFORMATION ONLY
  - 1. THE EXISTENCE AND LOCATION OF ALL UTILITIES AND DRAINAGE STRUCTURES INDICATED IN THE PLANS ARE TAKEN FROM THE BEST RECORDS AVAILABLE AND ARE NOT GUARANTEED TO BE ACCURATE. CONTRACTOR SHALL COORDINATE WITH ALL UTILITY COMPANIES TO FIELD VERIFY UTILITIES PRIOR TO BEGINNING CONSTRUCTION.
  - 2. REFER TO GUIDE SHEET 1113507-sample17 LEGEND OF SYMBOLS, SLOPES, AND POINT TABLE INFORMATION

**DESIGN**

**INTERIM REVIEW**

DOCUMENT INCOMPLETE. NOT INTENDED FOR PERMIT, BIDDING OR CONSTRUCTION.

ENGINEER: JOHN A. TYLER

P.E. SERIAL NO: 105193

DATE: 7/16/2018

**REVIEW AND APPROVAL**

**INTERIM REVIEW**

DOCUMENT INCOMPLETE. NOT INTENDED FOR PERMIT, BIDDING OR CONSTRUCTION.

ENGINEER: JAMES A. LUTZ

P.E. SERIAL NO: 84722

DATE: 7/16/2018

SCALE: PLAN 1" = 20'

REV. NO.	DATE	DESCRIPTION	BY

**Pape-Dawson Engineers**

SAN ANTONIO | AUSTIN | HOUSTON | FORT WORTH | DALLAS  
 2000 NW LOOP 410 | SAN ANTONIO, TX 78213 | 210.375.9000  
 TBPE FIRM REGISTRATION #470 | TBPLS FIRM REGISTRATION #10028800



SL 13  
 SW MILITARY B

**SIDEWALK CONSTRUCTION PLAN**

STA 533+00 TO STA 537+00

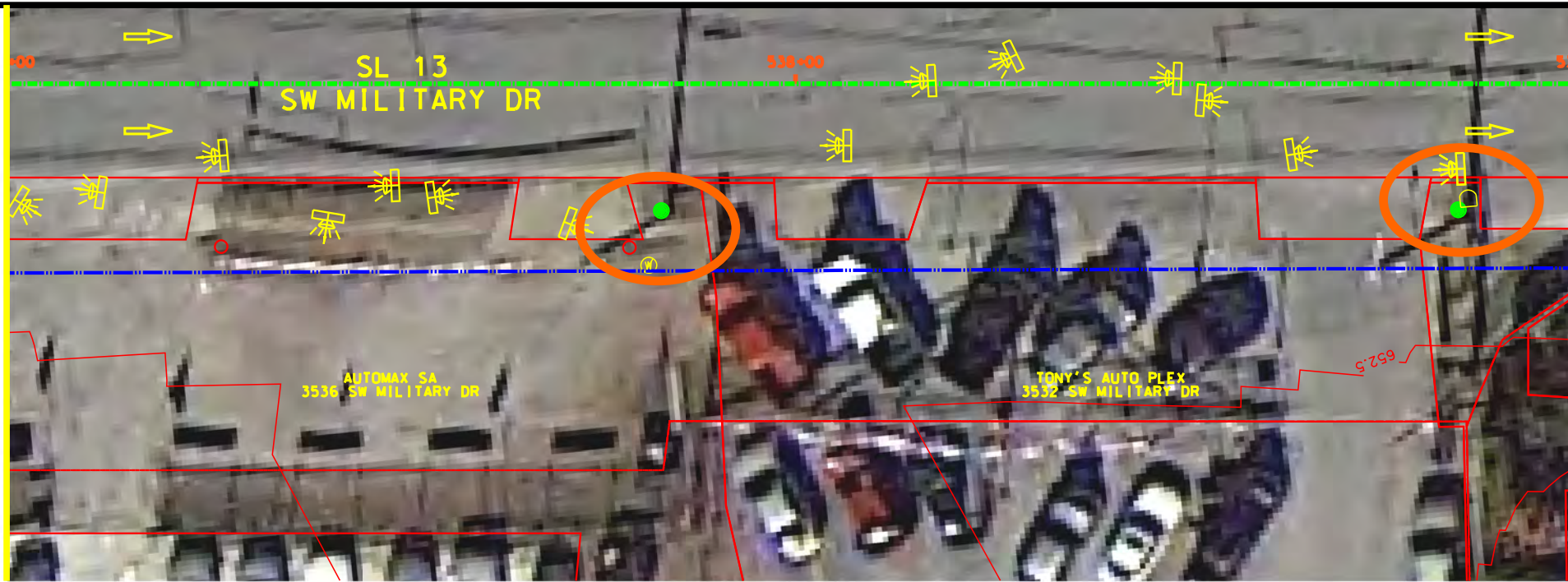
SHEET 9 OF 45

DDM	FED. DIST. NO.	STATE	FEDERAL AID PROJECT NO.	HIGHWAY NO.		
	6	TEXAS		VARIES		
DDM	DIST.	COUNTY	CONT. NO.	SECT. NO.	JOB NO.	SHEET NO.
	SAT	BEXAR	0915	12	574	98

Plotted on 7/16/2018

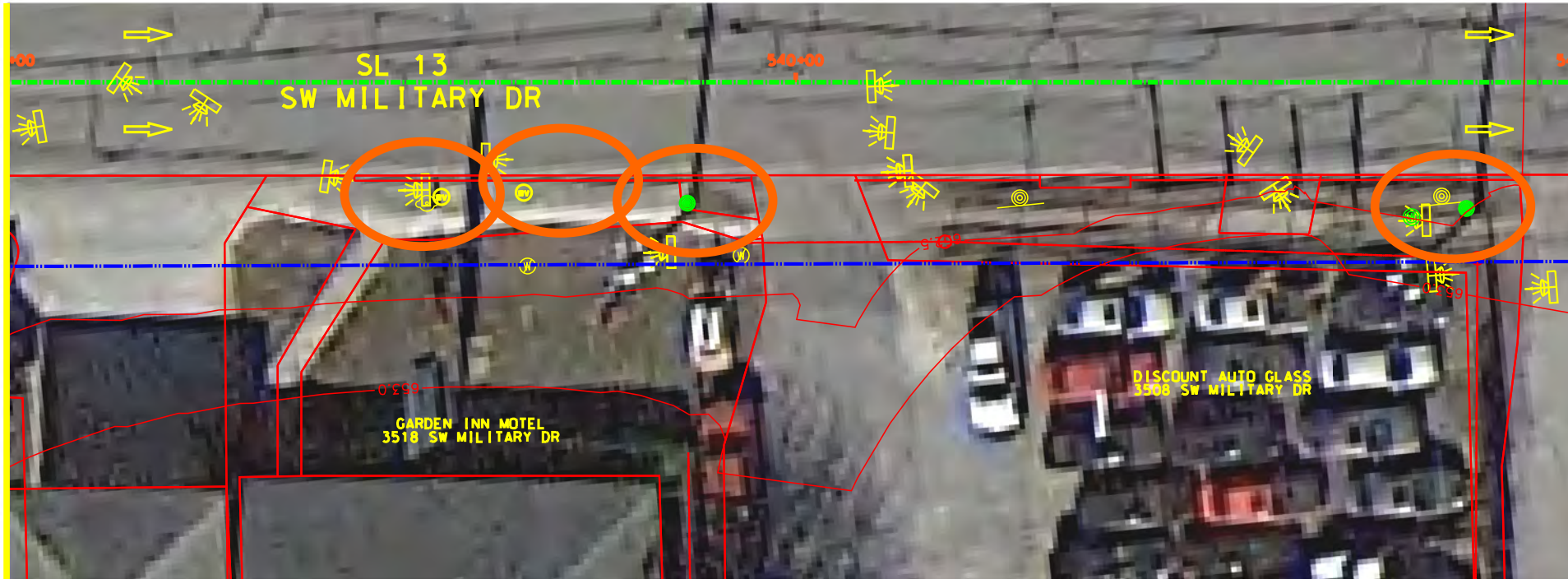
Design File: P:\111135\07\design\City\Roadway\Small\11113507\Small\11113507.dgn

MATCH LINE STA 537+00



MATCH LINE STA 539+00

MATCH LINE STA 539+00



MATCH LINE STA 541+00

- NOTES:
- \* FOR CONTRACTOR INFORMATION ONLY
  - 1. THE EXISTENCE AND LOCATION OF ALL UTILITIES AND DRAINAGE STRUCTURES INDICATED IN THE PLANS ARE TAKEN FROM THE BEST RECORDS AVAILABLE AND ARE NOT GUARANTEED TO BE ACCURATE. CONTRACTOR SHALL COORDINATE WITH ALL UTILITY COMPANIES TO FIELD VERIFY UTILITIES PRIOR TO BEGINNING CONSTRUCTION.
  - 2. REFER TO GUIDE SHEET 1113507-sample17 LEGEND OF SYMBOLS, SLOPES, AND POINT TABLE INFORMATION

DESIGN  
**INTERIM REVIEW**  
 DOCUMENT INCOMPLETE. NOT INTENDED FOR PERMIT, BIDDING OR CONSTRUCTION.  
 ENGINEER: JOHN A. TYLER  
 P.E. SERIAL NO: 105193  
 DATE: 7/16/2018

REVIEW AND APPROVAL  
**INTERIM REVIEW**  
 DOCUMENT INCOMPLETE. NOT INTENDED FOR PERMIT, BIDDING OR CONSTRUCTION.  
 ENGINEER: JAMES A. LUTZ  
 P.E. SERIAL NO: 84722  
 DATE: 7/16/2018

SCALE: PLAN 1" = 20'

REV. NO.	DATE	DESCRIPTION	BY

**Pape-Dawson Engineers**  
 SAN ANTONIO | AUSTIN | HOUSTON | FORT WORTH | DALLAS  
 2000 NW LOOP 410 | SAN ANTONIO, TX 78213 | 210.375.9000  
 TBPE FIRM REGISTRATION #470 | TBPLS FIRM REGISTRATION #10028800

Texas Department of Transportation  
 © 2018

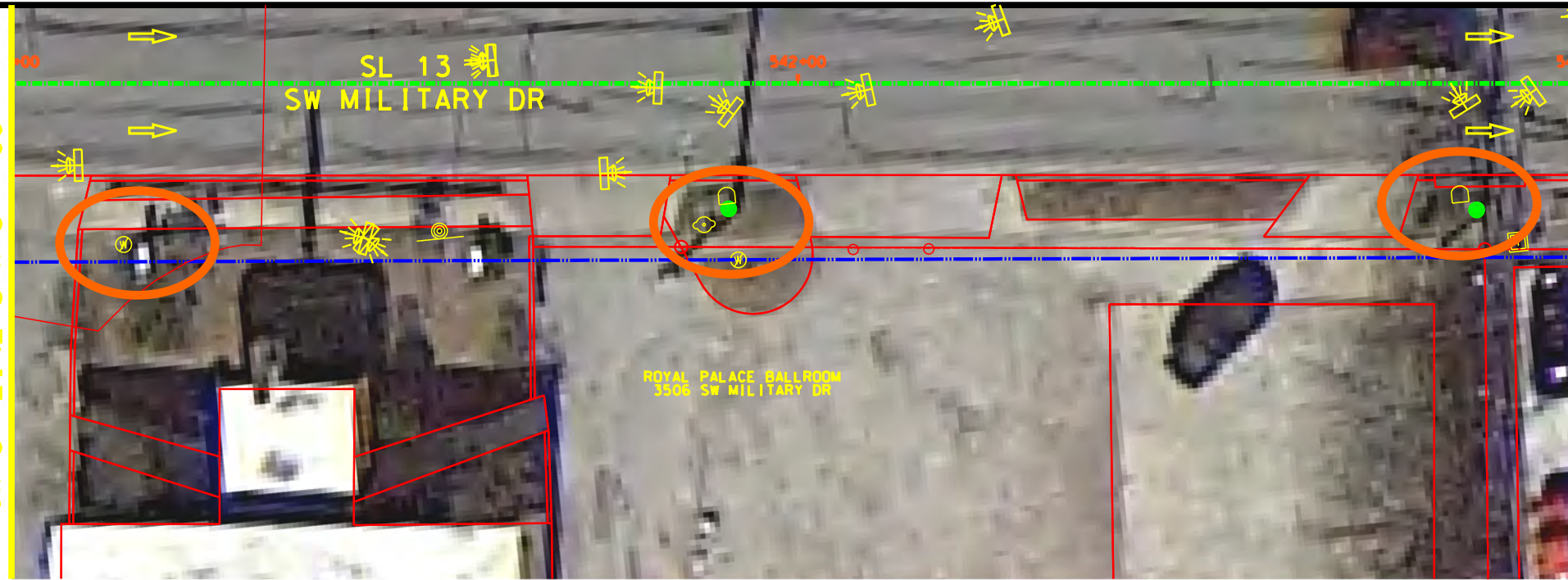
SL 13  
 SW MILITARY B  
**SIDEWALK CONSTRUCTION PLAN**  
 STA 537+00 TO STA 541+00

SHEET 10 OF 45

CDM	FED. NO.	STATE	FEDERAL AID PROJECT NO.	HIGHWAY NO.
CDM	6	TEXAS		VARIABLES
CDM	DIST.	COUNTY	CONT. NO.	SECT. NO.
CDM	SAT	BEXAR	0915	12
CDM				JOB NO.
CDM				574
CDM				SHEET NO.
CDM				99

Plotted on 7/16/2018

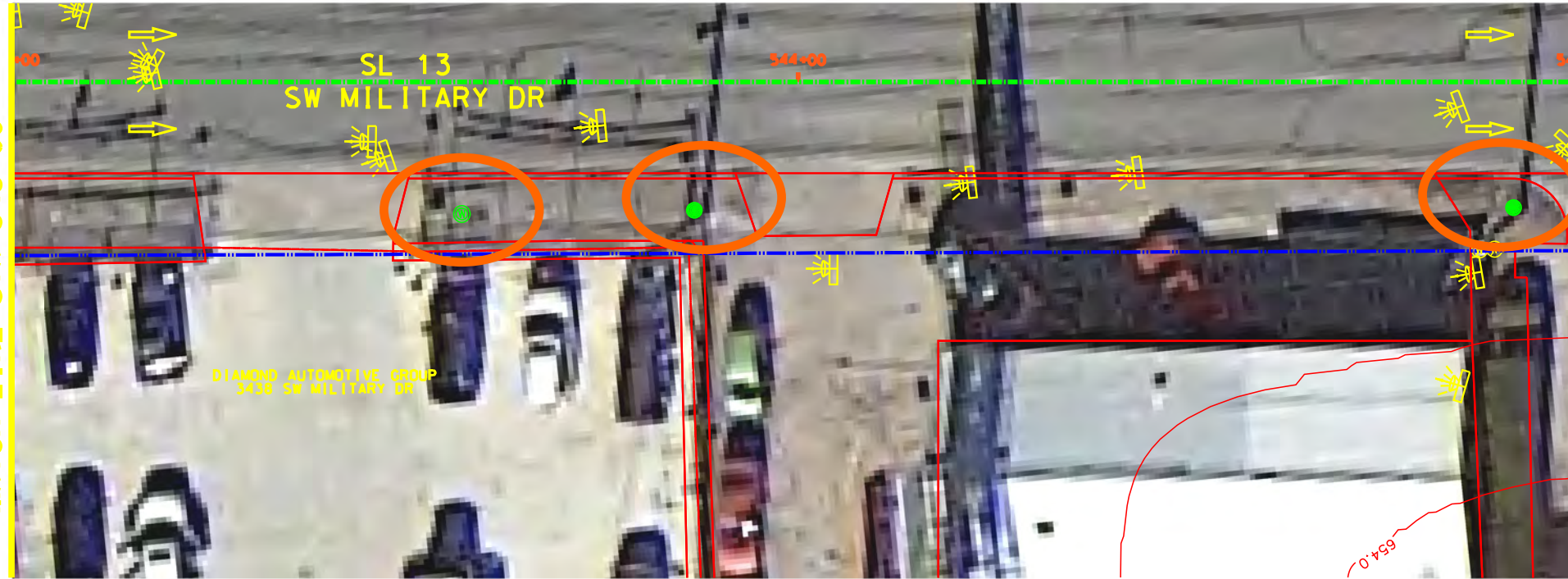
MATCH LINE STA 541+00



MATCH LINE STA 543+00



MATCH LINE STA 543+00



MATCH LINE STA 545+00



NOTES:

- \* FOR CONTRACTOR INFORMATION ONLY
- 1. THE EXISTENCE AND LOCATION OF ALL UTILITIES AND DRAINAGE STRUCTURES INDICATED IN THE PLANS ARE TAKEN FROM THE BEST RECORDS AVAILABLE AND ARE NOT GUARANTEED TO BE ACCURATE. CONTRACTOR SHALL COORDINATE WITH ALL UTILITY COMPANIES TO FIELD VERIFY UTILITIES PRIOR TO BEGINNING CONSTRUCTION.
- 2. REFER TO GUIDE SHEET 111360r-sample17 LEGEND OF SYMBOLS, SLOPES, AND POINT TABLE INFORMATION

DESIGN

**INTERIM REVIEW**  
 DOCUMENT INCOMPLETE. NOT INTENDED FOR PERMIT, BIDDING OR CONSTRUCTION.  
 ENGINEER: JOHN A. TYLER  
 P.E. SERIAL NO: 105193  
 DATE: 7/16/2018

REVIEW AND APPROVAL

**INTERIM REVIEW**  
 DOCUMENT INCOMPLETE. NOT INTENDED FOR PERMIT, BIDDING OR CONSTRUCTION.  
 ENGINEER: JAMES A. LUTZ  
 P.E. SERIAL NO: 84722  
 DATE: 7/16/2018

SCALE: PLAN 1" = 20'

REV. NO.	DATE	DESCRIPTION	BY



SAN ANTONIO | AUSTIN | HOUSTON | FORT WORTH | DALLAS  
 2000 NW LOOP 410 | SAN ANTONIO, TX 78213 | 210.375.9000  
 TBPE FIRM REGISTRATION #470 | TBPLS FIRM REGISTRATION #10028800



SL 13  
 SW MILITARY B  
 SIDEWALK  
 CONSTRUCTION PLAN  
 STA 541+00 TO STA 545+00

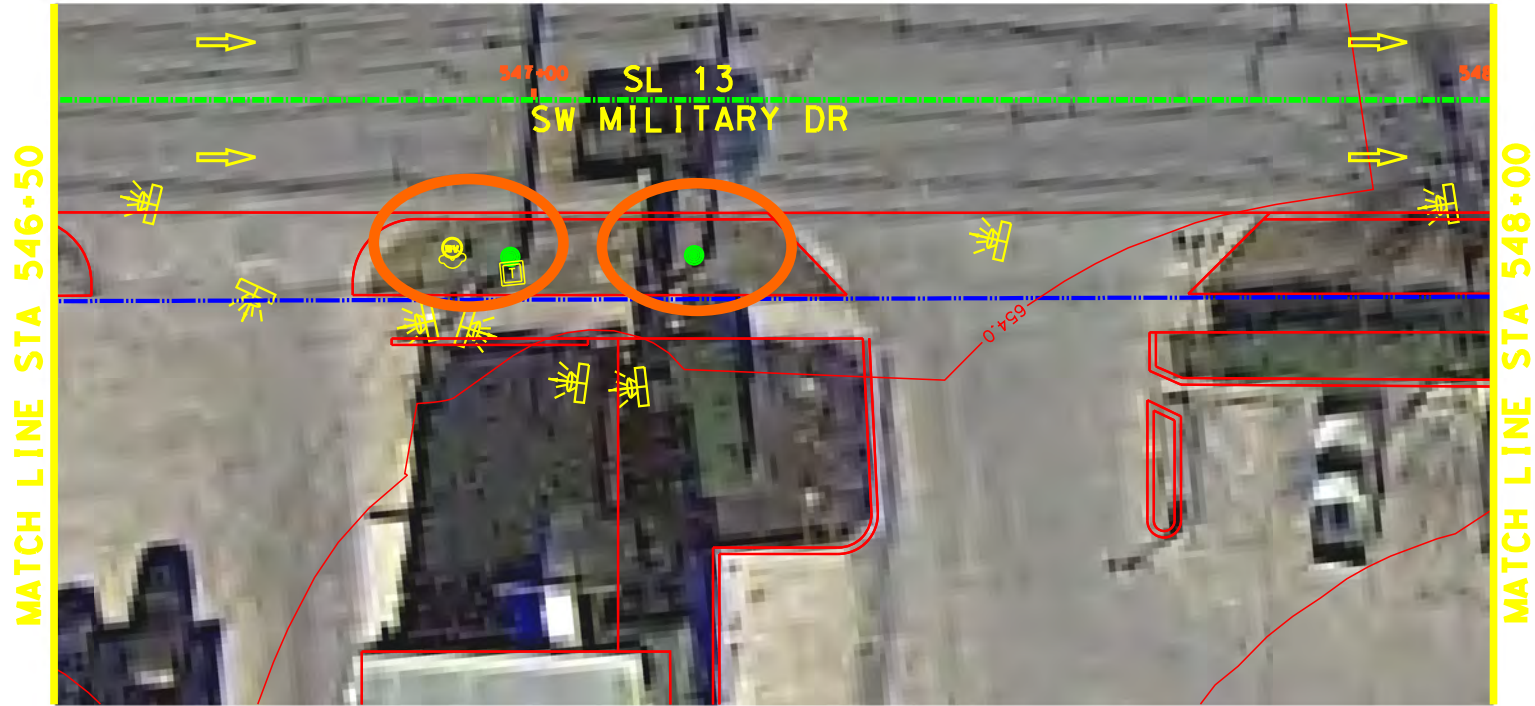
SHEET 11 OF 45

DDM	FED. DIST. NO.	STATE	FEDERAL AID PROJECT NO.	HIGHWAY NO.	
	6	TEXAS		VARIES	
DIST.	COUNTY	CONT. NO.	SECT. NO.	JOB NO.	SHEET NO.
SAT	BEXAR	0915	12	574	100

Design File name: P:\111135\07\design\City\Roadway\Small\11113507\Small\11113507\07-11.dgn

Plotted on 7/16/2018

Design File: P:\111135\07\design\City\Roadway\Small\11113507\Small\11113507\07\07B12.dgn



- NOTES:
- \* FOR CONTRACTOR INFORMATION ONLY
  - 1. THE EXISTENCE AND LOCATION OF ALL UTILITIES AND DRAINAGE STRUCTURES INDICATED IN THE PLANS ARE TAKEN FROM THE BEST RECORDS AVAILABLE AND ARE NOT GUARANTEED TO BE ACCURATE. CONTRACTOR SHALL COORDINATE WITH ALL UTILITY COMPANIES TO FIELD VERIFY UTILITIES PRIOR TO BEGINNING CONSTRUCTION.
  - 2. REFER TO GUIDE SHEET 1113507sample17 LEGEND OF SYMBOLS, SLOPES, AND POINT TABLE INFORMATION

DESIGN  
**INTERIM REVIEW**  
 DOCUMENT INCOMPLETE. NOT INTENDED FOR PERMIT, BIDDING OR CONSTRUCTION.  
 ENGINEER: JOHN A. TYLER  
 P.E. SERIAL NO: 105193  
 DATE: 7/16/2018

REVIEW AND APPROVAL  
**INTERIM REVIEW**  
 DOCUMENT INCOMPLETE. NOT INTENDED FOR PERMIT, BIDDING OR CONSTRUCTION.  
 ENGINEER: JAMES A. LUTZ  
 P.E. SERIAL NO: 84722  
 DATE: 7/16/2018

SCALE: PLAN 1" = 20'

REV. NO.	DATE	DESCRIPTION	BY

**Pape-Dawson ENGINEERS**

SAN ANTONIO | AUSTIN | HOUSTON | FORT WORTH | DALLAS  
 2000 NW LOOP 410 | SAN ANTONIO, TX 78213 | 210.375.9000  
 TBPE FIRM REGISTRATION #470 | TBPLS FIRM REGISTRATION #10028800

Texas Department of Transportation  
 © 2018

SL 13  
 SW MILITARY B  
 SIDEWALK  
 CONSTRUCTION PLAN  
 STA 545+00 TO STA 548+00

SHEET 12 OF 45

DDM	FED. DIST. NO.	STATE	FEDERAL AID PROJECT NO.	HIGHWAY NO.		
	6	TEXAS		VARIABLES		
DDM	DIST.	COUNTY	CONT. NO.	SECT. NO.	JOB NO.	SHEET NO.
	SAT	BEXAR	0915	12	574	101

Plotted on 7/16/2018

Design File: P:\111135\07\design\City\Roadway\Small\1113507\Small\1113507\13.dgn



- NOTES:
- \* FOR CONTRACTOR INFORMATION ONLY
  - 1. THE EXISTENCE AND LOCATION OF ALL UTILITIES AND DRAINAGE STRUCTURES INDICATED IN THE PLANS ARE TAKEN FROM THE BEST RECORDS AVAILABLE AND ARE NOT GUARANTEED TO BE ACCURATE. CONTRACTOR SHALL COORDINATE WITH ALL UTILITY COMPANIES TO FIELD VERIFY UTILITIES PRIOR TO BEGINNING CONSTRUCTION.
  - 2. REFER TO GUIDE SHEET 1113507sample17 LEGEND OF SYMBOLS, SLOPES, AND POINT TABLE INFORMATION

**DESIGN**

**INTERIM REVIEW**

DOCUMENT INCOMPLETE. NOT INTENDED FOR PERMIT, BIDDING OR CONSTRUCTION.  
 ENGINEER: JOHN A. TYLER  
 P.E. SERIAL NO: 105193  
 DATE: 7/16/2018

**REVIEW AND APPROVAL**

**INTERIM REVIEW**

DOCUMENT INCOMPLETE. NOT INTENDED FOR PERMIT, BIDDING OR CONSTRUCTION.  
 ENGINEER: JAMES A. LUTZ  
 P.E. SERIAL NO: 84722  
 DATE: 7/16/2018

SCALE: PLAN 1" = 20'

REV. NO.	DATE	DESCRIPTION	BY

**Pape-Dawson ENGINEERS**

SAN ANTONIO | AUSTIN | HOUSTON | FORT WORTH | DALLAS  
 2000 NW LOOP 410 | SAN ANTONIO, TX 78213 | 210.375.9000  
TBPE FIRM REGISTRATION #470 | TBPLS FIRM REGISTRATION #10028800



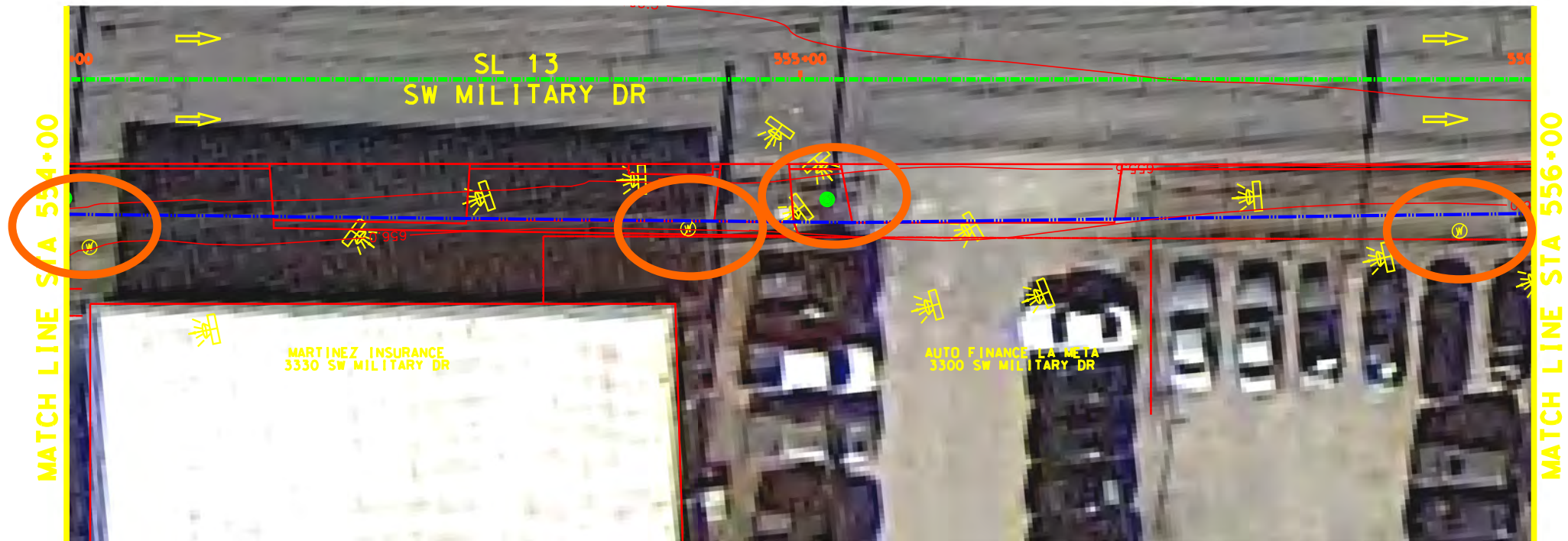
SL 13  
 SW MILITARY B  
**SIDEWALK  
 CONSTRUCTION PLAN**  
 STA 548+00 TO STA 552+00

SHEET 13 OF 45

DDM	FED. NO.	STATE	FEDERAL AID PROJECT NO.	HIGHWAY NO.
DDM	6	TEXAS		VARIABLE
DWG	DIST.	COUNTY	CONT. NO.	SECT. NO.
DWG	SAT	BEXAR	0915	12
DWG				JOB NO.
DWG				574
DWG				SHEET NO.
DWG				102

Plotted on 7/16/2018

Design File: P:\111135\07\design\City\Roadway\Small\11113507\Small\11113507\07\07B14.dgn



NOTES:

- \* FOR CONTRACTOR INFORMATION ONLY
- 1. THE EXISTENCE AND LOCATION OF ALL UTILITIES AND DRAINAGE STRUCTURES INDICATED IN THE PLANS ARE TAKEN FROM THE BEST RECORDS AVAILABLE AND ARE NOT GUARANTEED TO BE ACCURATE. CONTRACTOR SHALL COORDINATE WITH ALL UTILITY COMPANIES TO FIELD VERIFY UTILITIES PRIOR TO BEGINNING CONSTRUCTION.
- 2. REFER TO GUIDE SHEET 1113507sample17 LEGEND OF SYMBOLS, SLOPES, AND POINT TABLE INFORMATION

DESIGN

**INTERIM REVIEW**  
 DOCUMENT INCOMPLETE. NOT INTENDED FOR PERMIT, BIDDING OR CONSTRUCTION.  
 ENGINEER: JOHN A. TYLER  
 P.E. SERIAL NO: 105193  
 DATE: 7/16/2018

REVIEW AND APPROVAL

**INTERIM REVIEW**  
 DOCUMENT INCOMPLETE. NOT INTENDED FOR PERMIT, BIDDING OR CONSTRUCTION.  
 ENGINEER: JAMES A. LUTZ  
 P.E. SERIAL NO: 84722  
 DATE: 7/16/2018

SCALE: PLAN 1" = 20'

REV. NO.	DATE	DESCRIPTION	BY



SAN ANTONIO | AUSTIN | HOUSTON | FORT WORTH | DALLAS  
 2000 NW LOOP 410 | SAN ANTONIO, TX 78213 | 210.375.9000  
 TBPE FIRM REGISTRATION #470 | TBPLS FIRM REGISTRATION #10028800



SL 13  
 SW MILITARY B  
 SIDEWALK  
 CONSTRUCTION PLAN  
 STA 552+00 TO STA 556+00

SHEET 14 OF 45

DDM	FED. DIST. NO.	STATE	FEDERAL AID PROJECT NO.	HIGHWAY NO.		
	6	TEXAS		VARIES		
DDM	DIST.	COUNTY	CONT. NO.	SECT. NO.	JOB NO.	SHEET NO.
	SAT	BEXAR	0915	12	574	103

Plotted on 7/16/2018

Design File: P:\111135\07\design\City\Roadway\Small\11113507\Small\11113507\15.dgn



- NOTES:
- \* FOR CONTRACTOR INFORMATION ONLY
  - 1. THE EXISTENCE AND LOCATION OF ALL UTILITIES AND DRAINAGE STRUCTURES INDICATED IN THE PLANS ARE TAKEN FROM THE BEST RECORDS AVAILABLE AND ARE NOT GUARANTEED TO BE ACCURATE. CONTRACTOR SHALL COORDINATE WITH ALL UTILITY COMPANIES TO FIELD VERIFY UTILITIES PRIOR TO BEGINNING CONSTRUCTION.
  - 2. REFER TO GUIDE SHEET 1113507sample17 LEGEND OF SYMBOLS, SLOPES, AND POINT TABLE INFORMATION

DESIGN  
**INTERIM REVIEW**  
 DOCUMENT INCOMPLETE. NOT INTENDED FOR PERMIT, BIDDING OR CONSTRUCTION.  
 ENGINEER: JOHN A. TYLER  
 P.E. SERIAL NO: 105193  
 DATE: 7/16/2018

REVIEW AND APPROVAL  
**INTERIM REVIEW**  
 DOCUMENT INCOMPLETE. NOT INTENDED FOR PERMIT, BIDDING OR CONSTRUCTION.  
 ENGINEER: JAMES A. LUTZ  
 P.E. SERIAL NO: 84722  
 DATE: 7/16/2018

SCALE: PLAN 1" = 20'

REV. NO.	DATE	DESCRIPTION	BY

**Pape-Dawson ENGINEERS**  
 SAN ANTONIO | AUSTIN | HOUSTON | FORT WORTH | DALLAS  
 2000 NW LOOP 410 | SAN ANTONIO, TX 78213 | 210.375.9000  
 TBPE FIRM REGISTRATION #470 | TBPLS FIRM REGISTRATION #10028800

Texas Department of Transportation  
 © 2018

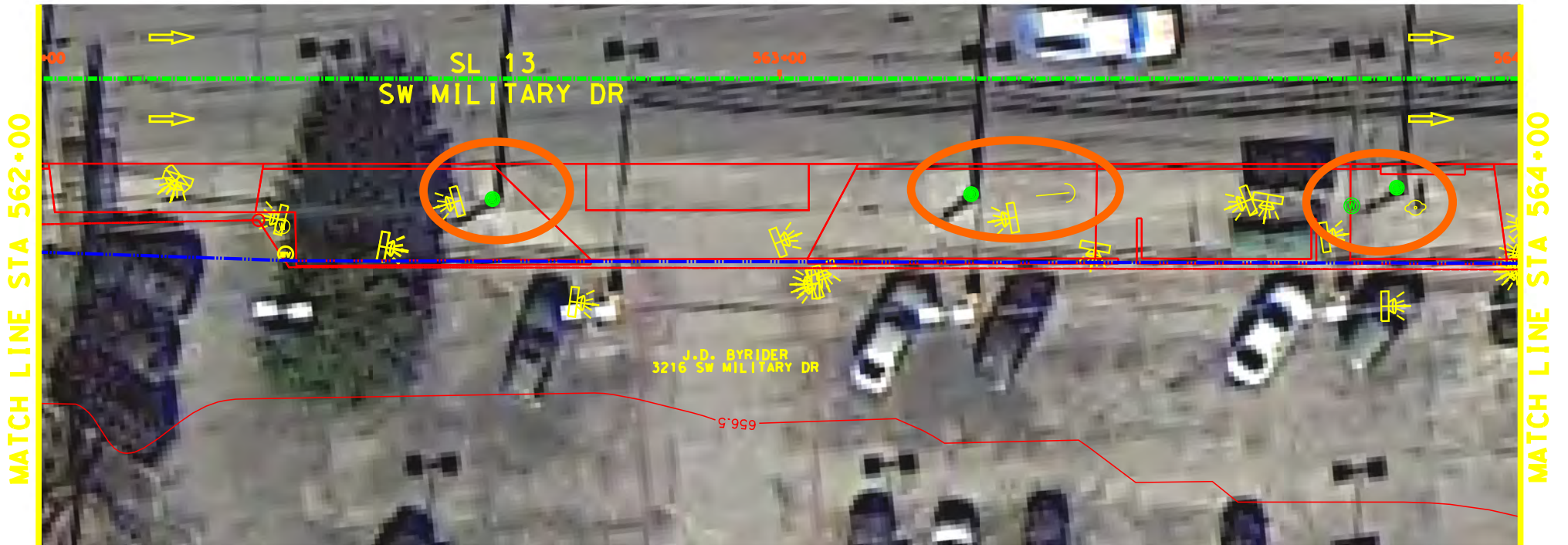
SL 13  
 SW MILITARY B  
**SIDEWALK CONSTRUCTION PLAN**  
 STA 556+00 TO STA 560+00

SHEET 15 OF 45

DDM	FED. DIST. NO.	STATE	FEDERAL AID PROJECT NO.	HIGHWAY NO.		
	6	TEXAS		VARIES		
DDM	DIST.	COUNTY	CONT. NO.	SECT. NO.	JOB NO.	SHEET NO.
	SAT	BEXAR	0915	12	574	104

Plotted on 7/16/2018

Design File: P:\111135\07\design\City\Roadway\Small\11113507\Small\11113507\07\07B16.dgn



- NOTES:
- \* FOR CONTRACTOR INFORMATION ONLY
  - 1. THE EXISTENCE AND LOCATION OF ALL UTILITIES AND DRAINAGE STRUCTURES INDICATED IN THE PLANS ARE TAKEN FROM THE BEST RECORDS AVAILABLE AND ARE NOT GUARANTEED TO BE ACCURATE. CONTRACTOR SHALL COORDINATE WITH ALL UTILITY COMPANIES TO FIELD VERIFY UTILITIES PRIOR TO BEGINNING CONSTRUCTION.
  - 2. REFER TO GUIDE SHEET 1113507sample17 LEGEND OF SYMBOLS, SLOPES, AND POINT TABLE INFORMATION

**DESIGN**

**INTERIM REVIEW**

DOCUMENT INCOMPLETE. NOT INTENDED FOR PERMIT, BIDDING OR CONSTRUCTION.  
 ENGINEER: JOHN A. TYLER  
 P.E. SERIAL NO: 105193  
 DATE: 7/16/2018

**REVIEW AND APPROVAL**

**INTERIM REVIEW**

DOCUMENT INCOMPLETE. NOT INTENDED FOR PERMIT, BIDDING OR CONSTRUCTION.  
 ENGINEER: JAMES A. LUTZ  
 P.E. SERIAL NO: 84722  
 DATE: 7/16/2018

SCALE: PLAN 1" = 20'

REV. NO.	DATE	DESCRIPTION	BY

**Pape-Dawson Engineers**

SAN ANTONIO | AUSTIN | HOUSTON | FORT WORTH | DALLAS  
 2000 NW LOOP 410 | SAN ANTONIO, TX 78213 | 210.375.9000  
 TBPE FIRM REGISTRATION #470 | TBPLS FIRM REGISTRATION #10028800



SL 13  
 SW MILITARY B  
**SIDEWALK  
 CONSTRUCTION PLAN**  
 STA 560+00 TO STA 564+00

SHEET 16 OF 45

DDM	FED. DIST. NO.	STATE	FEDERAL AID PROJECT NO.	HIGHWAY NO.		
	6	TEXAS		VARIES		
DDM	DIST.	COUNTY	CONT. NO.	SECT. NO.	JOB NO.	SHEET NO.
	SAT	BEXAR	0915	12	574	105



Plotted on 7/16/2018

Design File: P:\111135\07\design\City\Roadway\Small\11113507\Small\11113507.dgn



- NOTES:
- \* FOR CONTRACTOR INFORMATION ONLY
  - 1. THE EXISTENCE AND LOCATION OF ALL UTILITIES AND DRAINAGE STRUCTURES INDICATED IN THE PLANS ARE TAKEN FROM THE BEST RECORDS AVAILABLE AND ARE NOT GUARANTEED TO BE ACCURATE. CONTRACTOR SHALL COORDINATE WITH ALL UTILITY COMPANIES TO FIELD VERIFY UTILITIES PRIOR TO BEGINNING CONSTRUCTION.
  - 2. REFER TO GUIDE SHEET 1113507-sample17 LEGEND OF SYMBOLS, SLOPES, AND POINT TABLE INFORMATION

**DESIGN**

**INTERIM REVIEW**

DOCUMENT INCOMPLETE. NOT INTENDED FOR PERMIT. BIDDING OR CONSTRUCTION.  
 ENGINEER: JOHN A. TYLER  
 P.E. SERIAL NO: 105193  
 DATE: 7/16/2018

**REVIEW AND APPROVAL**

**INTERIM REVIEW**

DOCUMENT INCOMPLETE. NOT INTENDED FOR PERMIT. BIDDING OR CONSTRUCTION.  
 ENGINEER: JAMES A. LUTZ  
 P.E. SERIAL NO: 84722  
 DATE: 7/16/2018

SCALE: PLAN 1" = 20'

REV. NO.	DATE	DESCRIPTION	BY

**Pape-Dawson ENGINEERS**

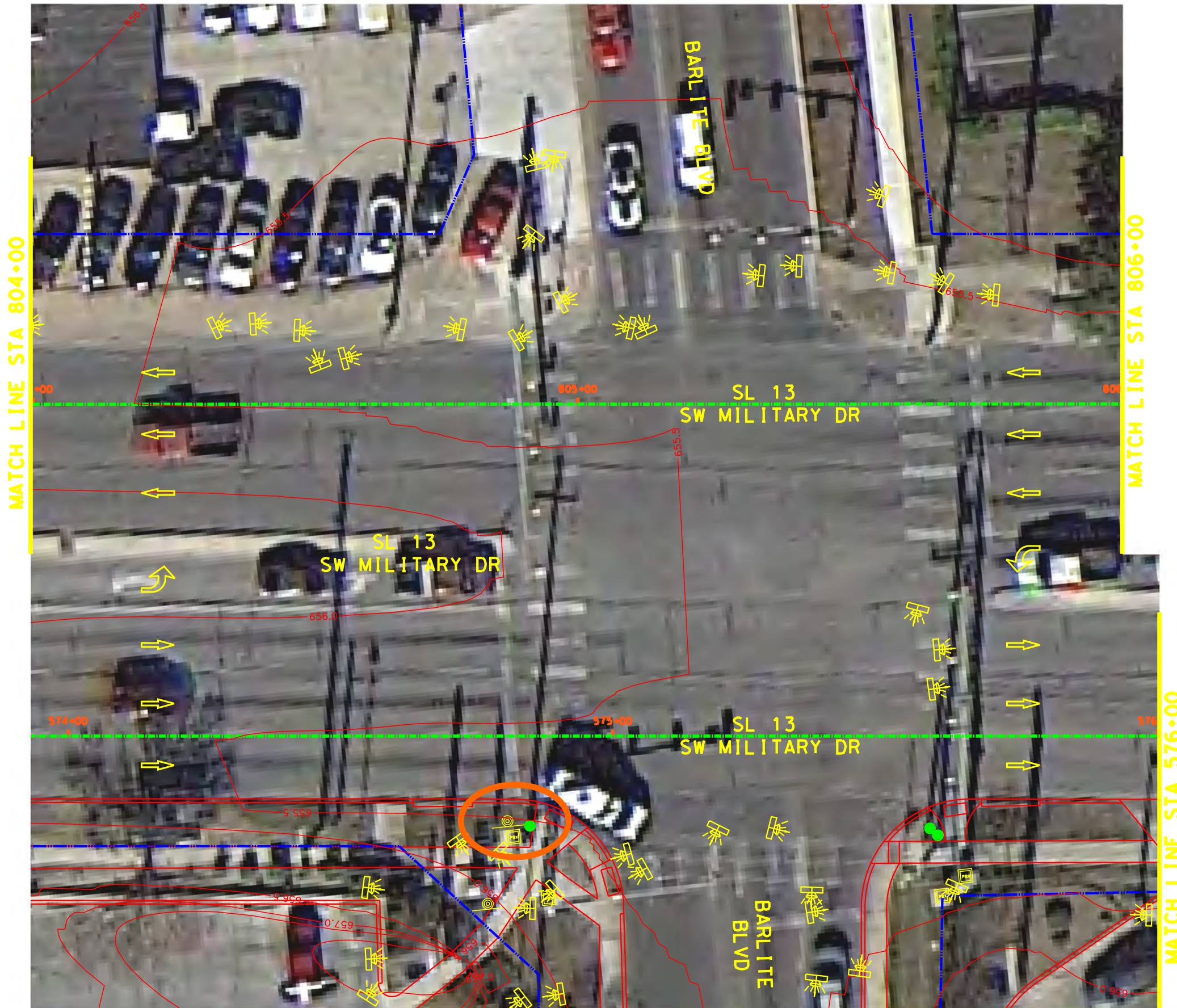
SAN ANTONIO | AUSTIN | HOUSTON | FORT WORTH | DALLAS  
 2000 NW LOOP 410 | SAN ANTONIO, TX 78213 | 210.375.9000  
 TBPE FIRM REGISTRATION #470 | TBPLS FIRM REGISTRATION #10028800

**Texas Department of Transportation**  
 © 2018

SL 13  
 SW MILITARY B  
**SIDEWALK  
 CONSTRUCTION PLAN**  
 STA 564+00 TO STA 566+00

SHEET 17 OF 45

DDM	FED. DIV. NO.	STATE	FEDERAL AID PROJECT NO.	HIGHWAY NO.		
	6	TEXAS		VARIES		
DDM	DIST.	COUNTY	CONT. NO.	SECT. NO.	JOB NO.	SHEET NO.
	SAT	BEXAR	0915	12	574	106



- NOTES:
- \* FOR CONTRACTOR INFORMATION ONLY
  - 1. THE EXISTENCE AND LOCATION OF ALL UTILITIES AND DRAINAGE STRUCTURES INDICATED IN THE PLANS ARE TAKEN FROM THE BEST RECORDS AVAILABLE AND ARE NOT GUARANTEED TO BE ACCURATE. CONTRACTOR SHALL COORDINATE WITH ALL UTILITY COMPANIES TO FIELD VERIFY UTILITIES PRIOR TO BEGINNING CONSTRUCTION.
  - 2. REFER TO GUIDE SHEET 1113507-sample17 LEGEND OF SYMBOLS, SLOPES, AND POINT TABLE INFORMATION

DESIGN  
**INTERIM REVIEW**  
 DOCUMENT INCOMPLETE. NOT INTENDED FOR PERMIT, BIDDING OR CONSTRUCTION.  
 ENGINEER: JOHN A. TYLER  
 P.E. SERIAL NO: 105193  
 DATE: 7/16/2018

REVIEW AND APPROVAL  
**INTERIM REVIEW**  
 DOCUMENT INCOMPLETE. NOT INTENDED FOR PERMIT, BIDDING OR CONSTRUCTION.  
 ENGINEER: JAMES A. LUTZ  
 P.E. SERIAL NO: 84722  
 DATE: 7/16/2018

SCALE: PLAN 1" = 20'

REV. NO.	DATE	DESCRIPTION	BY

**Pape-Dawson Engineers**  
 SAN ANTONIO | AUSTIN | HOUSTON | FORT WORTH | DALLAS  
 2000 NW LOOP 410 | SAN ANTONIO, TX 78213 | 210.375.9000  
 TBPE FIRM REGISTRATION #470 | TBPLS FIRM REGISTRATION #10028800

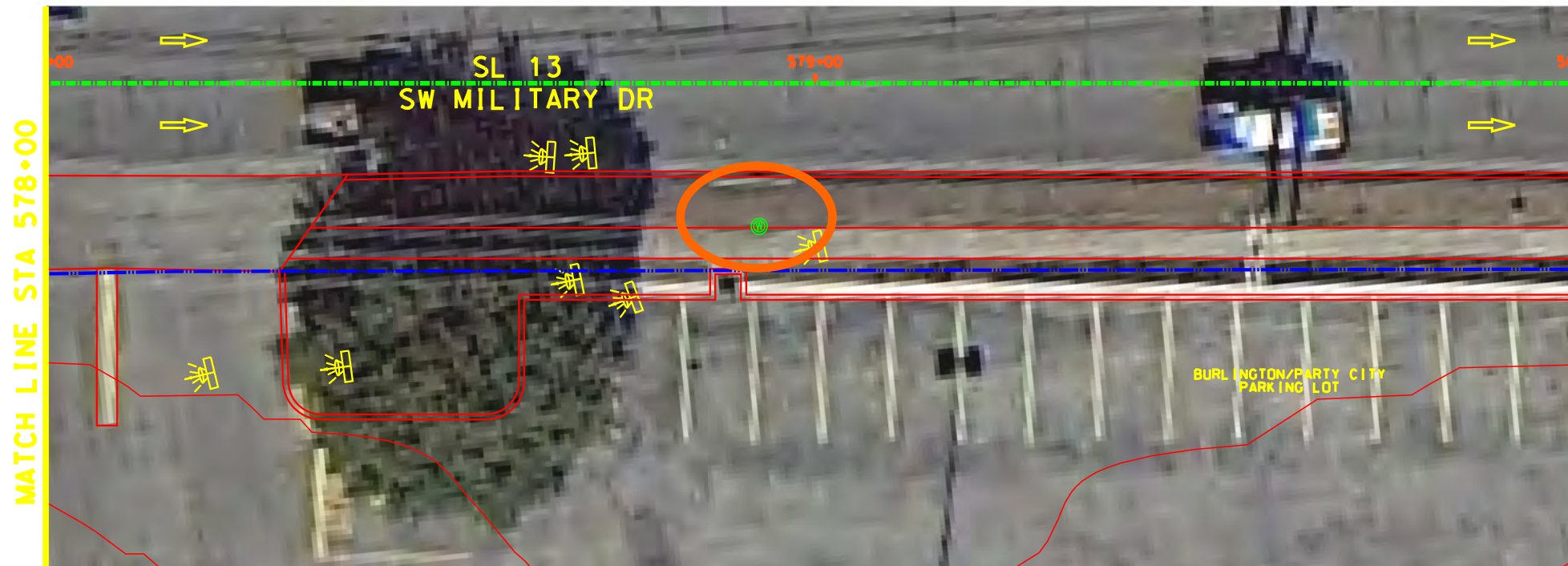
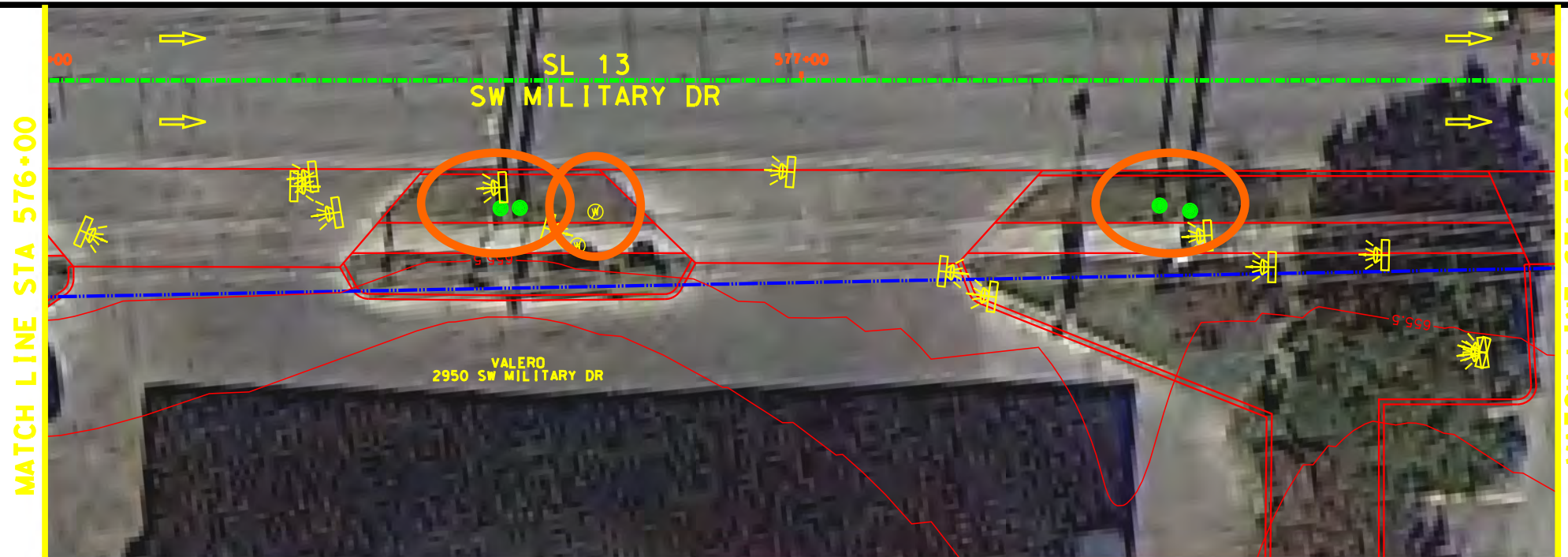
Texas Department of Transportation  
 © 2018

SL 13  
 SW MILITARY B  
**SIDEWALK CONSTRUCTION PLAN**  
 STA 574+00 TO STA 576+00  
 STA 804+00 TO STA 806+00  
 SHEET 18 OF 45

DDM	REV. NO.	STATE	FEDERAL AID PROJECT NO.	HIGHWAY NO.		
	6	TEXAS		VARIES		
DDM	DIST.	COUNTY	CONT. NO.	SECT. NO.	JOB NO.	SHEET NO.
	SAT	BEXAR	0915	12	574	107

Plotted on 7/16/2018

Design File: P:\111135\07\design\City\Roadway\Small\11113507\Small\11113507\07\07B19.dgn



- NOTES:
- \* FOR CONTRACTOR INFORMATION ONLY
  - 1. THE EXISTENCE AND LOCATION OF ALL UTILITIES AND DRAINAGE STRUCTURES INDICATED IN THE PLANS ARE TAKEN FROM THE BEST RECORDS AVAILABLE AND ARE NOT GUARANTEED TO BE ACCURATE. CONTRACTOR SHALL COORDINATE WITH ALL UTILITY COMPANIES TO FIELD VERIFY UTILITIES PRIOR TO BEGINNING CONSTRUCTION.
  - 2. REFER TO GUIDE SHEET 1113507-sample17 LEGEND OF SYMBOLS, SLOPES, AND POINT TABLE INFORMATION

DESIGN  
**INTERIM REVIEW**  
 DOCUMENT INCOMPLETE. NOT INTENDED FOR PERMIT, BIDDING OR CONSTRUCTION.  
 ENGINEER: JOHN A. TYLER  
 P.E. SERIAL NO: 105193  
 DATE: 7/16/2018

REVIEW AND APPROVAL  
**INTERIM REVIEW**  
 DOCUMENT INCOMPLETE. NOT INTENDED FOR PERMIT, BIDDING OR CONSTRUCTION.  
 ENGINEER: JAMES A. LUTZ  
 P.E. SERIAL NO: 84722  
 DATE: 7/16/2018

SCALE: PLAN 1" = 20'

REV. NO.	DATE	DESCRIPTION	BY

**Pape-Dawson Engineers**  
 SAN ANTONIO | AUSTIN | HOUSTON | FORT WORTH | DALLAS  
 2000 NW LOOP 410 | SAN ANTONIO, TX 78213 | 210.375.9000  
 TBPE FIRM REGISTRATION #470 | TBPLS FIRM REGISTRATION #10028800

Texas Department of Transportation  
 © 2018

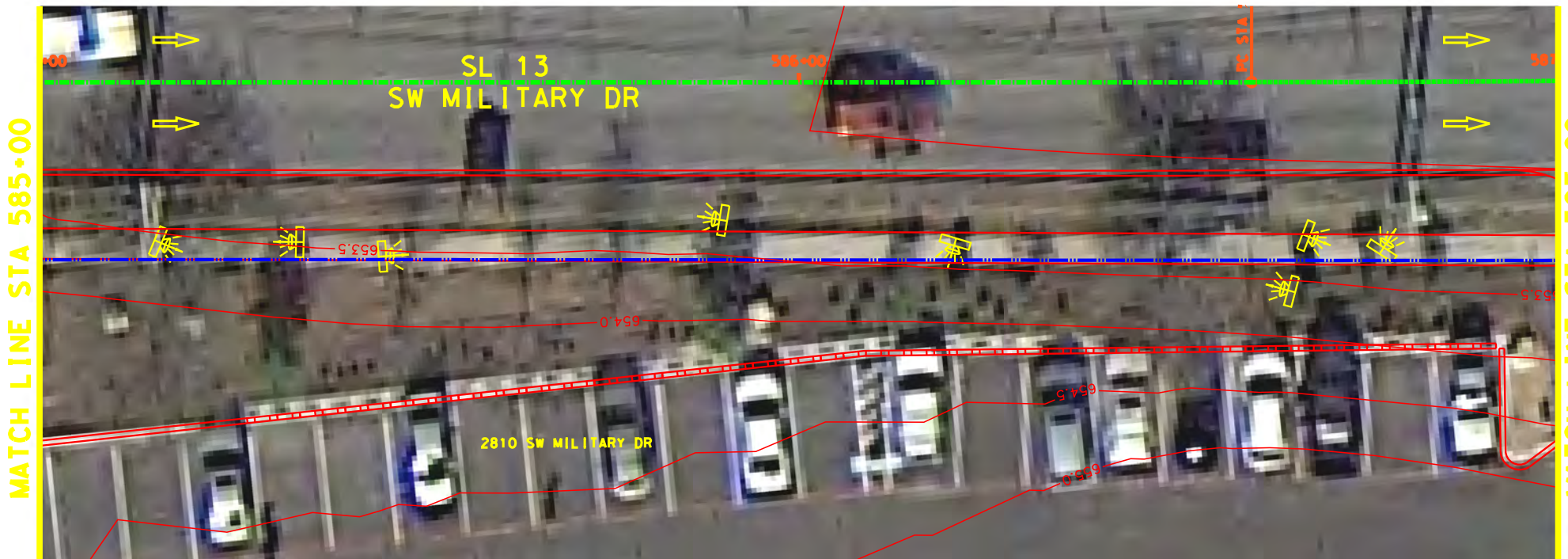
SL 13  
 SW MILITARY B  
 SIDEWALK  
 CONSTRUCTION PLAN  
 STA 576+00 TO STA 580+00

SHEET 19 OF 45

DDM	FED. DIST. NO.	STATE	FEDERAL AID PROJECT NO.	HIGHWAY NO.		
	6	TEXAS		VARIES		
DDM	DIST.	COUNTY	CONT. NO.	SECT. NO.	JOB NO.	SHEET NO.
	SAT	BEXAR	0915	12	574	108

Plotted on 7/16/2018

Design File: P:\111135\07\design\City\Roadway\Small\11113507\Small\11113507.dgn



- NOTES:
- \* FOR CONTRACTOR INFORMATION ONLY
  - 1. THE EXISTENCE AND LOCATION OF ALL UTILITIES AND DRAINAGE STRUCTURES INDICATED IN THE PLANS ARE TAKEN FROM THE BEST RECORDS AVAILABLE AND ARE NOT GUARANTEED TO BE ACCURATE. CONTRACTOR SHALL COORDINATE WITH ALL UTILITY COMPANIES TO FIELD VERIFY UTILITIES PRIOR TO BEGINNING CONSTRUCTION.
  - 2. REFER TO GUIDE SHEET 1113507sample17 LEGEND OF SYMBOLS, SLOPES, AND POINT TABLE INFORMATION

DESIGN  
**INTERIM REVIEW**  
 DOCUMENT INCOMPLETE. NOT INTENDED FOR PERMIT, BIDDING OR CONSTRUCTION.  
 ENGINEER: JOHN A. TYLER  
 P.E. SERIAL NO: 105193  
 DATE: 7/16/2018

REVIEW AND APPROVAL  
**INTERIM REVIEW**  
 DOCUMENT INCOMPLETE. NOT INTENDED FOR PERMIT, BIDDING OR CONSTRUCTION.  
 ENGINEER: JAMES A. LUTZ  
 P.E. SERIAL NO: 84722  
 DATE: 7/16/2018

SCALE: PLAN 1" = 20'

REV. NO.	DATE	DESCRIPTION	BY

**Pape-Dawson Engineers**  
 SAN ANTONIO | AUSTIN | HOUSTON | FORT WORTH | DALLAS  
 2000 NW LOOP 410 | SAN ANTONIO, TX 78213 | 210.375.9000  
 TBPE FIRM REGISTRATION #470 | TBPLS FIRM REGISTRATION #10028800

Texas Department of Transportation  
 © 2018

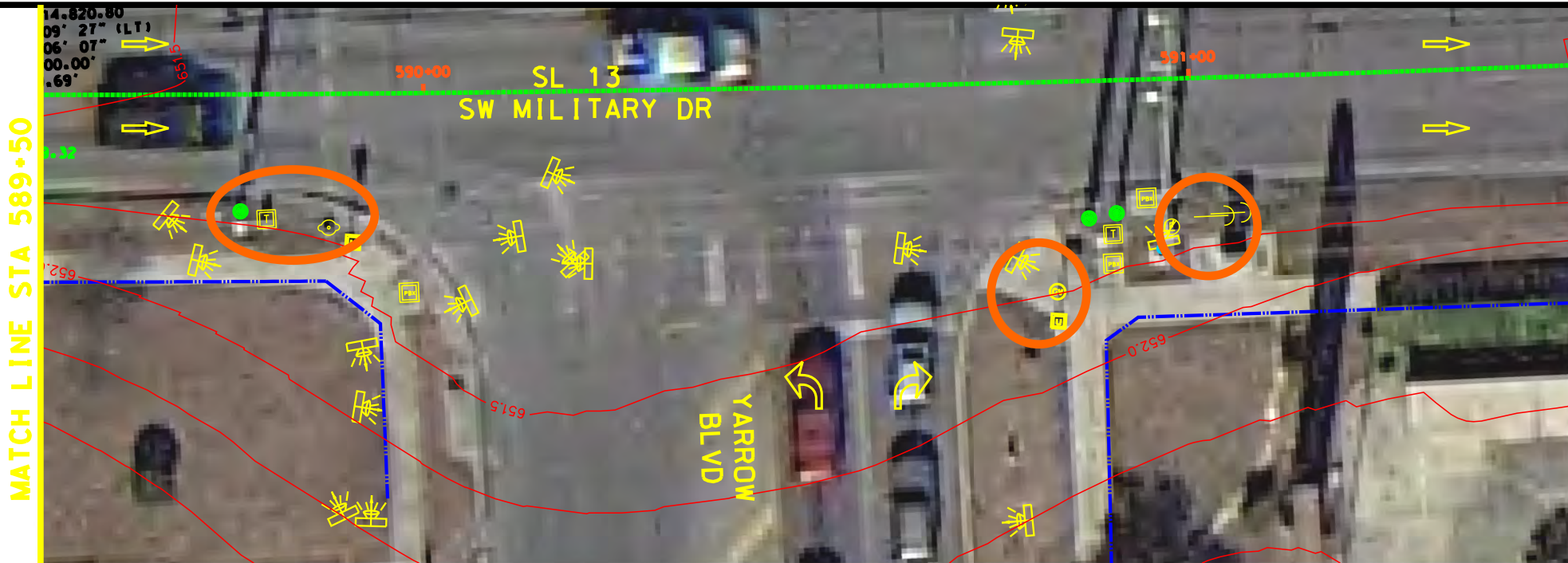
SL 13  
 SW MILITARY B  
**SIDEWALK CONSTRUCTION PLAN**  
 STA 583+00 TO STA 587+00

SHEET 20 OF 45

DDM	FED. DIST. NO.	STATE	FEDERAL AID PROJECT NO.	HIGHWAY NO.		
	6	TEXAS		VARIES		
DDM	DIST.	COUNTY	CONT. NO.	SECT. NO.	JOB NO.	SHEET NO.
	SAT	BEXAR	0915	12	574	109

Plotted on 7/16/2018

Design File: P:\111135\07\design\Civil\Roadway\Small\1113507\Small1113507.dgn



**NOTES:**

- \* FOR CONTRACTOR INFORMATION ONLY
- 1. THE EXISTENCE AND LOCATION OF ALL UTILITIES AND DRAINAGE STRUCTURES INDICATED IN THE PLANS ARE TAKEN FROM THE BEST RECORDS AVAILABLE AND ARE NOT GUARANTEED TO BE ACCURATE. CONTRACTOR SHALL COORDINATE WITH ALL UTILITY COMPANIES TO FIELD VERIFY UTILITIES PRIOR TO BEGINNING CONSTRUCTION.
- 2. REFER TO GUIDE SHEET 1113507-sample17 LEGEND OF SYMBOLS, SLOPES, AND POINT TABLE INFORMATION

**DESIGN**

<b>INTERIM REVIEW</b>
DOCUMENT INCOMPLETE. NOT INTENDED FOR PERMIT, BIDDING OR CONSTRUCTION.
ENGINEER: <u>JOHN A. TYLER</u>
P.E. SERIAL NO: <u>105193</u>
DATE: <u>7/16/2018</u>

**REVIEW AND APPROVAL**

<b>INTERIM REVIEW</b>
DOCUMENT INCOMPLETE. NOT INTENDED FOR PERMIT, BIDDING OR CONSTRUCTION.
ENGINEER: <u>JAMES A. LUTZ</u>
P.E. SERIAL NO: <u>84722</u>
DATE: <u>7/16/2018</u>

**SCALE: PLAN 1" = 20'**

REV. NO.	DATE	DESCRIPTION	BY

**PAPE-DAWSON ENGINEERS**

SAN ANTONIO | AUSTIN | HOUSTON | FORT WORTH | DALLAS  
2000 NW LOOP 410 | SAN ANTONIO, TX 78213 | 210.375.9000  
TBPPE FIRM REGISTRATION #470 | TBPPLS FIRM REGISTRATION #10028800

**Texas Department of Transportation**  
© 2018

**SL 13  
SW MILITARY B**

**SIDEWALK  
CONSTRUCTION PLAN**

STA 589+50 TO STA 593+50

**SHEET 21 OF 45**

CDM	FED. NO. / DIV. NO.	STATE	FEDERAL AID PROJECT NO.		HIGHWAY NO.
DWM	6	TEXAS			VARIES
DNG	DIST.	COUNTY	CONT. NO.	SECT. NO.	JOB NO. / SHEET NO.
DNG	SAT	BEXAR	0915	12	574 / 110

Plotted on 7/16/2018

Design File: P:\111135\07\design\City\Roadway\Small\11113507\Small\11113507\07B-22.dgn



- NOTES:
- \* FOR CONTRACTOR INFORMATION ONLY
  - 1. THE EXISTENCE AND LOCATION OF ALL UTILITIES AND DRAINAGE STRUCTURES INDICATED IN THE PLANS ARE TAKEN FROM THE BEST RECORDS AVAILABLE AND ARE NOT GUARANTEED TO BE ACCURATE. CONTRACTOR SHALL COORDINATE WITH ALL UTILITY COMPANIES TO FIELD VERIFY UTILITIES PRIOR TO BEGINNING CONSTRUCTION.
  - 2. REFER TO GUIDE SHEET 1113507-sample17 LEGEND OF SYMBOLS, SLOPES, AND POINT TABLE INFORMATION

**DESIGN**

**INTERIM REVIEW**

DOCUMENT INCOMPLETE. NOT INTENDED FOR PERMIT, BIDDING OR CONSTRUCTION.  
 ENGINEER: JOHN A. TYLER  
 P.E. SERIAL NO: 105193  
 DATE: 7/16/2018

**REVIEW AND APPROVAL**

**INTERIM REVIEW**

DOCUMENT INCOMPLETE. NOT INTENDED FOR PERMIT, BIDDING OR CONSTRUCTION.  
 ENGINEER: JAMES A. LUTZ  
 P.E. SERIAL NO: 84722  
 DATE: 7/16/2018

SCALE: PLAN 1" = 20'

REV. NO.	DATE	DESCRIPTION	BY

**Pape-Dawson ENGINEERS**

SAN ANTONIO | AUSTIN | HOUSTON | FORT WORTH | DALLAS  
 2000 NW LOOP 410 | SAN ANTONIO, TX 78213 | 210.375.9000  
TBPE FIRM REGISTRATION #470 | TBPLS FIRM REGISTRATION #10028800



SL 13  
 SW MILITARY B  
**SIDEWALK  
 CONSTRUCTION PLAN**  
 STA 593+50 TO STA 597+00

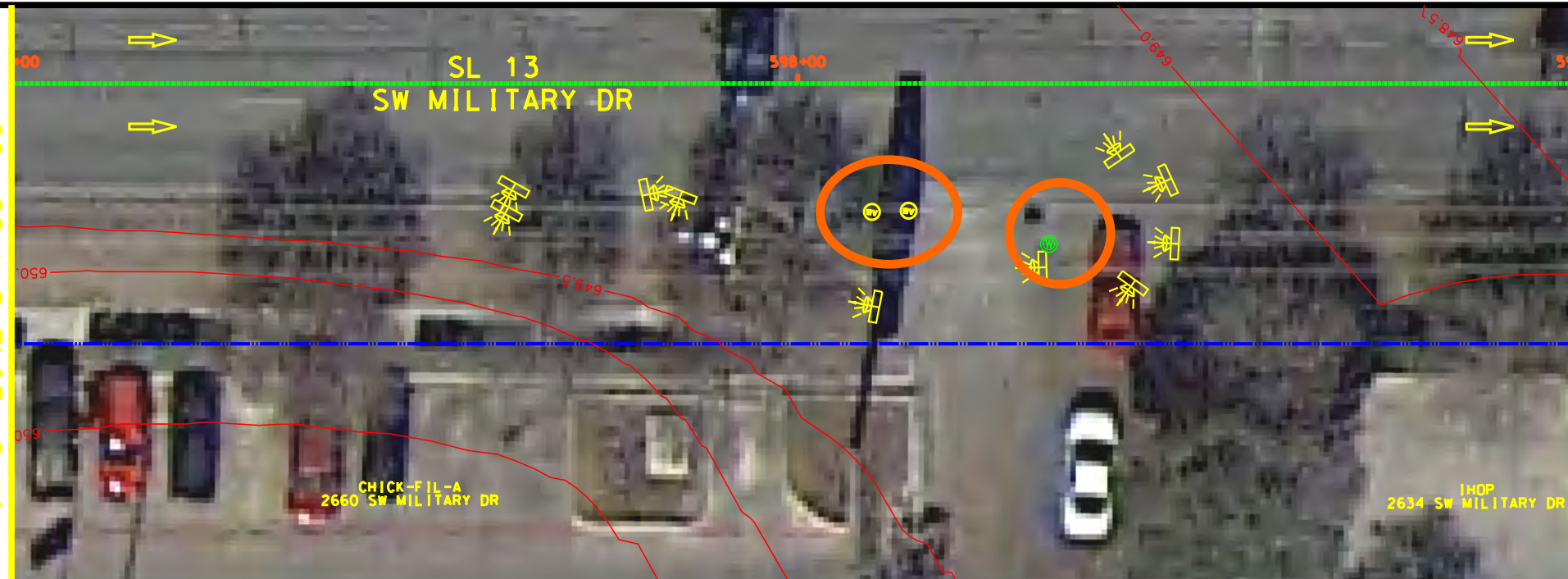
SHEET 22 OF 45

DDM	FED. DIST. NO.	STATE	FEDERAL AID PROJECT NO.	HIGHWAY NO.
	6	TEXAS		VARIES
DDM	DIST.	COUNTY	CONT. NO.	SECT. NO.
	SAT	BEXAR	0915	12
DDM				JOB NO.
				574
DDM				SHEET NO.
				111

Plotted on 7/16/2018

Design File: P:\111135\07\design\City\Roadway\Small\1113507\Small\1113507\07\07B\23.dgn

MATCH LINE STA 597+00



**NOTES:**

- \* FOR CONTRACTOR INFORMATION ONLY
- 1. THE EXISTENCE AND LOCATION OF ALL UTILITIES AND DRAINAGE STRUCTURES INDICATED IN THE PLANS ARE TAKEN FROM THE BEST RECORDS AVAILABLE AND ARE NOT GUARANTEED TO BE ACCURATE. CONTRACTOR SHALL COORDINATE WITH ALL UTILITY COMPANIES TO FIELD VERIFY UTILITIES PRIOR TO BEGINNING CONSTRUCTION.
- 2. REFER TO GUIDE SHEET 1113507\sample17 LEGEND OF SYMBOLS, SLOPES, AND POINT TABLE INFORMATION

**DESIGN**

**INTERIM REVIEW**

DOCUMENT INCOMPLETE. NOT INTENDED FOR PERMIT, BIDDING OR CONSTRUCTION.  
 ENGINEER: JOHN A. TYLER  
 P.E. SERIAL NO: 105193  
 DATE: 7/16/2018

**REVIEW AND APPROVAL**

**INTERIM REVIEW**

DOCUMENT INCOMPLETE. NOT INTENDED FOR PERMIT, BIDDING OR CONSTRUCTION.  
 ENGINEER: JAMES A. LUTZ  
 P.E. SERIAL NO: 84722  
 DATE: 7/16/2018

SCALE: PLAN 1" = 20'

REV. NO.	DATE	DESCRIPTION	BY

**Pape-Dawson ENGINEERS**

SAN ANTONIO | AUSTIN | HOUSTON | FORT WORTH | DALLAS  
 2000 NW LOOP 410 | SAN ANTONIO, TX 78213 | 210.375.9000  
TBPE FIRM REGISTRATION #470 | TBPLS FIRM REGISTRATION #10028800

**Texas Department of Transportation**  
 © 2018

SL 13  
 SW MILITARY B  
**SIDEWALK  
 CONSTRUCTION PLAN**  
 STA 597+00 TO STA 599+00  
 STA 603+00 TO STA 605+00  
SHEET 23 OF 45

DDM	FED. DIST. NO.	STATE	FEDERAL AID PROJECT NO.	HIGHWAY NO.		
	6	TEXAS		VARIES		
DDM	DIST.	COUNTY	CONT. NO.	SECT. NO.	JOB NO.	SHEET NO.
	SAT	BEXAR	0915	12	574	112

Plotted on 7/16/2018

Design File: P:\111135\07\design\City\Roadway\Small\11113507\Small\11113507\07\07B24.dgn



- NOTES:
- \* FOR CONTRACTOR INFORMATION ONLY
  - 1. THE EXISTENCE AND LOCATION OF ALL UTILITIES AND DRAINAGE STRUCTURES INDICATED IN THE PLANS ARE TAKEN FROM THE BEST RECORDS AVAILABLE AND ARE NOT GUARANTEED TO BE ACCURATE. CONTRACTOR SHALL COORDINATE WITH ALL UTILITY COMPANIES TO FIELD VERIFY UTILITIES PRIOR TO BEGINNING CONSTRUCTION.
  - 2. REFER TO GUIDE SHEET 1113507sample17 LEGEND OF SYMBOLS, SLOPES, AND POINT TABLE INFORMATION

**DESIGN**

**INTERIM REVIEW**

DOCUMENT INCOMPLETE. NOT INTENDED FOR PERMIT, BIDDING OR CONSTRUCTION.  
 ENGINEER: JOHN A. TYLER  
 P.E. SERIAL NO: 105193  
 DATE: 7/16/2018

**REVIEW AND APPROVAL**

**INTERIM REVIEW**

DOCUMENT INCOMPLETE. NOT INTENDED FOR PERMIT, BIDDING OR CONSTRUCTION.  
 ENGINEER: JAMES A. LUTZ  
 P.E. SERIAL NO: 84722  
 DATE: 7/16/2018

SCALE: PLAN 1" = 20'

REV. NO.	DATE	DESCRIPTION	BY

**Pape-Dawson ENGINEERS**

SAN ANTONIO | AUSTIN | HOUSTON | FORT WORTH | DALLAS  
 2000 NW LOOP 410 | SAN ANTONIO, TX 78213 | 210.375.9000  
 TBPE FIRM REGISTRATION #470 | TBPLS FIRM REGISTRATION #10028800



SL 13  
 SW MILITARY B  
**SIDEWALK  
 CONSTRUCTION PLAN**  
 STA 606+75 TO STA 610+25

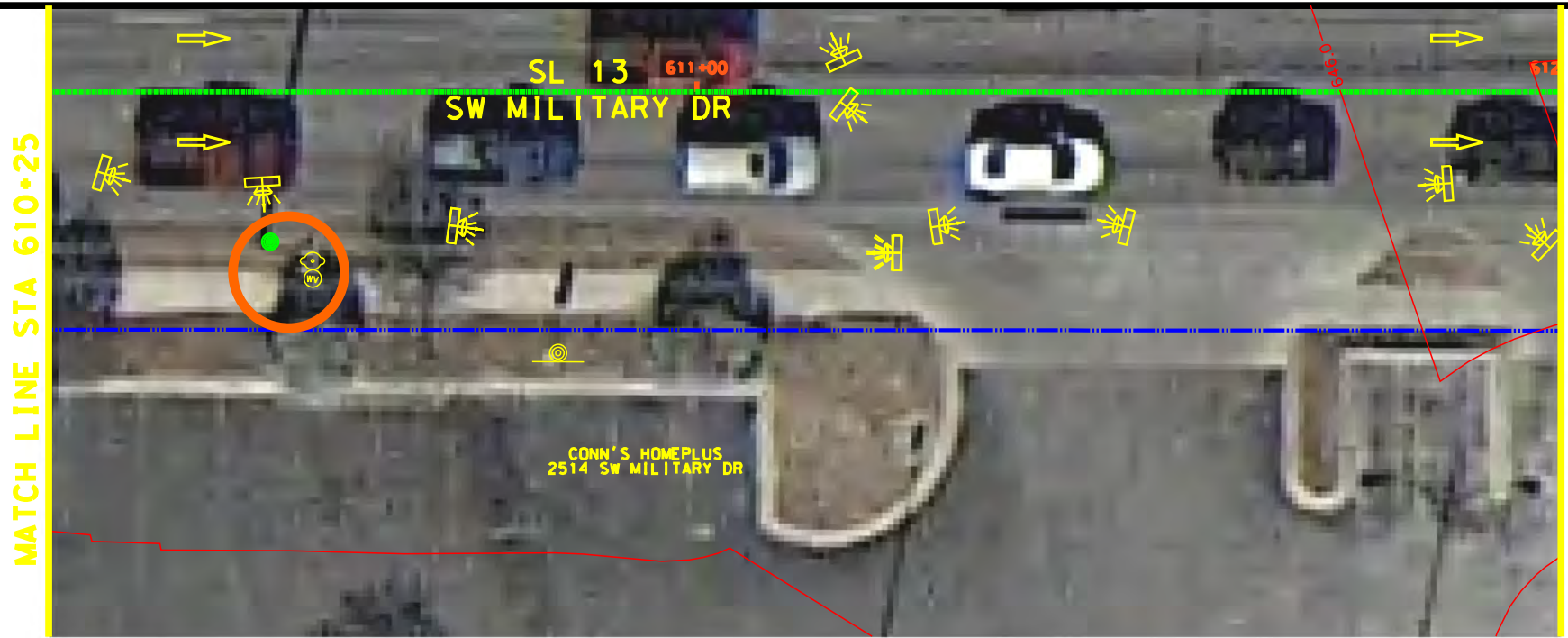
SHEET 24 OF 45

DDM	FED. DIST. NO.	STATE	FEDERAL AID PROJECT NO.	HIGHWAY NO.		
	6	TEXAS		VARIES		
DDM	DIST.	COUNTY	CONT. NO.	SECT. NO.	JOB NO.	SHEET NO.
	SAT	BEXAR	0915	12	574	113



Plotted on 7/16/2018

Design File: P:\111135\07\design\City\Roadway\Small\11113507\Small\11113507\07\07B\25.dgn



- NOTES:
- \* FOR CONTRACTOR INFORMATION ONLY
  - 1. THE EXISTENCE AND LOCATION OF ALL UTILITIES AND DRAINAGE STRUCTURES INDICATED IN THE PLANS ARE TAKEN FROM THE BEST RECORDS AVAILABLE AND ARE NOT GUARANTEED TO BE ACCURATE. CONTRACTOR SHALL COORDINATE WITH ALL UTILITY COMPANIES TO FIELD VERIFY UTILITIES PRIOR TO BEGINNING CONSTRUCTION.
  - 2. REFER TO GUIDE SHEET 1113507sample17 LEGEND OF SYMBOLS, SLOPES, AND POINT TABLE INFORMATION

**DESIGN**

**INTERIM REVIEW**

DOCUMENT INCOMPLETE. NOT INTENDED FOR PERMIT, BIDDING OR CONSTRUCTION.  
 ENGINEER: JOHN A. TYLER  
 P.E. SERIAL NO: 105193  
 DATE: 7/16/2018

**REVIEW AND APPROVAL**

**INTERIM REVIEW**

DOCUMENT INCOMPLETE. NOT INTENDED FOR PERMIT, BIDDING OR CONSTRUCTION.  
 ENGINEER: JAMES A. LUTZ  
 P.E. SERIAL NO: 84722  
 DATE: 7/16/2018

SCALE: PLAN 1" = 20'

REV. NO.	DATE	DESCRIPTION	BY

**Pape-Dawson ENGINEERS**

SAN ANTONIO | AUSTIN | HOUSTON | FORT WORTH | DALLAS  
 2000 NW LOOP 410 | SAN ANTONIO, TX 78213 | 210.375.9000  
 TBPE FIRM REGISTRATION #470 | TBPLS FIRM REGISTRATION #10028800

**Texas Department of Transportation**  
 © 2018

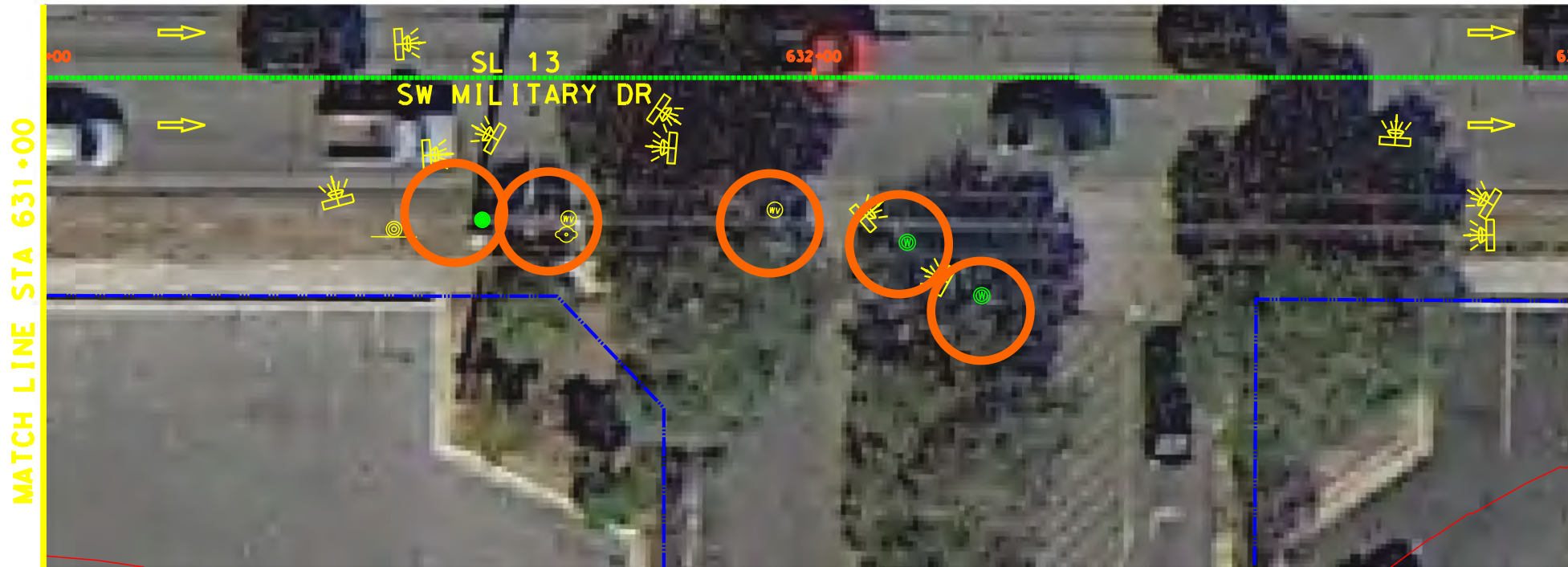
SL 13  
 SW MILITARY B  
**SIDEWALK  
 CONSTRUCTION PLAN**  
 STA 610+25 TO STA 614+00

SHEET 25 OF 45

DDM	FED. DIST. NO.	STATE	FEDERAL AID PROJECT NO.	HIGHWAY NO.		
	6	TEXAS		VARIES		
DDM	DIST.	COUNTY	CONT. NO.	SECT. NO.	JOB NO.	SHEET NO.
	SAT	BEXAR	0915	12	574	114

Plotted on 7/16/2018

Design File: P:\111135\07\design\City\Roadway\Small\1113507\Small\1113507\07\07B\26.dgn



- NOTES:
- \* FOR CONTRACTOR INFORMATION ONLY
  - 1. THE EXISTENCE AND LOCATION OF ALL UTILITIES AND DRAINAGE STRUCTURES INDICATED IN THE PLANS ARE TAKEN FROM THE BEST RECORDS AVAILABLE AND ARE NOT GUARANTEED TO BE ACCURATE. CONTRACTOR SHALL COORDINATE WITH ALL UTILITY COMPANIES TO FIELD VERIFY UTILITIES PRIOR TO BEGINNING CONSTRUCTION.
  - 2. REFER TO GUIDE SHEET 1113507-sample17 LEGEND OF SYMBOLS, SLOPES, AND POINT TABLE INFORMATION

**DESIGN**

**INTERIM REVIEW**

DOCUMENT INCOMPLETE. NOT INTENDED FOR PERMIT, BIDDING OR CONSTRUCTION.  
 ENGINEER: JOHN A. TYLER  
 P.E. SERIAL NO: 105193  
 DATE: 7/16/2018

**REVIEW AND APPROVAL**

**INTERIM REVIEW**

DOCUMENT INCOMPLETE. NOT INTENDED FOR PERMIT, BIDDING OR CONSTRUCTION.  
 ENGINEER: JAMES A. LUTZ  
 P.E. SERIAL NO: 84722  
 DATE: 7/16/2018

SCALE: PLAN 1" = 20'

REV. NO.	DATE	DESCRIPTION	BY

**Pape-Dawson ENGINEERS**

SAN ANTONIO | AUSTIN | HOUSTON | FORT WORTH | DALLAS  
 2000 NW LOOP 410 | SAN ANTONIO, TX 78213 | 210.375.9000  
 TBPE FIRM REGISTRATION #470 | TBPLS FIRM REGISTRATION #10028800



SL 13  
 SW MILITARY B  
**SIDEWALK  
 CONSTRUCTION PLAN**  
 STA 629+00 TO STA 633+00

SHEET 26 OF 45

DDM	FED. NO.	STATE	FEDERAL AID PROJECT NO.	HIGHWAY NO.
DDM	6	TEXAS		VARIABLES
DDM	DIST.	COUNTY	CONT. NO.	SECT. NO.
DDM	SAT	BEXAR	0915	12
DDM				JOB NO.
DDM				574
DDM				SHEET NO.
DDM				115

Plotted on 7/16/2018

Design File: P:\111135\07\design\City\Roadway\Small\1113507\Small\1113507.dgn

MATCH LINE STA 635+25



MATCH LINE STA 637+25

MATCH LINE STA 631+00



MATCH LINE STA 633+00

- NOTES:
- \* FOR CONTRACTOR INFORMATION ONLY
  - 1. THE EXISTENCE AND LOCATION OF ALL UTILITIES AND DRAINAGE STRUCTURES INDICATED IN THE PLANS ARE TAKEN FROM THE BEST RECORDS AVAILABLE AND ARE NOT GUARANTEED TO BE ACCURATE. CONTRACTOR SHALL COORDINATE WITH ALL UTILITY COMPANIES TO FIELD VERIFY UTILITIES PRIOR TO BEGINNING CONSTRUCTION.
  - 2. REFER TO GUIDE SHEET 1113507sample17 LEGEND OF SYMBOLS, SLOPES, AND POINT TABLE INFORMATION

DESIGN  
**INTERIM REVIEW**  
 DOCUMENT INCOMPLETE. NOT INTENDED FOR PERMIT, BIDDING OR CONSTRUCTION.  
 ENGINEER: JOHN A. TYLER  
 P.E. SERIAL NO: 105193  
 DATE: 7/16/2018

REVIEW AND APPROVAL  
**INTERIM REVIEW**  
 DOCUMENT INCOMPLETE. NOT INTENDED FOR PERMIT, BIDDING OR CONSTRUCTION.  
 ENGINEER: JAMES A. LUTZ  
 P.E. SERIAL NO: 84722  
 DATE: 7/16/2018

SCALE: PLAN 1" = 20'

REV. NO.	DATE	DESCRIPTION	BY

**Pape-Dawson ENGINEERS**  
 SAN ANTONIO | AUSTIN | HOUSTON | FORT WORTH | DALLAS  
 2000 NW LOOP 410 | SAN ANTONIO, TX 78213 | 210.375.9000  
 TBPE FIRM REGISTRATION #470 | TBPLS FIRM REGISTRATION #10028800



SL 13  
 SW MILITARY B  
**SIDEWALK CONSTRUCTION PLAN**  
 STA 635+25 TO STA 637+25  
 STA 643+75 TO STA 645+75  
 SHEET 27 OF 45

DDM	FED. DIST. NO.	STATE	FEDERAL AID PROJECT NO.	HIGHWAY NO.		
	6	TEXAS		VARIES		
DDM	DIST.	COUNTY	CONT. NO.	SECT. NO.	JOB NO.	SHEET NO.
	SAT	BEXAR	0915	12	574	116

Plotted on 7/16/2018

Design File: P:\111135\07\design\City\Roadway\Small\11113507\Small\11113507\07\07B-26.dgn



**NOTES:**

- \* FOR CONTRACTOR INFORMATION ONLY
- 1. THE EXISTENCE AND LOCATION OF ALL UTILITIES AND DRAINAGE STRUCTURES INDICATED IN THE PLANS ARE TAKEN FROM THE BEST RECORDS AVAILABLE AND ARE NOT GUARANTEED TO BE ACCURATE. CONTRACTOR SHALL COORDINATE WITH ALL UTILITY COMPANIES TO FIELD VERIFY UTILITIES PRIOR TO BEGINNING CONSTRUCTION.
- 2. REFER TO GUIDE SHEET 1113507-sample17 LEGEND OF SYMBOLS, SLOPES, AND POINT TABLE INFORMATION

**DESIGN**

**INTERIM REVIEW**

DOCUMENT INCOMPLETE. NOT INTENDED FOR PERMIT, BIDDING OR CONSTRUCTION.

ENGINEER: JOHN A. TYLER

P.E. SERIAL NO: 105193

DATE: 7/16/2018

**REVIEW AND APPROVAL**

**INTERIM REVIEW**

DOCUMENT INCOMPLETE. NOT INTENDED FOR PERMIT, BIDDING OR CONSTRUCTION.

ENGINEER: JAMES A. LUTZ

P.E. SERIAL NO: 84722

DATE: 7/16/2018

SCALE: PLAN 1" = 20'

REV. NO.	DATE	DESCRIPTION	BY

**Pape-Dawson ENGINEERS**

SAN ANTONIO | AUSTIN | HOUSTON | FORT WORTH | DALLAS  
2000 NW LOOP 410 | SAN ANTONIO, TX 78213 | 210.375.9000  
TBPCE FIRM REGISTRATION #470 | TBPES FIRM REGISTRATION #10028800

**Texas Department of Transportation**  
© 2018

SL 13  
SW MILITARY B  
**SIDEWALK  
CONSTRUCTION PLAN**  
STA 648+00 TO STA 650+00  
STA 653+00 TO STA 654+75  
SHEET 28 OF 45

CDM	FED. DIST. NO.	STATE	FEDERAL AID PROJECT NO.	HIGHWAY NO.		
	6	TEXAS		VARIES		
CDM	DIST.	COUNTY	CONT. NO.	SECT. NO.	JOB NO.	SHEET NO.
	SAT	BEXAR	0915	12	574	117

Plotted on 7/16/2018

Design File: P:\111135\07\design\City\Roadway\Small\11113507\Small\11113507\07\07B-29.dgn

MATCH LINE STA 654+75



MATCH LINE STA 661+00

NOTES:

- \* FOR CONTRACTOR INFORMATION ONLY
- 1. THE EXISTENCE AND LOCATION OF ALL UTILITIES AND DRAINAGE STRUCTURES INDICATED IN THE PLANS ARE TAKEN FROM THE BEST RECORDS AVAILABLE AND ARE NOT GUARANTEED TO BE ACCURATE. CONTRACTOR SHALL COORDINATE WITH ALL UTILITY COMPANIES TO FIELD VERIFY UTILITIES PRIOR TO BEGINNING CONSTRUCTION.
- 2. REFER TO GUIDE SHEET 1113507-sample17 LEGEND OF SYMBOLS, SLOPES, AND POINT TABLE INFORMATION

DESIGN

**INTERIM REVIEW**  
 DOCUMENT INCOMPLETE. NOT INTENDED FOR PERMIT, BIDDING OR CONSTRUCTION.  
 ENGINEER: JOHN A. TYLER  
 P.E. SERIAL NO: 105193  
 DATE: 7/16/2018

REVIEW AND APPROVAL

**INTERIM REVIEW**  
 DOCUMENT INCOMPLETE. NOT INTENDED FOR PERMIT, BIDDING OR CONSTRUCTION.  
 ENGINEER: JAMES A. LUTZ  
 P.E. SERIAL NO: 84722  
 DATE: 7/16/2018

SCALE: PLAN 1" = 20'

REV. NO.	DATE	DESCRIPTION	BY

**Pape-Dawson ENGINEERS**

SAN ANTONIO | AUSTIN | HOUSTON | FORT WORTH | DALLAS  
 2000 NW LOOP 410 | SAN ANTONIO, TX 78213 | 210.375.9000  
 TBPE FIRM REGISTRATION #470 | TBPLS FIRM REGISTRATION #10028800

Texas Department of Transportation  
 © 2018

SL 13  
 SW MILITARY B  
**SIDEWALK  
 CONSTRUCTION PLAN**  
 STA 654+75 TO STA 656+25  
 STA 659+00 TO STA 661+00  
 SHEET 29 OF 45

DDM	FED. DIST. NO.	STATE	FEDERAL AID PROJECT NO.	HIGHWAY NO.		
	6	TEXAS		VARIES		
DDM	DIST.	COUNTY	CONT. NO.	SECT. NO.	JOB NO.	SHEET NO.
	SAT	BEXAR	0915	12	574	118

Plotted on 7/16/2018

Design File: P:\111135\07\design\City\Roadway\Small\1113507\Small\1113507.dgn

MATCH LINE STA 661+00



MATCH LINE STA 663+00

MATCH LINE STA 663+00



NOTES:

- \* FOR CONTRACTOR INFORMATION ONLY
- 1. THE EXISTENCE AND LOCATION OF ALL UTILITIES AND DRAINAGE STRUCTURES INDICATED IN THE PLANS ARE TAKEN FROM THE BEST RECORDS AVAILABLE AND ARE NOT GUARANTEED TO BE ACCURATE. CONTRACTOR SHALL COORDINATE WITH ALL UTILITY COMPANIES TO FIELD VERIFY UTILITIES PRIOR TO BEGINNING CONSTRUCTION.
- 2. REFER TO GUIDE SHEET 1113507-sample17 LEGEND OF SYMBOLS, SLOPES, AND POINT TABLE INFORMATION

DESIGN

**INTERIM REVIEW**  
 DOCUMENT INCOMPLETE. NOT INTENDED FOR PERMIT, BIDDING OR CONSTRUCTION.  
 ENGINEER: JOHN A. TYLER  
 P.E. SERIAL NO: 105193  
 DATE: 7/16/2018

REVIEW AND APPROVAL

**INTERIM REVIEW**  
 DOCUMENT INCOMPLETE. NOT INTENDED FOR PERMIT, BIDDING OR CONSTRUCTION.  
 ENGINEER: JAMES A. LUTZ  
 P.E. SERIAL NO: 84722  
 DATE: 7/16/2018

SCALE: PLAN 1" = 20'

REV. NO.	DATE	DESCRIPTION	BY



SAN ANTONIO | AUSTIN | HOUSTON | FORT WORTH | DALLAS  
 2000 NW LOOP 410 | SAN ANTONIO, TX 78213 | 210.375.9000  
 TBPE FIRM REGISTRATION #470 | TBPLS FIRM REGISTRATION #10028800



SL 13  
 SW MILITARY B  
 SIDEWALK  
 CONSTRUCTION PLAN  
 STA 661+00 TO STA 665+00

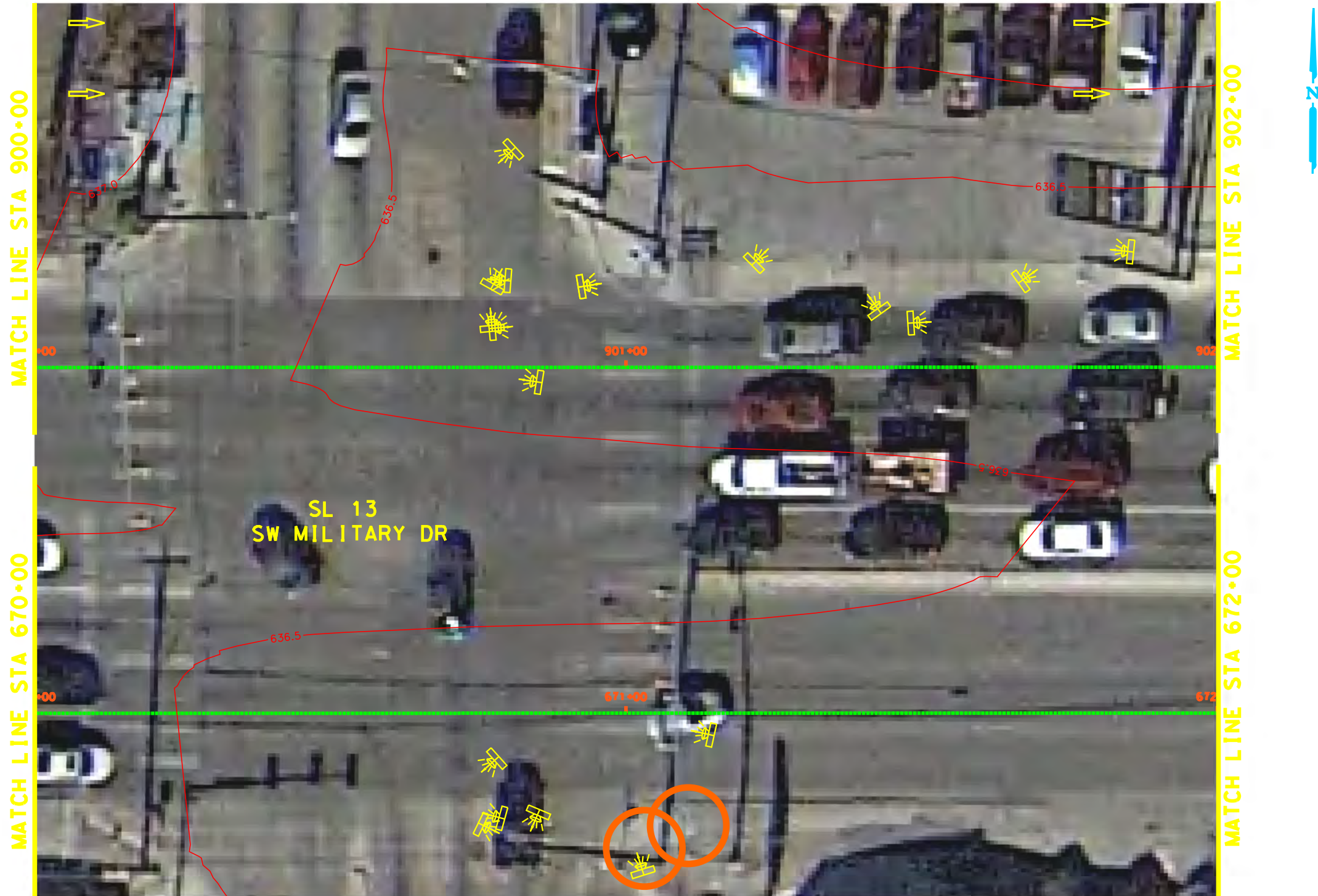
SHEET 30 OF 45

DDM	FED. DIST. NO.	STATE	FEDERAL AID PROJECT NO.	HIGHWAY NO.		
	6	TEXAS		VARIES		
DDM	DIST.	COUNTY	CONT. NO.	SECT. NO.	JOB NO.	SHEET NO.
	SAT	BEXAR	0915	12	574	119



Plotted on 7/16/2018

Design File: P:\111135\07\design\City\Roadway\Small\1113507\Small\1113507\07\yB-32.dgn



MATCH LINE STA 900+00

MATCH LINE STA 670+00

MATCH LINE STA 902+00

MATCH LINE STA 672+00

SL 13  
SW MILITARY DR

**NOTES:**

- \* FOR CONTRACTOR INFORMATION ONLY
- 1. THE EXISTENCE AND LOCATION OF ALL UTILITIES AND DRAINAGE STRUCTURES INDICATED IN THE PLANS ARE TAKEN FROM THE BEST RECORDS AVAILABLE AND ARE NOT GUARANTEED TO BE ACCURATE. CONTRACTOR SHALL COORDINATE WITH ALL UTILITY COMPANIES TO FIELD VERIFY UTILITIES PRIOR TO BEGINNING CONSTRUCTION.
- 2. REFER TO GUIDE SHEET 1113507sample17 LEGEND OF SYMBOLS, SLOPES, AND POINT TABLE INFORMATION

**DESIGN**

**INTERIM REVIEW**  
 DOCUMENT INCOMPLETE. NOT INTENDED FOR PERMIT, BIDDING OR CONSTRUCTION.  
 ENGINEER: JOHN A. TYLER  
 P.E. SERIAL NO: 105193  
 DATE: 7/16/2018

**REVIEW AND APPROVAL**

**INTERIM REVIEW**  
 DOCUMENT INCOMPLETE. NOT INTENDED FOR PERMIT, BIDDING OR CONSTRUCTION.  
 ENGINEER: JAMES A. LUTZ  
 P.E. SERIAL NO: 84722  
 DATE: 7/16/2018

SCALE: PLAN 1" = 20'

REV. NO.	DATE	DESCRIPTION	BY

**Pape-Dawson ENGINEERS**  
 SAN ANTONIO | AUSTIN | HOUSTON | FORT WORTH | DALLAS  
 2000 NW LOOP 410 | SAN ANTONIO, TX 78213 | 210.375.9000  
 TBPE FIRM REGISTRATION #470 | TBPLS FIRM REGISTRATION #10028800

**Texas Department of Transportation**  
 © 2018

SL 13  
 SW MILITARY B  
**SIDEWALK CONSTRUCTION PLAN**  
 STA 670+00 TO STA 672+00  
 STA 900+00 TO STA 902+00  
 SHEET 32 OF 45

DDM	FED. DIV. NO.	STATE	FEDERAL AID PROJECT NO.	HIGHWAY NO.		
	6	TEXAS		VARIES		
DDM	DIST.	COUNTY	CONT. NO.	SECT. NO.	JOB NO.	SHEET NO.
	SAT	BEXAR	0915	12	574	121



Plotted on 7/16/2018

Design File: P:\111135\07\design\City\Roadway\Small\11113507\Small\11113507\07\yB33.dgn



- NOTES:
- \* FOR CONTRACTOR INFORMATION ONLY
  - 1. THE EXISTENCE AND LOCATION OF ALL UTILITIES AND DRAINAGE STRUCTURES INDICATED IN THE PLANS ARE TAKEN FROM THE BEST RECORDS AVAILABLE AND ARE NOT GUARANTEED TO BE ACCURATE. CONTRACTOR SHALL COORDINATE WITH ALL UTILITY COMPANIES TO FIELD VERIFY UTILITIES PRIOR TO BEGINNING CONSTRUCTION.
  - 2. REFER TO GUIDE SHEET 1113507sample17 LEGEND OF SYMBOLS, SLOPES, AND POINT TABLE INFORMATION

DESIGN  
**INTERIM REVIEW**  
 DOCUMENT INCOMPLETE. NOT INTENDED FOR PERMIT, BIDDING OR CONSTRUCTION.  
 ENGINEER: JOHN A. TYLER  
 P.E. SERIAL NO: 105193  
 DATE: 7/16/2018

REVIEW AND APPROVAL  
**INTERIM REVIEW**  
 DOCUMENT INCOMPLETE. NOT INTENDED FOR PERMIT, BIDDING OR CONSTRUCTION.  
 ENGINEER: JAMES A. LUTZ  
 P.E. SERIAL NO: 84722  
 DATE: 7/16/2018

SCALE: PLAN 1" = 20'

REV. NO.	DATE	DESCRIPTION	BY

**Pape-Dawson ENGINEERS**  
 SAN ANTONIO | AUSTIN | HOUSTON | FORT WORTH | DALLAS  
 2000 NW LOOP 410 | SAN ANTONIO, TX 78213 | 210.375.9000  
 TBPE FIRM REGISTRATION #470 | TBPLS FIRM REGISTRATION #10028800

Texas Department of Transportation  
 © 2018

SL 13  
 SW MILITARY B  
**SIDEWALK CONSTRUCTION PLAN**  
 STA 672+00 TO STA 676+00

SHEET 33 OF 45

DDM	FED. DIST. NO.	STATE	FEDERAL AID PROJECT NO.	HIGHWAY NO.		
	6	TEXAS		VARIES		
DDM	DIST.	COUNTY	CONT. NO.	SECT. NO.	JOB NO.	SHEET NO.
	SAT	BEXAR	0915	12	574	122

Plotted on 7/16/2018

Design File: P:\111135\07\design\City\Roadway\Small\11113507\Small\11113507\07\07B\34.dgn



- NOTES:
- \* FOR CONTRACTOR INFORMATION ONLY
  - 1. THE EXISTENCE AND LOCATION OF ALL UTILITIES AND DRAINAGE STRUCTURES INDICATED IN THE PLANS ARE TAKEN FROM THE BEST RECORDS AVAILABLE AND ARE NOT GUARANTEED TO BE ACCURATE. CONTRACTOR SHALL COORDINATE WITH ALL UTILITY COMPANIES TO FIELD VERIFY UTILITIES PRIOR TO BEGINNING CONSTRUCTION.
  - 2. REFER TO GUIDE SHEET 1113507sample17 LEGEND OF SYMBOLS, SLOPES, AND POINT TABLE INFORMATION

DESIGN

**INTERIM REVIEW**

DOCUMENT INCOMPLETE. NOT INTENDED FOR PERMIT, BIDDING OR CONSTRUCTION.  
 ENGINEER: JOHN A. TYLER  
 P.E. SERIAL NO: 105193  
 DATE: 7/16/2018

REVIEW AND APPROVAL

**INTERIM REVIEW**

DOCUMENT INCOMPLETE. NOT INTENDED FOR PERMIT, BIDDING OR CONSTRUCTION.  
 ENGINEER: JAMES A. LUTZ  
 P.E. SERIAL NO: 84722  
 DATE: 7/16/2018

SCALE: PLAN 1" = 20'

REV. NO.	DATE	DESCRIPTION	BY

**Pape-Dawson ENGINEERS**

SAN ANTONIO | AUSTIN | HOUSTON | FORT WORTH | DALLAS  
 2000 NW LOOP 410 | SAN ANTONIO, TX 78213 | 210.375.9000  
 TBPE FIRM REGISTRATION #470 | TBPLS FIRM REGISTRATION #10028800

**Texas Department of Transportation**  
 © 2018

SL 13  
 SW MILITARY B  
**SIDEWALK  
 CONSTRUCTION PLAN**  
 STA 676+00 TO STA 680+00

SHEET 34 OF 45

DDM	FED. DIV. NO.	STATE	FEDERAL AID PROJECT NO.	HIGHWAY NO.	
	6	TEXAS		VARIES	
DIST.	COUNTY	CONT. NO.	SECT. NO.	JOB NO.	SHEET NO.
SAT	BEXAR	0915	12	574	123





Plotted on 7/16/2018

Design File: P:\111135\07\design\City\Roadway\Small\11113507\Small\11113507\07\07B\37.dgn



- NOTES:
- \* FOR CONTRACTOR INFORMATION ONLY
  - 1. THE EXISTENCE AND LOCATION OF ALL UTILITIES AND DRAINAGE STRUCTURES INDICATED IN THE PLANS ARE TAKEN FROM THE BEST RECORDS AVAILABLE AND ARE NOT GUARANTEED TO BE ACCURATE. CONTRACTOR SHALL COORDINATE WITH ALL UTILITY COMPANIES TO FIELD VERIFY UTILITIES PRIOR TO BEGINNING CONSTRUCTION.
  - 2. REFER TO GUIDE SHEET 1113507-sample17 LEGEND OF SYMBOLS, SLOPES, AND POINT TABLE INFORMATION

**DESIGN**

**INTERIM REVIEW**

DOCUMENT INCOMPLETE. NOT INTENDED FOR PERMIT, BIDDING OR CONSTRUCTION.  
 ENGINEER: JOHN A. TYLER  
 P.E. SERIAL NO: 105193  
 DATE: 7/16/2018

**REVIEW AND APPROVAL**

**INTERIM REVIEW**

DOCUMENT INCOMPLETE. NOT INTENDED FOR PERMIT, BIDDING OR CONSTRUCTION.  
 ENGINEER: JAMES A. LUTZ  
 P.E. SERIAL NO: 84722  
 DATE: 7/16/2018

SCALE: PLAN 1" = 20'

REV. NO.	DATE	DESCRIPTION	BY

**Pape-Dawson  
ENGINEERS**

SAN ANTONIO | AUSTIN | HOUSTON | FORT WORTH | DALLAS  
 2000 NW LOOP 410 | SAN ANTONIO, TX 78213 | 210.375.9000  
TBPE FIRM REGISTRATION #470 | TBPLS FIRM REGISTRATION #10028800

**Texas Department of Transportation**  
© 2018

SL 13  
SW MILITARY B  
**SIDEWALK  
CONSTRUCTION PLAN**  
STA 689+50 TO STA 694+50

SHEET 37 OF 45

DDM	FED. DIST. NO.	STATE	FEDERAL AID PROJECT NO.	HIGHWAY NO.		
	6	TEXAS		VARIES		
DDM	DIST.	COUNTY	CONT. NO.	SECT. NO.	JOB NO.	SHEET NO.
	SAT	BEXAR	0915	12	574	126





Plotted on 7/16/2018

Design File: P:\111135\07\design\City\Roadway\Small\11113507\Small\11113507\07\07B-40.dgn



- NOTES:
- \* FOR CONTRACTOR INFORMATION ONLY
  - 1. THE EXISTENCE AND LOCATION OF ALL UTILITIES AND DRAINAGE STRUCTURES INDICATED IN THE PLANS ARE TAKEN FROM THE BEST RECORDS AVAILABLE AND ARE NOT GUARANTEED TO BE ACCURATE. CONTRACTOR SHALL COORDINATE WITH ALL UTILITY COMPANIES TO FIELD VERIFY UTILITIES PRIOR TO BEGINNING CONSTRUCTION.
  - 2. REFER TO GUIDE SHEET 111360Rsample17 LEGEND OF SYMBOLS, SLOPES, AND POINT TABLE INFORMATION

**DESIGN**

**INTERIM REVIEW**

DOCUMENT INCOMPLETE. NOT INTENDED FOR PERMIT. BIDDING OR CONSTRUCTION.  
 ENGINEER: JOHN A. TYLER  
 P.E. SERIAL NO: 105193  
 DATE: 7/16/2018

**REVIEW AND APPROVAL**

**INTERIM REVIEW**

DOCUMENT INCOMPLETE. NOT INTENDED FOR PERMIT. BIDDING OR CONSTRUCTION.  
 ENGINEER: JAMES A. LUTZ  
 P.E. SERIAL NO: 84722  
 DATE: 7/16/2018

SCALE: PLAN 1" = 20'

REV. NO.	DATE	DESCRIPTION	BY

**Pape-Dawson ENGINEERS**

SAN ANTONIO | AUSTIN | HOUSTON | FORT WORTH | DALLAS  
 2000 NW LOOP 410 | SAN ANTONIO, TX 78213 | 210.375.9000  
TBPE FIRM REGISTRATION #470 | TBPLS FIRM REGISTRATION #10028800



SL 13  
 SW MILITARY B  
**SIDEWALK  
 CONSTRUCTION PLAN**  
 STA 707+50 TO STA 709+00

SHEET 40 OF 45

DDM	FED. DIST. NO.	STATE	FEDERAL AID PROJECT NO.	HIGHWAY NO.		
	6	TEXAS		VARIES		
DDM	DIST.	COUNTY	CONT. NO.	SECT. NO.	JOB NO.	SHEET NO.
	SAT	BEXAR	0915	12	574	128



Plotted on 7/16/2018

Design File: P:\11135\07\design\City\Roadway\Small\1113507\Small\1113507\07\B-41.dgn



- NOTES:
- \* FOR CONTRACTOR INFORMATION ONLY
  - 1. THE EXISTENCE AND LOCATION OF ALL UTILITIES AND DRAINAGE STRUCTURES INDICATED IN THE PLANS ARE TAKEN FROM THE BEST RECORDS AVAILABLE AND ARE NOT GUARANTEED TO BE ACCURATE. CONTRACTOR SHALL COORDINATE WITH ALL UTILITY COMPANIES TO FIELD VERIFY UTILITIES PRIOR TO BEGINNING CONSTRUCTION.
  - 2. REFER TO GUIDE SHEET 1113507sample17 LEGEND OF SYMBOLS, SLOPES, AND POINT TABLE INFORMATION

DESIGN  
**INTERIM REVIEW**  
 DOCUMENT INCOMPLETE. NOT INTENDED FOR PERMIT, BIDDING OR CONSTRUCTION.  
 ENGINEER: JOHN A. TYLER  
 P.E. SERIAL NO: 105193  
 DATE: 7/16/2018

REVIEW AND APPROVAL  
**INTERIM REVIEW**  
 DOCUMENT INCOMPLETE. NOT INTENDED FOR PERMIT, BIDDING OR CONSTRUCTION.  
 ENGINEER: JAMES A. LUTZ  
 P.E. SERIAL NO: 84722  
 DATE: 7/16/2018

SCALE: PLAN 1" = 20'

REV. NO.	DATE	DESCRIPTION	BY

**PAPE-DAWSON ENGINEERS**  
 SAN ANTONIO | AUSTIN | HOUSTON | FORT WORTH | DALLAS  
 2000 NW LOOP 410 | SAN ANTONIO, TX 78213 | 210.375.9000  
 TBPE FIRM REGISTRATION #470 | TBPLS FIRM REGISTRATION #10028800

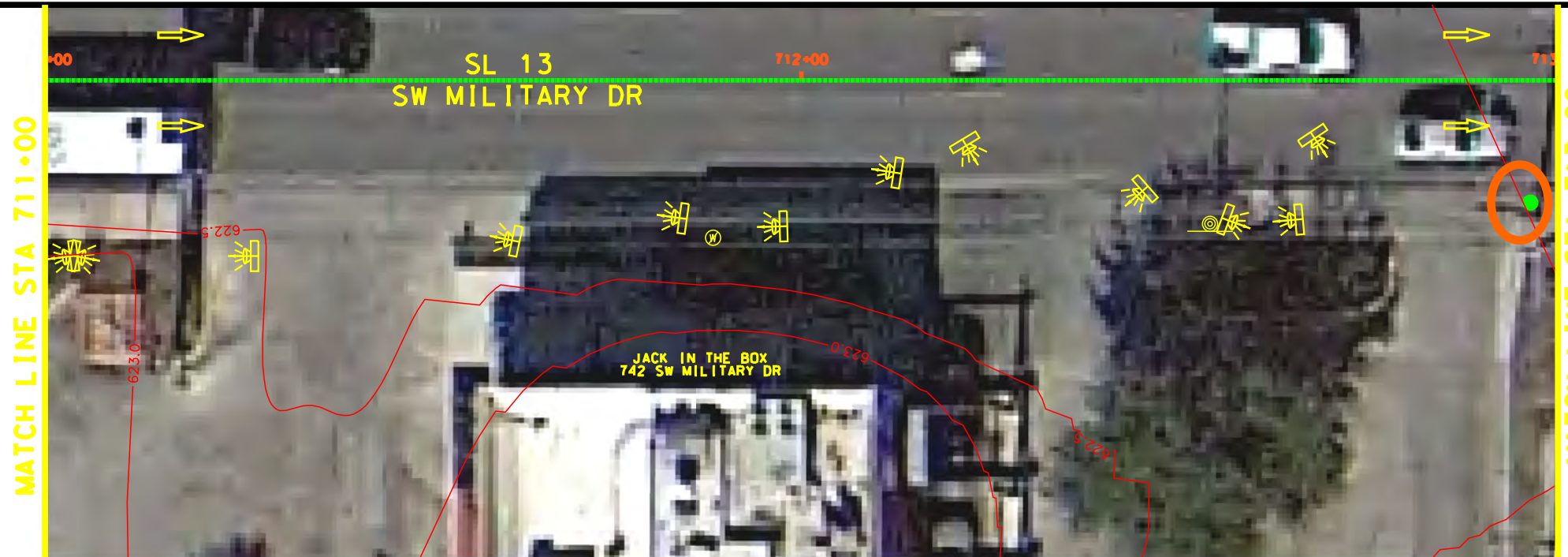
**Texas Department of Transportation**  
 © 2018

SL 13  
 SW MILITARY B  
**SIDEWALK CONSTRUCTION PLAN**  
 STA 709+00 TO STA 711+00  
 STA 939+00 TO STA 941+00  
 SHEET 41 OF 45

DDM	FED. DIV. NO.	STATE	FEDERAL AID PROJECT NO.	HIGHWAY NO.		
	6	TEXAS		VARIABLES		
DDM	DIST.	COUNTY	CONT. NO.	SECT. NO.	JOB NO.	SHEET NO.
	SAT	BEXAR	0915	12	574	130

Plotted on 7/16/2018

Design File: P:\111135\07\design\City\Roadway\Small\11113507\Small\11113507\07B-42.dgn



- NOTES:
- \* FOR CONTRACTOR INFORMATION ONLY
  - 1. THE EXISTENCE AND LOCATION OF ALL UTILITIES AND DRAINAGE STRUCTURES INDICATED IN THE PLANS ARE TAKEN FROM THE BEST RECORDS AVAILABLE AND ARE NOT GUARANTEED TO BE ACCURATE. CONTRACTOR SHALL COORDINATE WITH ALL UTILITY COMPANIES TO FIELD VERIFY UTILITIES PRIOR TO BEGINNING CONSTRUCTION.
  - 2. REFER TO GUIDE SHEET 1113507-sample17 LEGEND OF SYMBOLS, SLOPES, AND POINT TABLE INFORMATION

**DESIGN**

**INTERIM REVIEW**

DOCUMENT INCOMPLETE. NOT INTENDED FOR PERMIT, BIDDING OR CONSTRUCTION.  
 ENGINEER: JOHN A. TYLER  
 P.E. SERIAL NO: 105193  
 DATE: 7/16/2018

**REVIEW AND APPROVAL**

**INTERIM REVIEW**

DOCUMENT INCOMPLETE. NOT INTENDED FOR PERMIT, BIDDING OR CONSTRUCTION.  
 ENGINEER: JAMES A. LUTZ  
 P.E. SERIAL NO: 84722  
 DATE: 7/16/2018

SCALE: PLAN 1" = 20'

REV. NO.	DATE	DESCRIPTION	BY

**Pape-Dawson ENGINEERS**

SAN ANTONIO | AUSTIN | HOUSTON | FORT WORTH | DALLAS  
 2000 NW LOOP 410 | SAN ANTONIO, TX 78213 | 210.375.9000  
TBPE FIRM REGISTRATION #470 | TBPLS FIRM REGISTRATION #10028800



SL 13  
 SW MILITARY B  
**SIDEWALK  
 CONSTRUCTION PLAN**  
 STA 711+00 TO STA 715+00

SHEET 42 OF 45

DDM	FED. DIST. NO.	STATE	FEDERAL AID PROJECT NO.	HIGHWAY NO.		
	6	TEXAS		VARIES		
DDM	DIST.	COUNTY	CONT. NO.	SECT. NO.	JOB NO.	SHEET NO.
	SAT	BEXAR	0915	12	574	131



Plotted on 7/17/2018

Design File: P:\111135\07\design\City\Roadway\Small\11113507\Small\11113507\07\07B-44.dgn



- NOTES:
- \* FOR CONTRACTOR INFORMATION ONLY
  - 1. THE EXISTENCE AND LOCATION OF ALL UTILITIES AND DRAINAGE STRUCTURES INDICATED IN THE PLANS ARE TAKEN FROM THE BEST RECORDS AVAILABLE AND ARE NOT GUARANTEED TO BE ACCURATE. CONTRACTOR SHALL COORDINATE WITH ALL UTILITY COMPANIES TO FIELD VERIFY UTILITIES PRIOR TO BEGINNING CONSTRUCTION.
  - 2. REFER TO GUIDE SHEET 1113507-sample17 LEGEND OF SYMBOLS, SLOPES, AND POINT TABLE INFORMATION

DESIGN  
**INTERIM REVIEW**  
 DOCUMENT INCOMPLETE. NOT INTENDED FOR PERMIT, BIDDING OR CONSTRUCTION.  
 ENGINEER: JOHN A. TYLER  
 P.E. SERIAL NO: 105193  
 DATE: 7/17/2018

REVIEW AND APPROVAL  
**INTERIM REVIEW**  
 DOCUMENT INCOMPLETE. NOT INTENDED FOR PERMIT, BIDDING OR CONSTRUCTION.  
 ENGINEER: JAMES A. LUTZ  
 P.E. SERIAL NO: 84722  
 DATE: 7/17/2018

SCALE: PLAN 1" = 20'

REV. NO.	DATE	DESCRIPTION	BY

**Pape-Dawson Engineers**  
 SAN ANTONIO | AUSTIN | HOUSTON | FORT WORTH | DALLAS  
 2000 NW LOOP 410 | SAN ANTONIO, TX 78213 | 210.375.9000  
 TBPE FIRM REGISTRATION #470 | TBPLS FIRM REGISTRATION #10028800



SL 13  
 SW MILITARY B  
**SIDEWALK CONSTRUCTION PLAN**  
 STA 719+00 TO STA 721+00

SHEET 44 OF 45

DDM	FED. DIST. NO.	STATE	FEDERAL AID PROJECT NO.	HIGHWAY NO.
	6	TEXAS		VARIES
DDM	DIST.	COUNTY	CONT. NO.	SECT. NO.
	SAT	BEXAR	0915	12
DDM	JOB NO.	SHEET NO.		
	574	133		

Plotted on 7/17/2018



Design File: P:\111135\07\design\City\Roadway\Small\11113507\Small\11113507\07-18-18.dgn



**NOTES:**

- \* FOR CONTRACTOR INFORMATION ONLY
- 1. THE EXISTENCE AND LOCATION OF ALL UTILITIES AND DRAINAGE STRUCTURES INDICATED IN THE PLANS ARE TAKEN FROM THE BEST RECORDS AVAILABLE AND ARE NOT GUARANTEED TO BE ACCURATE. CONTRACTOR SHALL COORDINATE WITH ALL UTILITY COMPANIES TO FIELD VERIFY UTILITIES PRIOR TO BEGINNING CONSTRUCTION.
- 2. REFER TO GUIDE SHEET 1113507-sample17 LEGEND OF SYMBOLS, SLOPES, AND POINT TABLE INFORMATION

**DESIGN**

**INTERIM REVIEW**

DOCUMENT INCOMPLETE. NOT INTENDED FOR PERMIT, BIDDING OR CONSTRUCTION.  
 ENGINEER: JOHN A. TYLER  
 P.E. SERIAL NO: 105193  
 DATE: 7/17/2018

**REVIEW AND APPROVAL**

**INTERIM REVIEW**

DOCUMENT INCOMPLETE. NOT INTENDED FOR PERMIT, BIDDING OR CONSTRUCTION.  
 ENGINEER: JAMES A. LUTZ  
 P.E. SERIAL NO: 84722  
 DATE: 7/17/2018

SCALE: PLAN 1" = 20'

REV. NO.	DATE	DESCRIPTION	BY

**Pape-Dawson ENGINEERS**

SAN ANTONIO | AUSTIN | HOUSTON | FORT WORTH | DALLAS  
 2000 NW LOOP 410 | SAN ANTONIO, TX 78213 | 210.375.9000  
 TBPE FIRM REGISTRATION #470 | TBPLS FIRM REGISTRATION #10028800

**Texas Department of Transportation**  
 © 2018

SL 13  
 SW MILITARY B  
**SIDEWALK  
 CONSTRUCTION PLAN**  
 STA 723+00 TO END PROJECT

SHEET 45 OF 45

DDM	FED. DIST. NO.	STATE	FEDERAL AID PROJECT NO.	HIGHWAY NO.		
	6	TEXAS		VARIES		
DDM	DIST.	COUNTY	CONT. NO.	SECT. NO.	JOB NO.	SHEET NO.
	SAT	BEXAR	0915	12	574	134