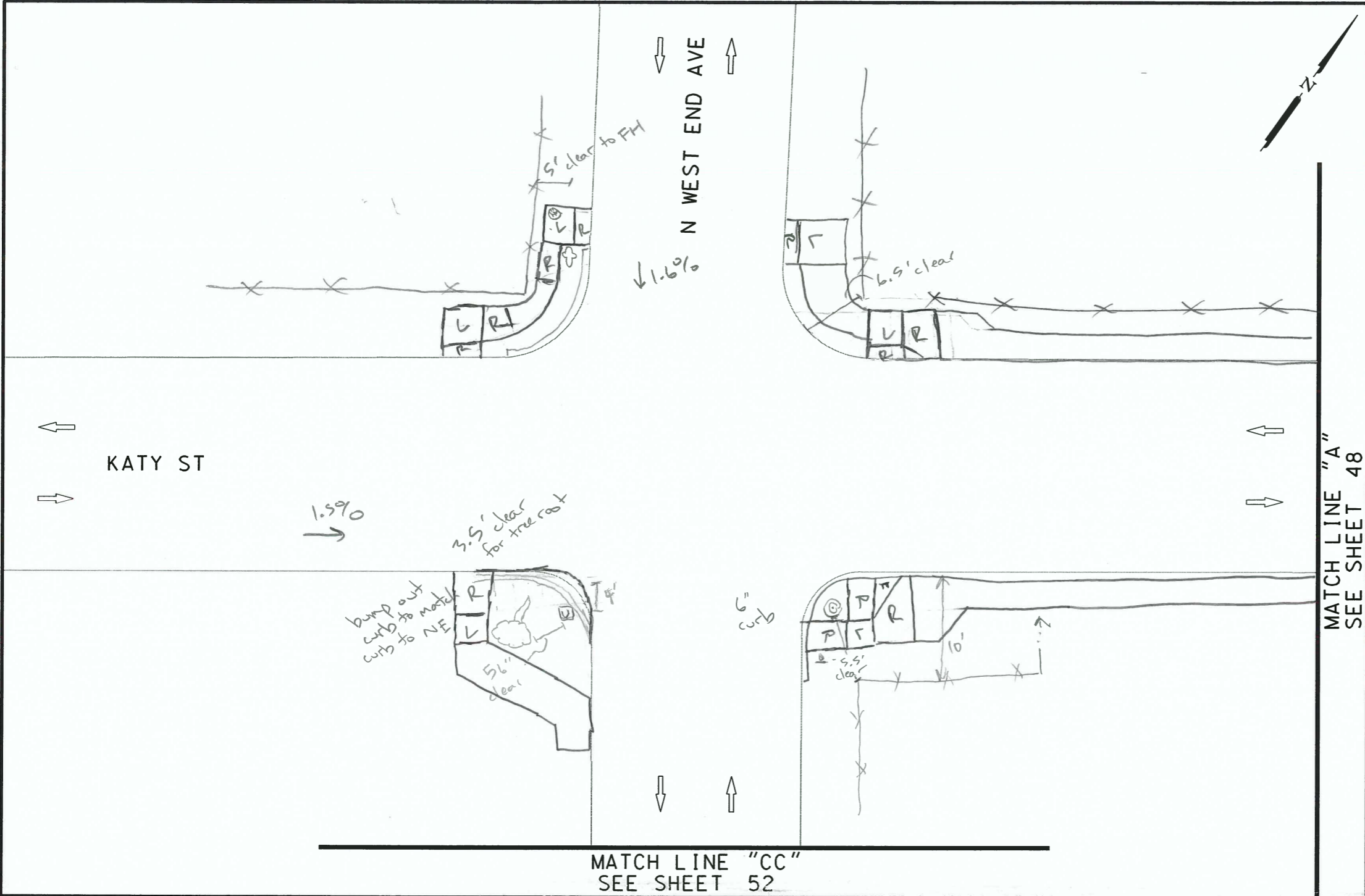


PLOTTED ON: 10/31/2016

DESIGN FILENAME: P:\1113800\00\Design\Civil\Roadway\1113800_NB_KatySt_Sheet A.dgn



ITEM	DESCRIPTION	UNIT	QTY
0104-6001	REMOVING CONC (PAV)	SY	10000



NB_16-025_WS_11

CF 11/2

FD

NOTES:

- * FOR CONTRACTOR INFORMATION ONLY
- 1. THE EXISTENCE AND LOCATION OF ALL UTILITIES AND DRAINAGE STRUCTURES INDICATED IN THE PLANS ARE TAKEN FROM THE BEST RECORDS AVAILABLE AND ARE NOT GUARANTEED TO BE ACCURATE. CONTRACTOR SHALL COORDINATE WITH ALL UTILITY COMPANIES TO FIELD VERIFY UTILITIES PRIOR TO BEGINNING CONSTRUCTION.

DESIGN
INTERIM REVIEW
 DOCUMENT INCOMPLETE. NOT INTENDED FOR PERMIT, BIDDING OR CONSTRUCTION.
 ENGINEER: JOHN A. TYLER
 P.E. SERIAL NO: 105193
 DATE: 10/31/2016

REVIEW AND APPROVAL
INTERIM REVIEW
 DOCUMENT INCOMPLETE. NOT INTENDED FOR PERMIT, BIDDING OR CONSTRUCTION.
 ENGINEER: JAMES A. LUTZ
 P.E. SERIAL NO: 84722
 DATE: 10/31/2016

NOT TO SCALE

REV. NO.	DATE	DESCRIPTION	BY

PAPE-DAWSON ENGINEERS
 SAN ANTONIO | AUSTIN | HOUSTON | FORT WORTH | DALLAS
 2000 NW LOOP 410 | SAN ANTONIO, TX 78213 | 210.375.9000
 TBPE FIRM REGISTRATION #470 | TBPLS FIRM REGISTRATION #1002800

Texas Department of Transportation
 © 2016

CURB RAMP PROGRAM

KATY ST
 SIDEWALK SHEET A

SHEET 1 OF 5

CHK DGN:	FED. RD. DIV. NO.	STATE	CITY	HIGHWAY NO.		
	6	TEXAS	NEW BRAUNFELS	VA		
CHK DGN:	DIST.	COUNTY	CONT. NO.	SECT. NO.	JOB NO.	SHEET NO.
	SAT	COMAL				47

SPECIAL NOTES & DETAILS

FOR ENVIRONMENTAL REVIEW ONLY

LEGEND

- CAMERA POSITION
- DRAINAGE FLOW ARROW
- F FLARE
- FIRE HYDRANT
- GAS METER
- GAS VALVE
- GROUND BOX
- GUY ANCHOR
- IRRIGATION
- JUNCTION BOX
- L LANDING
- L1 LANDING (COMMON)
- LS LEVEL SIDEWALK (2% MAX)
- LIGHT POLE
- LUMINAIRE STANDARD
- MAIL BOX
- MANHOLE
- NSPI NO SEPARATE PAY ITEM
- PEDESTAL SIGNAL POLE
- PI POINT
- POWER/UTILITY POLE
- R RAMP
- RR RIPRAP (CONC)
- SIGN
- SODDING
- TRANSITION
- SL LONGITUDINAL SLOPES MAY NOT EXCEED 5%, CROSS SLOPES MAY NOT EXCEED 2%
- TRAFFIC FLOW
- TRAFFIC SIGNAL BOX
- TRAFFIC SIGNAL CONTROLLER
- TRAFFIC SIGNAL POLE
- TRANSFORMER
- TREE/BUSHES
- UTILITY PEDESTAL/MARKER
- UTILITY VAULT
- WATER METER
- WATER VALVE

MATCH LINE "CC"
 SEE SHEET 52

MATCH LINE "A"
 SEE SHEET 48