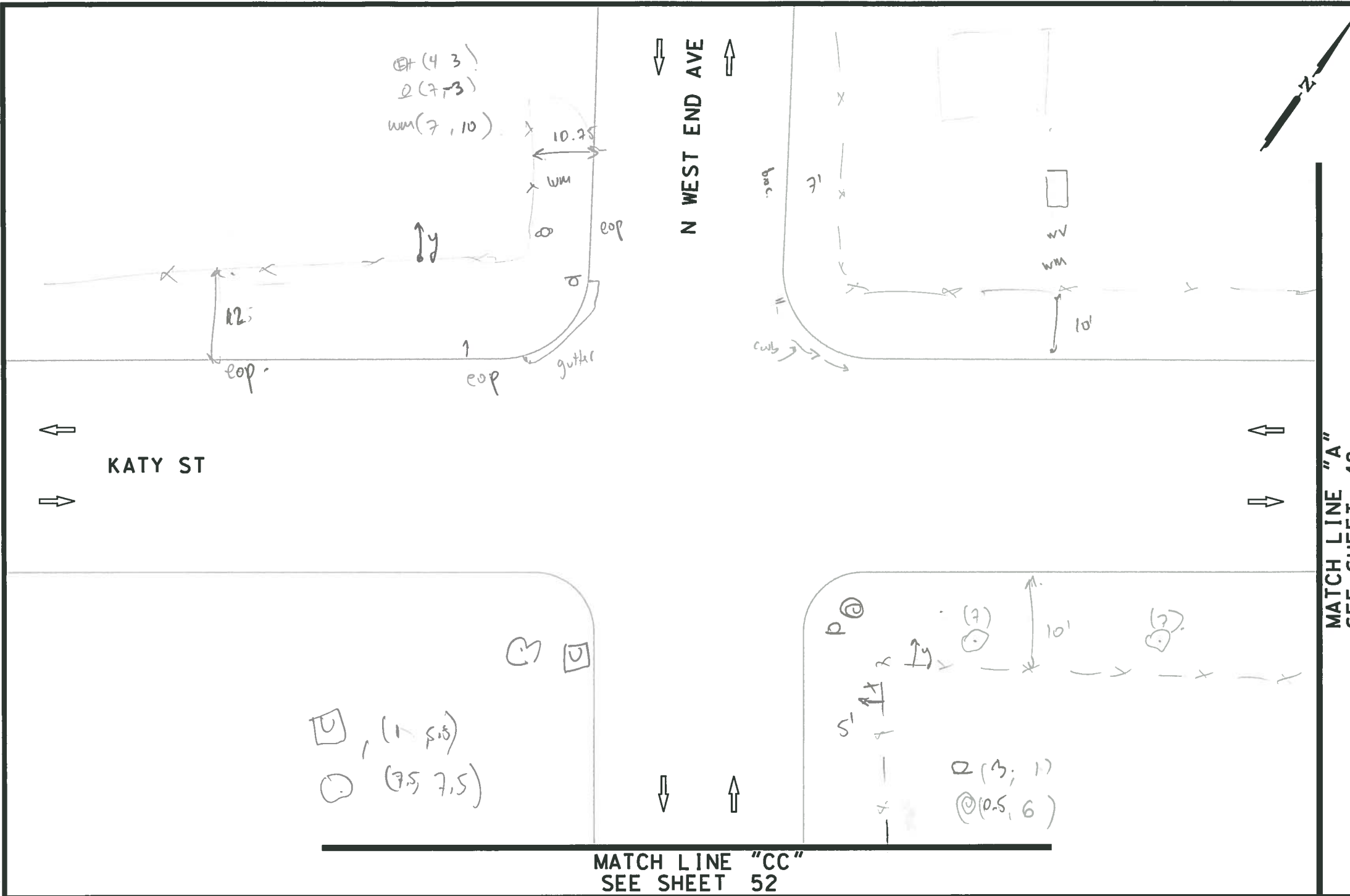


PLOTTED ON: 10/28/2016

DESIGN FILENAME: P:\1113800\00\Design\Civil\Roadway\1113800_NB_KatySt_SheetA.dgn



ITEM	DESCRIPTION	UNIT	QTY
0104-6001	REMOVING CONC (PAV)	SY	10000



NB_16-025_WS_11

AWW
DC
11/2/16

- NOTES:
- * FOR CONTRACTOR INFORMATION ONLY
 - 1. THE EXISTENCE AND LOCATION OF ALL UTILITIES AND DRAINAGE STRUCTURES INDICATED IN THE PLANS ARE TAKEN FROM THE BEST RECORDS AVAILABLE AND ARE NOT GUARANTEED TO BE ACCURATE. CONTRACTOR SHALL COORDINATE WITH ALL UTILITY COMPANIES TO FIELD VERIFY UTILITIES PRIOR TO BEGINNING CONSTRUCTION. DESIGN

INTERIM REVIEW
 DOCUMENT INCOMPLETE. NOT INTENDED FOR PERMIT, BIDDING OR CONSTRUCTION.
 ENGINEER: JOHN A. TYLER
 P.E. SERIAL NO: 105193
 DATE: 10/28/2016

INTERIM REVIEW
 DOCUMENT INCOMPLETE. NOT INTENDED FOR PERMIT, BIDDING OR CONSTRUCTION.
 ENGINEER: JAMES A. LUTZ
 P.E. SERIAL NO: 84722
 DATE: 10/28/2016

NOT TO SCALE

REV. NO.	DATE	DESCRIPTION	BY

PAPE-DAWSON ENGINEERS
 SAN ANTONIO | AUSTIN | HOUSTON | FORT WORTH | DALLAS
 2000 NW LOOP 410 | SAN ANTONIO, TX 78213 | 210.375.8000
 TPPE FIRM REGISTRATION #470 | TDPLE FIRM REGISTRATION #10028800

Texas Department of Transportation © 2016

CURB RAMP PROGRAM

KATY ST SIDEWALK SHEET A

SHEET 1 OF 5

DCR#	FED. NO. DIV. NO.	STATE	CITY	HIGHWAY NO.		
	6	TEXAS	NEW BRAUNFELS	VA		
DCR#	DIST.	COUNTY	CONT. NO.	SECT. NO.	JOB NO.	SHEET NO.
	SAT	COMAL				47

SPECIAL NOTES & DETAILS

FOR ENVIRONMENTAL REVIEW ONLY

LEGEND

CAMERA POSITION	LIGHT POLE	SL LONGITUDINAL SLOPES MAY NOT EXCEED 5%. CROSS SLOPES MAY NOT EXCEED 2%
DRAINAGE FLOW ARROW	LUMINAIRE STANDARD	TRAFFIC FLOW
F FLARE	MAIL BOX	TRAFFIC SIGNAL BOX
FIRE HYDRANT	MANHOLE	TRAFFIC SIGNAL CONTROLLER
GAS METER	NSPI NO SEPARATE PAY ITEM	TRAFFIC SIGNAL POLE
GAS VALVE	PEDESTAL SIGNAL POLE	TRANSFORMER
GROUND BOX	PI POINT	TREE/BUSHES
GUY ANCHOR	POWER/UTILITY POLE	UTILITY PEDESTAL/MARKER
IRRIGATION	R RAMP	UTILITY VAULT
JUNCTION BOX	RR RIPRAP (CONC)	WATER METER
L LANDING	SIGN	WATER VALVE
L1 LANDING (COMMON)	SODDING	
LS LEVEL SIDEWALK (2% MAX)	T TRANSITION	