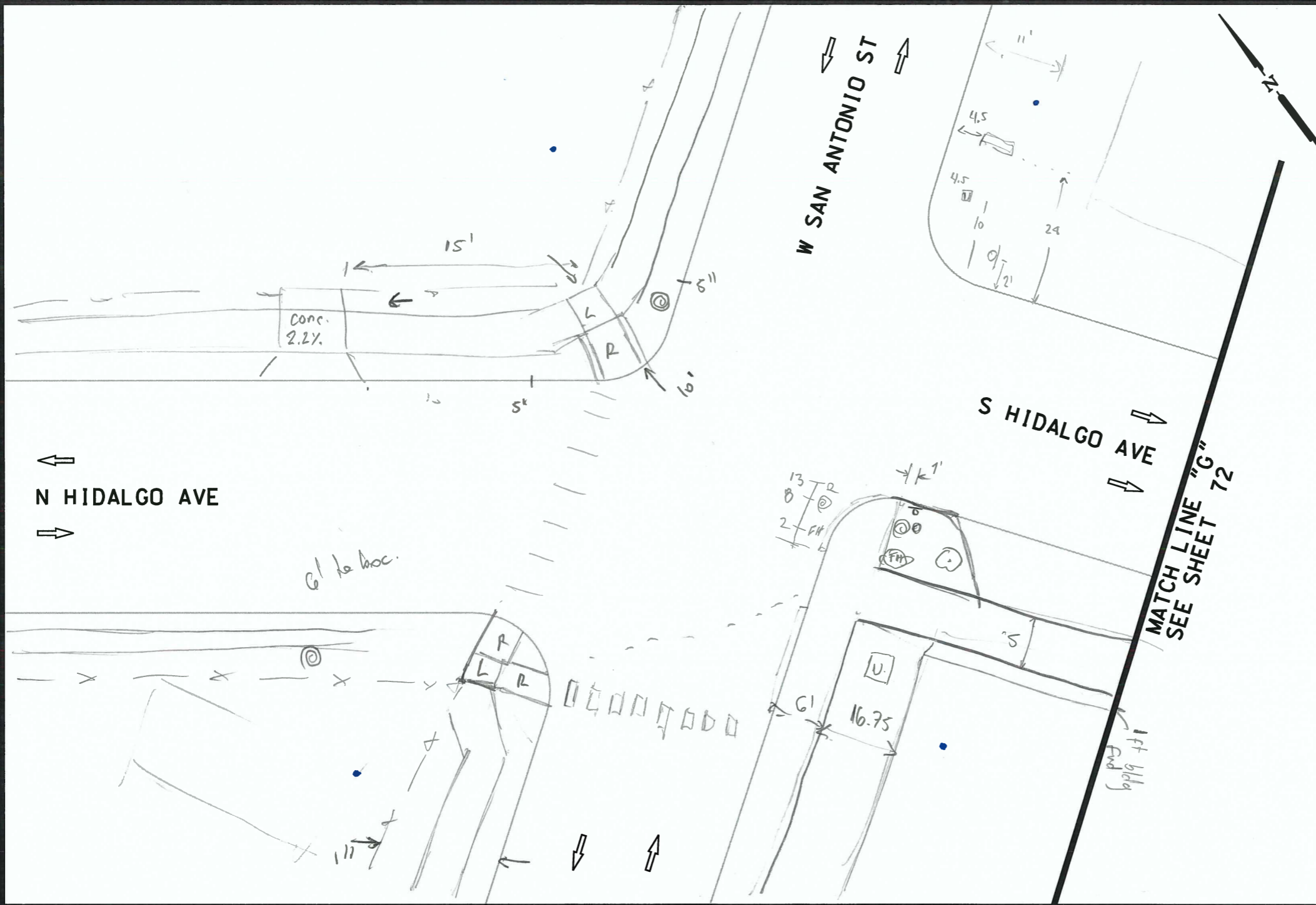


PLOTTED ON: 10/28/2016

DESIGN FILENAME: P:\11\38\00\Design\Civil\HidalgoAve_SheetG.dgn

MATCH LINE "F"
SEE SHEET 70



ITEM	DESCRIPTION	UNIT	QTY
------	-------------	------	-----



NB_16-025_WS_35

Ann FD
11/3/16

DC

- NOTES:
- * FOR CONTRACTOR INFORMATION ONLY
 - 1. THE EXISTENCE AND LOCATION OF ALL UTILITIES AND DRAINAGE STRUCTURES INDICATED IN THE PLANS ARE TAKEN FROM THE BEST RECORDS AVAILABLE AND ARE NOT GUARANTEED TO BE ACCURATE. CONTRACTOR SHALL COORDINATE WITH ALL UTILITY COMPANIES TO FIELD VERIFY UTILITIES PRIOR TO BEGINNING CONSTRUCTION DESIGN.

INTERIM REVIEW
DOCUMENT INCOMPLETE. NOT INTENDED FOR PERMIT, BIDDING OR CONSTRUCTION.
ENGINEER: JOHN A. TYLER
P.E. SERIAL NO: 105193
DATE: 10/28/2016

INTERIM REVIEW
DOCUMENT INCOMPLETE. NOT INTENDED FOR PERMIT, BIDDING OR CONSTRUCTION.
ENGINEER: JAMES A. LUTZ
P.E. SERIAL NO: 84722
DATE: 10/28/2016

NOT TO SCALE

REV. NO.	DATE	DESCRIPTION	BY

PAPE-DAWSON ENGINEERS
SAN ANTONIO | AUSTIN | HOUSTON | FORT WORTH | DALLAS
2000 NW LOOP 410 | SAN ANTONIO, TX 78213 | 210.375.8000
TBPCE FIRM REGISTRATION #470 | TBPPLS FIRM REGISTRATION #10028800

Texas Department of Transportation © 2016

CURB RAMP PROGRAM

HIDALGO AVE SIDEWALK SHEET G

SHEET 7 OF 1

DIST.	FED. RD. DIV. NO.	STATE	CITY	HIGHWAY	
SAT	6	TEXAS	NEW BRAUNFELS	VA	
DIST.	COUNTY	CONT. NO.	SECT. NO.	JOB NO.	SHEET #
SAT	COMAL				71

SPECIAL NOTES & DETAILS

FOR ENVIRONMENTAL REVIEW ONLY

LEGEND	
CAMERA POSITION	LIGHT POLE
DRAINAGE FLOW ARROW	LUMINAIRE STANDARD
FLARE	MAIL BOX
FIRE HYDRANT	MANHOLE
GAS METER	NSPI NO SEPARATE PAY ITEM
GAS VALVE	PEDESTAL SIGNAL POLE
GROUND BOX	PI POINT
GUY ANCHOR	POWER/UTILITY POLE
IRRIGATION	R RAMP
JUNCTION BOX	RR RIPRAP (CONC)
L LANDING	SIGN
L1 LANDING (COMMON)	SODDING
LS LEVEL SIDEWALK (2% MAX)	T TRANSITION
SL LONGITUDINAL SLOPES MAY NOT EXCEED 5%. CROSS SLOPES MAY NOT EXCEED 2%	TRAFFIC FLOW
TRAFFIC SIGNAL BOX	TRAFFIC SIGNAL CONTROLLER
TRAFFIC SIGNAL POLE	TRANSFORMER
TREE/BUSHES	UTILITY PEDESTAL/MARKER
UTILITY VAULT	WATER METER
WATER VALVE	