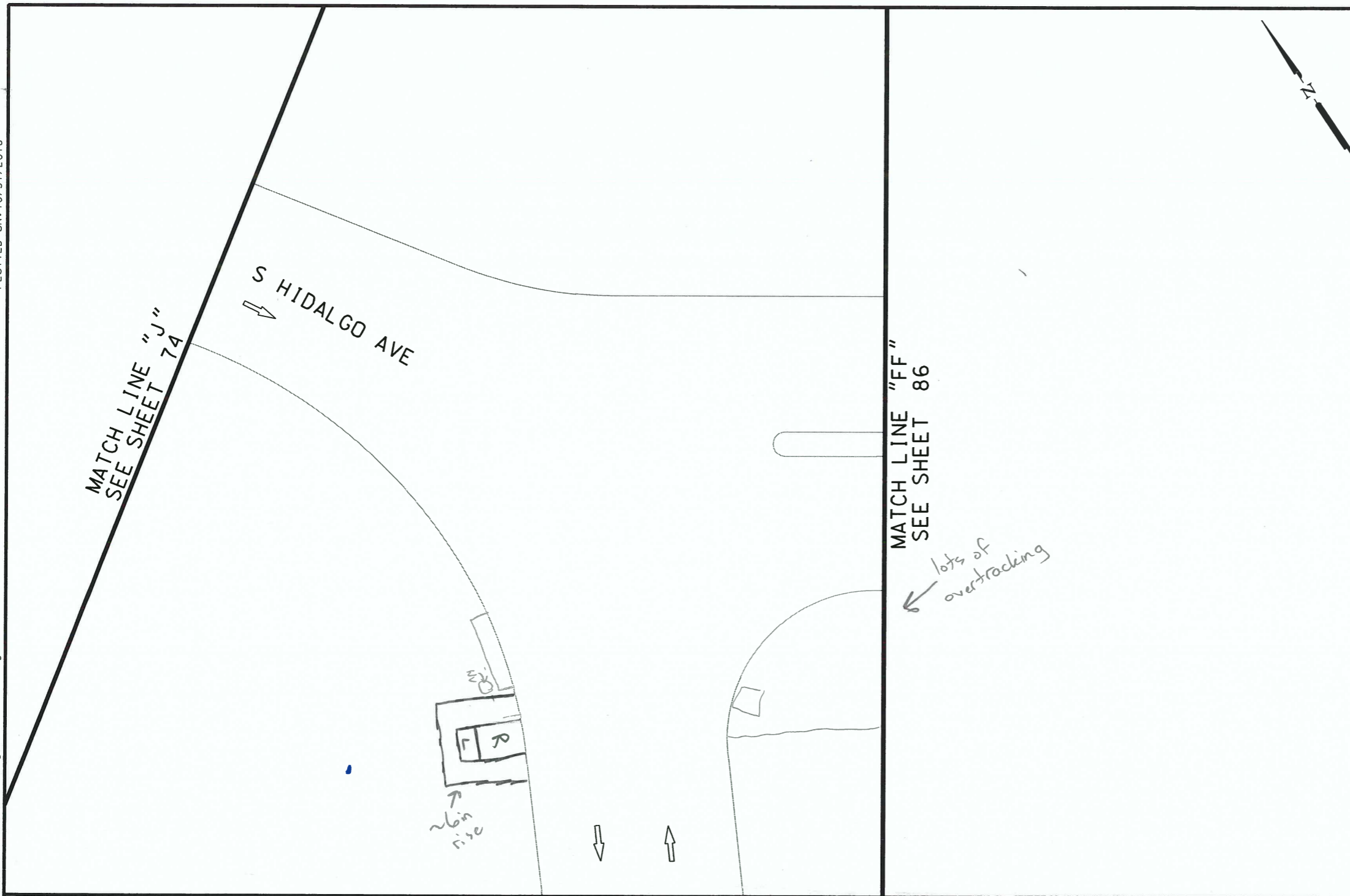


PLOTTED ON: 10/31/2016

DESIGN FILENAME: P:\111*38*00*Design\Civil\Roadway\113800_NB-HidalgoAve_SheetK.dgn



ITEM	DESCRIPTION	UNIT	QTY
------	-------------	------	-----



NB_16-025_WS_39

CF 11/3
FD

- NOTES:
- * FOR CONTRACTOR INFORMATION ONLY
 - 1. THE EXISTENCE AND LOCATION OF ALL UTILITIES AND DRAINAGE STRUCTURES INDICATED IN THE PLANS ARE TAKEN FROM THE BEST RECORDS AVAILABLE AND ARE NOT GUARANTEED TO BE ACCURATE. CONTRACTOR SHALL COORDINATE WITH ALL UTILITY COMPANIES TO FIELD VERIFY UTILITIES PRIOR TO BEGINNING CONSTRUCTION.

INTERIM REVIEW
DOCUMENT INCOMPLETE. NOT INTENDED FOR PERMIT, BIDDING OR CONSTRUCTION.
ENGINEER: JOHN A. TYLER
P.E. SERIAL NO: 105193
DATE: 10/31/2016

INTERIM REVIEW
DOCUMENT INCOMPLETE. NOT INTENDED FOR PERMIT, BIDDING OR CONSTRUCTION.
ENGINEER: JAMES A. LUTZ
P.E. SERIAL NO: 84722
DATE: 10/31/2016

NOT TO SCALE

REV. NO.	DATE	DESCRIPTION	BY

PAPE-DAWSON ENGINEERS
SAN ANTONIO | AUSTIN | HOUSTON | FORT WORTH | DALLAS
2000 NW LOOP 410 | SAN ANTONIO, TX 78213 | 210.375.9000
TBPE FIRM REGISTRATION #470 | TBPLS FIRM REGISTRATION #10028800

Texas Department of Transportation
© 2016

CURB RAMP PROGRAM

**HIDALGO AVE
SIDEWALK SHEET K**

SHEET 11 OF 1

SPECIAL NOTES & DETAILS

FOR ENVIRONMENTAL REVIEW ONLY

LEGEND

- CAMERA POSITION
- LIGHT POLE
- LONGITUDINAL SLOPES MAY NOT EXCEED 5%. CROSS SLOPES MAY NOT EXCEED 2%
- DRAINAGE FLOW ARROW
- LUMINAIRE STANDARD
- FLARE
- MAIL BOX
- FIRE HYDRANT
- MANHOLE
- GAS METER
- NSPI NO SEPARATE PAY ITEM
- GAS VALVE
- PEDESTAL SIGNAL POLE
- GROUND BOX
- PI POINT
- GUY ANCHOR
- POWER/UTILITY POLE
- IRRIGATION
- R RAMP
- JUNCTION BOX
- RR RIPRAP (CONC)
- L LANDING
- SIGN
- L1 LANDING (COMMON)
- SODDING
- LS LEVEL SIDEWALK (2% MAX)
- T TRANSITION
- TRAFFIC FLOW
- TRAFFIC SIGNAL BOX
- TRAFFIC SIGNAL CONTROLLER
- TRAFFIC SIGNAL POLE
- TRANSFORMER
- TREE/BUSHES
- UTILITY PEDESTAL/MARKER
- UTILITY VAULT
- WATER METER
- WATER VALVE