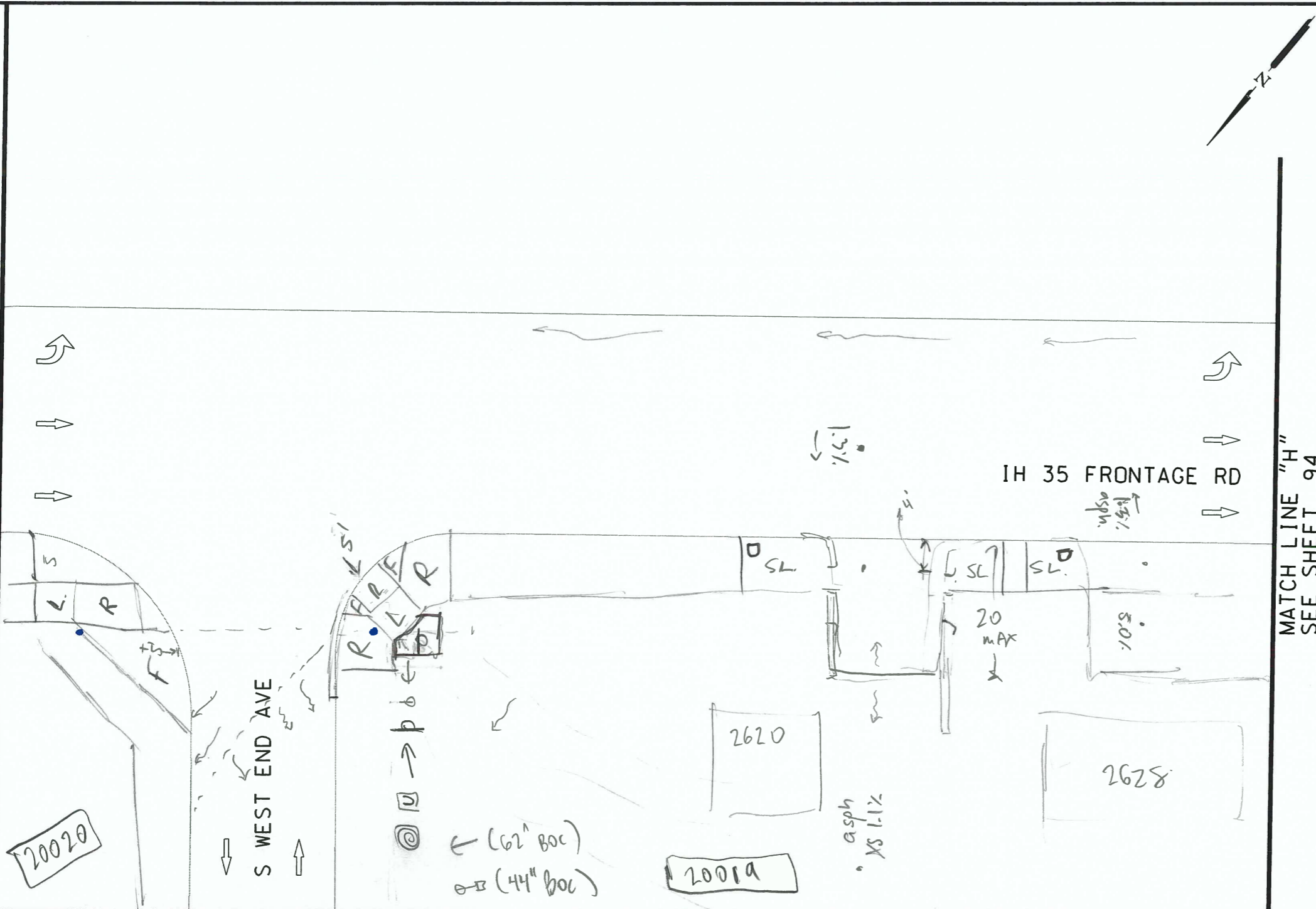


PLOTTED ON: 10/31/2016

DESIGN FILENAME: P:\111\38\00\Design\Civil\Roadway\113800_NB_IH_35_SBFR_SheetH.dgn

MATCH LINE "G"
SEE SHEET 92



ITEM	DESCRIPTION	UNIT	QTY
------	-------------	------	-----



NB_16-025_WS_57

Amw
11/1/16
PD

NOTES:

- * FOR CONTRACTOR INFORMATION ONLY
- 1. THE EXISTENCE AND LOCATION OF ALL UTILITIES AND DRAINAGE STRUCTURES INDICATED IN THE PLANS ARE TAKEN FROM THE BEST RECORDS AVAILABLE AND ARE NOT GUARANTEED TO BE ACCURATE. CONTRACTOR SHALL COORDINATE WITH ALL UTILITY COMPANIES TO FIELD VERIFY UTILITIES PRIOR TO BEGINNING CONSTRUCTION.

INTERIM REVIEW
DOCUMENT INCOMPLETE. NOT INTENDED FOR PERMIT, BIDDING OR CONSTRUCTION.
ENGINEER: JOHN A. TYLER
P.E. SERIAL NO: 105193
DATE: 10/31/2016

REVIEW AND APPROVAL
INTERIM REVIEW
DOCUMENT INCOMPLETE. NOT INTENDED FOR PERMIT, BIDDING OR CONSTRUCTION.
ENGINEER: JAMES A. LUTZ
P.E. SERIAL NO: 84722
DATE: 10/31/2016

NOT TO SCALE

REV. NO.	DATE	DESCRIPTION	BY



SAN ANTONIO | AUSTIN | HOUSTON | FORT WORTH | DALLAS
2000 NW LOOP 410 | SAN ANTONIO, TX 78213 | 210.375.9000
TBPPE FIRM REGISTRATION #470 | TBPPLS FIRM REGISTRATION #10028800



CURB RAMP PROGRAM

IH 35 SBFR
SIDEWALK SHEET H

SHEET 8 OF 15

SPECIAL NOTFS & DETAILS

FOR ENVIRONMENTAL REVIEW ONLY

LEGEND

- | | | |
|----------------------------|---------------------------|---|
| CAMERA POSITION | LIGHT POLE | LONGITUDINAL SLOPES MAY NOT EXCEED 5%. CROSS SLOPES MAY NOT EXCEED 2% |
| DRAINAGE FLOW ARROW | LUMINAIRE STANDARD | TRAFFIC FLOW |
| FLARE | MAIL BOX | TRAFFIC SIGNAL BOX |
| FIRE HYDRANT | MANHOLE | TRAFFIC SIGNAL CONTROLLER |
| GAS METER | NSPI NO SEPARATE PAY ITEM | TRAFFIC SIGNAL POLE |
| GAS VALVE | PEDESTAL SIGNAL POLE | TRANSFORMER |
| GROUND BOX | PI POINT | TREE/BUSHES |
| GUY ANCHOR | POWER/UTILITY POLE | UTILITY PEDESTAL/MARKER |
| IRRIGATION | R RAMP | UTILITY VAULT |
| JUNCTION BOX | RR RIPRAP (CONC) | WATER METER |
| L LANDING | SIGN | WATER VALVE |
| L1 LANDING (COMMON) | SODDING | |
| LS LEVEL SIDEWALK (2% MAX) | T TRANSITION | |