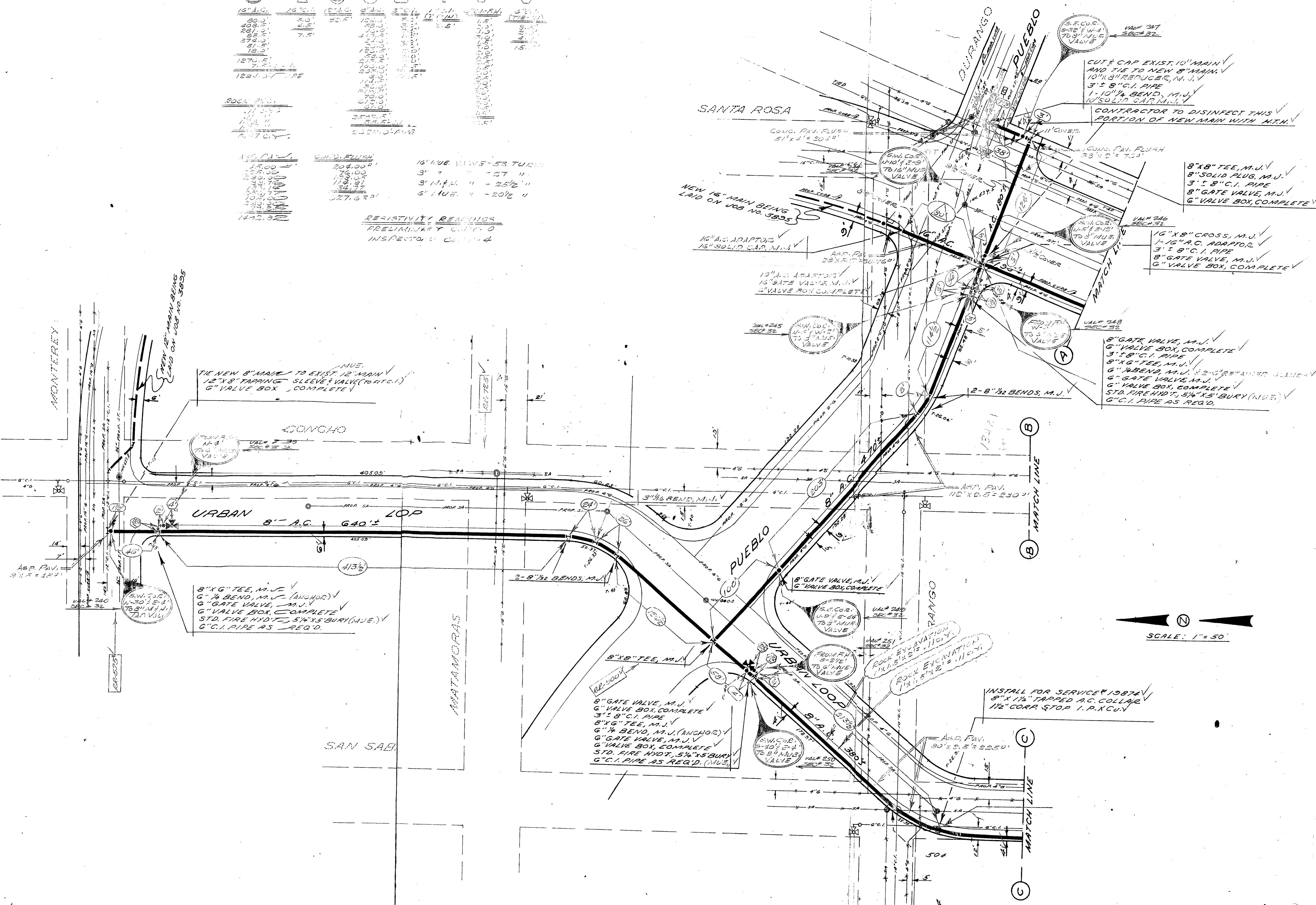


ITEM	DESCRIPTION	QUANTITY	UNIT
1	16" A.C. PIPE	1.00	LINEAL FEET
2	16" A.C. FITTING	1.00	PIECE
3	16" A.C. VALVE	1.00	PIECE
4	16" A.C. GATE VALVE	1.00	PIECE
5	16" A.C. VALVE BOX	1.00	PIECE
6	16" A.C. TEE	1.00	PIECE
7	16" A.C. BEND	1.00	PIECE
8	16" A.C. CROSS	1.00	PIECE
9	16" A.C. ADAPTOR	1.00	PIECE
10	16" A.C. PLUG	1.00	PIECE
11	16" A.C. GATE VALVE	1.00	PIECE
12	16" A.C. VALVE BOX	1.00	PIECE
13	16" A.C. TEE	1.00	PIECE
14	16" A.C. BEND	1.00	PIECE
15	16" A.C. CROSS	1.00	PIECE
16	16" A.C. ADAPTOR	1.00	PIECE
17	16" A.C. PLUG	1.00	PIECE
18	16" A.C. GATE VALVE	1.00	PIECE
19	16" A.C. VALVE BOX	1.00	PIECE
20	16" A.C. TEE	1.00	PIECE
21	16" A.C. BEND	1.00	PIECE
22	16" A.C. CROSS	1.00	PIECE
23	16" A.C. ADAPTOR	1.00	PIECE
24	16" A.C. PLUG	1.00	PIECE
25	16" A.C. GATE VALVE	1.00	PIECE
26	16" A.C. VALVE BOX	1.00	PIECE
27	16" A.C. TEE	1.00	PIECE
28	16" A.C. BEND	1.00	PIECE
29	16" A.C. CROSS	1.00	PIECE
30	16" A.C. ADAPTOR	1.00	PIECE
31	16" A.C. PLUG	1.00	PIECE
32	16" A.C. GATE VALVE	1.00	PIECE
33	16" A.C. VALVE BOX	1.00	PIECE
34	16" A.C. TEE	1.00	PIECE
35	16" A.C. BEND	1.00	PIECE
36	16" A.C. CROSS	1.00	PIECE
37	16" A.C. ADAPTOR	1.00	PIECE
38	16" A.C. PLUG	1.00	PIECE
39	16" A.C. GATE VALVE	1.00	PIECE
40	16" A.C. VALVE BOX	1.00	PIECE
41	16" A.C. TEE	1.00	PIECE
42	16" A.C. BEND	1.00	PIECE
43	16" A.C. CROSS	1.00	PIECE
44	16" A.C. ADAPTOR	1.00	PIECE
45	16" A.C. PLUG	1.00	PIECE
46	16" A.C. GATE VALVE	1.00	PIECE
47	16" A.C. VALVE BOX	1.00	PIECE
48	16" A.C. TEE	1.00	PIECE
49	16" A.C. BEND	1.00	PIECE
50	16" A.C. CROSS	1.00	PIECE
51	16" A.C. ADAPTOR	1.00	PIECE
52	16" A.C. PLUG	1.00	PIECE
53	16" A.C. GATE VALVE	1.00	PIECE
54	16" A.C. VALVE BOX	1.00	PIECE
55	16" A.C. TEE	1.00	PIECE
56	16" A.C. BEND	1.00	PIECE
57	16" A.C. CROSS	1.00	PIECE
58	16" A.C. ADAPTOR	1.00	PIECE
59	16" A.C. PLUG	1.00	PIECE
60	16" A.C. GATE VALVE	1.00	PIECE
61	16" A.C. VALVE BOX	1.00	PIECE
62	16" A.C. TEE	1.00	PIECE
63	16" A.C. BEND	1.00	PIECE
64	16" A.C. CROSS	1.00	PIECE
65	16" A.C. ADAPTOR	1.00	PIECE
66	16" A.C. PLUG	1.00	PIECE
67	16" A.C. GATE VALVE	1.00	PIECE
68	16" A.C. VALVE BOX	1.00	PIECE
69	16" A.C. TEE	1.00	PIECE
70	16" A.C. BEND	1.00	PIECE
71	16" A.C. CROSS	1.00	PIECE
72	16" A.C. ADAPTOR	1.00	PIECE
73	16" A.C. PLUG	1.00	PIECE
74	16" A.C. GATE VALVE	1.00	PIECE
75	16" A.C. VALVE BOX	1.00	PIECE
76	16" A.C. TEE	1.00	PIECE
77	16" A.C. BEND	1.00	PIECE
78	16" A.C. CROSS	1.00	PIECE
79	16" A.C. ADAPTOR	1.00	PIECE
80	16" A.C. PLUG	1.00	PIECE
81	16" A.C. GATE VALVE	1.00	PIECE
82	16" A.C. VALVE BOX	1.00	PIECE
83	16" A.C. TEE	1.00	PIECE
84	16" A.C. BEND	1.00	PIECE
85	16" A.C. CROSS	1.00	PIECE
86	16" A.C. ADAPTOR	1.00	PIECE
87	16" A.C. PLUG	1.00	PIECE
88	16" A.C. GATE VALVE	1.00	PIECE
89	16" A.C. VALVE BOX	1.00	PIECE
90	16" A.C. TEE	1.00	PIECE
91	16" A.C. BEND	1.00	PIECE
92	16" A.C. CROSS	1.00	PIECE
93	16" A.C. ADAPTOR	1.00	PIECE
94	16" A.C. PLUG	1.00	PIECE
95	16" A.C. GATE VALVE	1.00	PIECE
96	16" A.C. VALVE BOX	1.00	PIECE
97	16" A.C. TEE	1.00	PIECE
98	16" A.C. BEND	1.00	PIECE
99	16" A.C. CROSS	1.00	PIECE
100	16" A.C. ADAPTOR	1.00	PIECE

RESISTIVITY READINGS  
PRELIMINARY CORRECTED  
INSPECTOR'S COPY



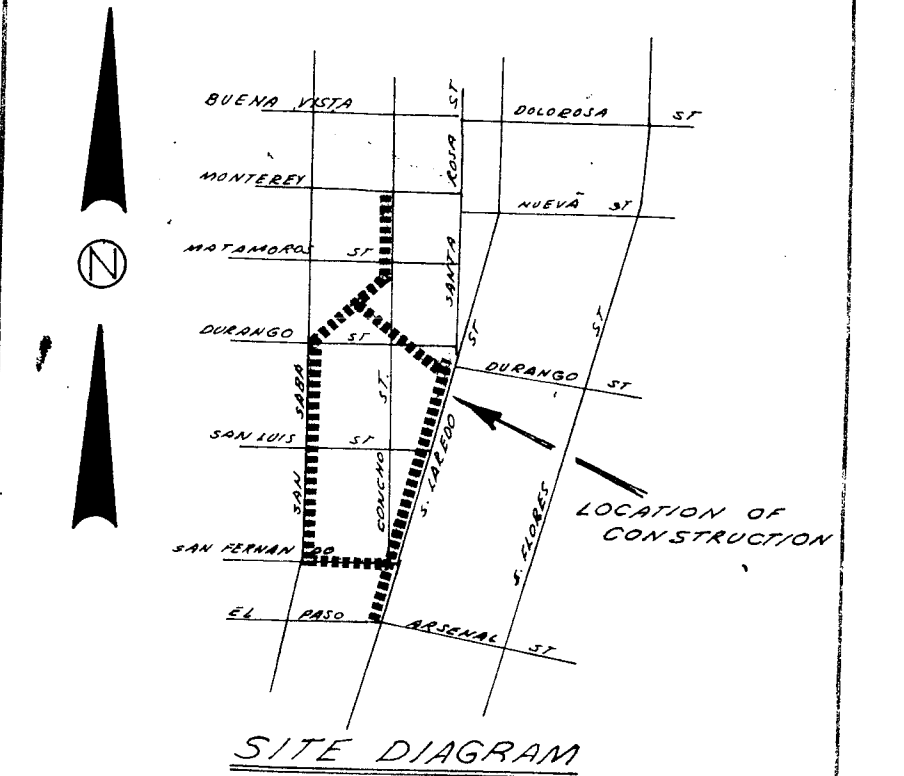
CONTRACT NO.	3918
LOCATION	
DEVELOPER	C.W.B.
ACCOUNT NUMBERS	
4	MAIN INSTALLATION
74	MAIN REMOVAL OR ABANDONMENT
6	FIRE HYDRANT INSTALLATION
76	FIRE HYDRANT REMOVAL
	SERVICE REPLACEMENT (RELAY)
77	SERVICE REMOVAL OR ABANDONMENT

CITY WATER BOARD  
SAN ANTONIO, TEXAS  
URBAN RENEWAL  
PROJECT I - PHASE 2  
CODE E-810 BUDGET PROJECT # 34 E 37  
DRAWN B. Smith CHECKED J. Hill  
SUBMITTED R. Smith 12-7-84  
APPROVED R. Smith 12-7-84  
DATE 12 October 1984  
MAP NO. 229, 287, 288 SECTION NO. 31, 32

NO.	REVISION	DRAWN	APPROVED	DATE

NOTE:  
EMBED ALL C.I. MAINS AND FITTINGS IN SILICA SAND IN ACCORDANCE WITH CITY WATER BOARD SPECIFICATIONS.

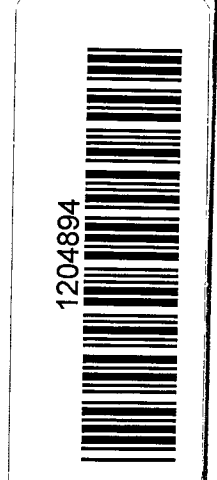
LEGEND:  
PROPOSED WATER MAIN  
EXISTING WATER MAIN  
GAS MAINS  
SANITARY SEWERS  
STORM SEWERS  
UTILITY POLE LINE  
ELECTRIC CABLE  
TELEPHONE CABLE  
PROPOSED UTILITIES  
UTILITIES TO BE ABANDON



MAKING CHLORINATION BY S.W.B.  
20

- NOTES:
1. TELE. CONDUIT IN AREA PHONE MISS HAWLEY, CA 3-9972, FOR LOCATION
  2. CURBS REMOVED IN THE PROCESS OF WATER MAIN CONSTRUCTION WILL NOT BE REPLACED. ALL PAVEMENT SHALL BE REPLACED.
  3. EXACT LOCATIONS OF FIRE HYDRANTS TO BE DETERMINED IN THE FIELD.

SCALE: 1" = 50'



CONTRACT NO. _____ LOCATION _____ DEVELOPER <u>C.W.B.</u>		JOB NO. <u>3918</u> SHEET <u>2</u> OF <u>3</u> <b>CITY WATER BOARD</b> SAN ANTONIO, TEXAS <b>URBAN RENEWAL</b> <b>PROJECT I - PHASE 2</b>	
ACCOUNT NUMBERS 4. MAIN INSTALLATION 74. MAIN REMOVAL OR ABANDONMENT 6. FIRE HYDRANT INSTALLATION 76. FIRE HYDRANT REMOVAL SERVICE REPLACEMENT (RELAY) 77. SERVICE REMOVAL OR ABANDONMENT		CODE <u>E-810</u> BUDGET PROJECT <u>#34637</u> DRAWN <u>B. Smith</u> CHECKED <u>EL</u> SUBMITTED <u>10-9-64</u> APPROVED <u>12-0-64</u> DATE <u>12-0-64</u>	
MAP NO. _____ SECTION NO. _____		REVISIONS NO. REVISION DRAWN APPROVED DATE	
NOTE: EMBED ALL C.I. MAINS AND FITTINGS IN SILICA SAND IN ACCORDANCE WITH CITY WATER BOARD SPECIFICATIONS.			

**LEGEND**

PROP. WATER MAIN	6" C.I.
EXIST. WATER MAIN	6" C.I.
GAS MAINS	4" G
SANITARY SEWERS	3" S
STORM SEWERS	PROP.
UTILITY POLE LINE	NOT SHOWN
ELECTRIC CABLE	NONE
TELEPHONE CABLE	NONE
PROPOSED UTILITIES	PROP.
UTILITIES TO BE ABANDON	---

