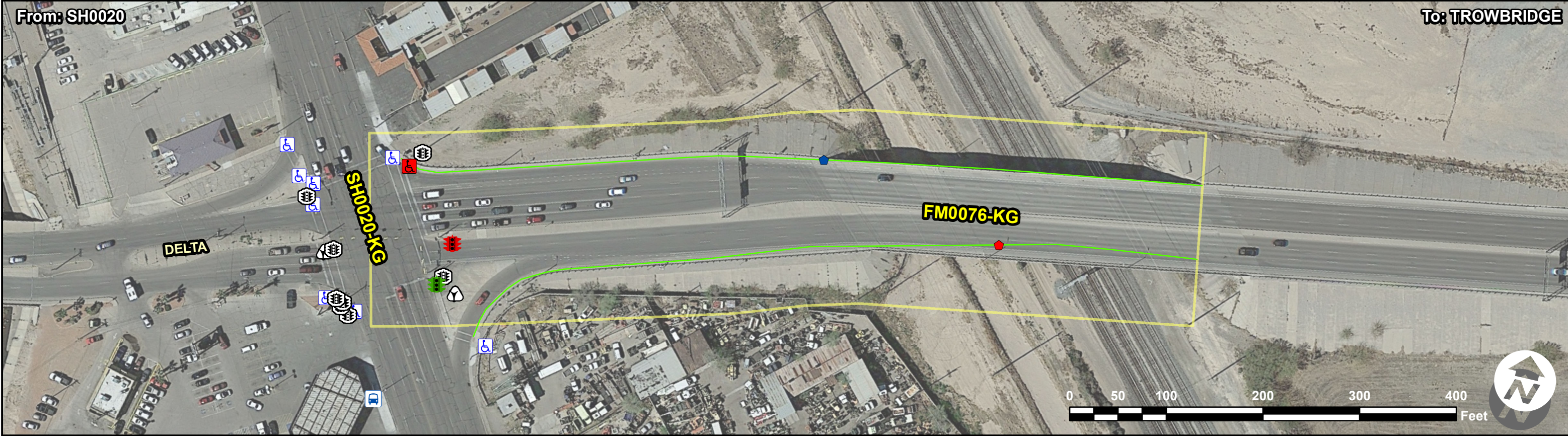


Access Compliance Report - Public Rights-of-Way  
(Corridor: Sidewalk & Intersection Items)



ADA Survey Summary			
Item	Description	Quantity	Unit
1	Discontinuity Displacement <= 1"	0	EA
2	Discontinuity Displacement > 1"	1	EA
3	Discontinuity Opening > 0.5"	0	EA
4	Poor Surface Condition	0	SY
5	Utility Obstruction	1	EA
6	Traffic Signal Obstruction	0	EA
7	Sign Obstruction	0	EA
8	Temp/Private Obstruction	0	EA
9	Low Vegetative Obstruction	0	EA
10	Overhead Vegetative Obstruction	0	EA
11	Other Obstruction*	0	EA
12	Commercial Entrance	0	LF
13	Residential Entrance	0	LF
14	Total Sidewalk Length Assessed	1614	LF
15	Average Sidewalk Width	30	IN
16	Curb Ramps In Page Report	1	EA
17	Island Curb Cuts In Page Report	0	EA
18	Signal Ped Button Posts in Page Report	2	EA
19	Bus Pads In Page Report	0	EA
20	Missing Sidewalk/Gaps in Connectivity	0	LF
21	Buried/Narrow Sidewalk	0	LF
22	Missing Sidewalk Connection to Bus Pads	0	LF
23	No Sidewalk Observed	0	LF
24	Corridor Severity Score	87.04	

Inventory	
Displacements_Inventory	
◆	Displacements Less Than 1"
◆	Displacements 1" or Greater
■	Poor Surface Condition
◆	Sidewalk Joint Gap
Obstructions_Inventory	
○	Utility Obstruction
◆	Traffic Signal Obstruction
◆	Sign Obstruction
◆	Temporary Obstruction
◆	Overhead Vegetation
◆	Low Vegetation
◆	Other Obstruction
■	Residential Driveway
■	Commercial Driveway
—	Not Surveyed
—	Missing Sidewalk
—	Missing Bus Connection
—	Buried/Narrow Sidewalk
—	See Feature Comments
—	Sidewalk Collection Path
♿	Curb Ramps in Adjacent Corridor
♿	Island Curb Cuts in Adjacent Corridor
♿	Signals in Adjacent Corridors
♿	Bus Stop Pads In Adjacent Corridor
Running Slope (Aligned)	
[ Not Costed ]	
—	5.1 – 8.3%
—	8.4 – 10.0%
—	10.1 – 12.5%
—	> 12.5%

ADA Compliance Cost Estimate **					
Item	Description	Quantity	Unit	Unit Price	Item Cost
1	Discontinuity Displacement <= 1"	0	EA	\$190.00	\$ 0.00
2	Discontinuity Displacement > 1"	1	EA	\$690.00	\$ 690.00
3	Discontinuity Opening > 0.5"	0	EA	\$90.00	\$ 0.00
4	Poor Surface Condition	0	SY	\$90.00	\$ 0.00
5	Utility Obstruction	1	EA	\$6210.00	\$ 6210.00
6	Traffic Signal Obstruction	0	EA	\$2490.00	\$ 0.00
7	Sign Obstruction	0	EA	\$1870.00	\$ 0.00
8	Low Vegetative Obstruction	0	EA	\$190.00	\$ 0.00
9	Overhead Vegetative Obstruction	0	EA	\$380.00	\$ 0.00
10	Other Obstruction	0	EA	\$1870.00	\$ 0.00
11	Commercial Entrance	0	LF	\$440.00	\$ 0.00
12	Residential Entrance	0	LF	\$370.00	\$ 0.00
13	Running Slope Violation	0	SY	\$90.00	\$ 0.00
14	Cross Slope Violation	0	SY	\$90.00	\$ 0.00
15	Running and Cross Slope violations	0	SY	\$90.00	\$ 0.00
16	Non-Compliant Curb Ramps and Total Cost*	1	EA	VARIES	\$ 2484.00
17	Non-Compliant Island Curb Cuts and Total Cost*	0	EA	VARIES	\$ 0.00
18	Non-Compliant Signal Ped Button Posts and Total Cost*	1	EA	VARIES	\$ 6583.00
19	Non-Compliant Bus Pads and Total Cost*	0	EA	VARIES	\$ 0.00
20	Missing Sidewalk/Gap in Connectivity	0	SY	\$70.00	\$ 0.00
21	Buried Sidewalk	0	SY	\$90.00	\$ 0.00
22	Missing Sidewalk Connection to Bus Pads	0	SY	\$70.00	\$ 0.00
Total:					\$ 15967.00

\* Note: Some items combined for display. See Unit Cost Table for specific Unit Costs for each type of obstruction, curb ramp, island, signal ped button post, or bus pad replacement. Missing sidewalk/gaps in connectivity reported together in compliance report and are separate in the GIS layers."

\*\* Note: ADA pedestrian issues have been identified and quantified in the ADA Survey Summary. There are instances where multiple issues can be resolved with a single corrective measure. The ADA Compliance Cost Estimate reflects the best estimation of quantities and cost to resolve all identified ADA issues.

Compliance	
Displacements	
✱	Displacements 1" or Greater
✱	Displacements Less Than 1"
■	Poor Surface Condition
✱	Sidewalk Joint Gap
Obstructions	
●	Utility Obstruction
●	Traffic Signal Obstruction
●	Sign Obstruction
○	Temp or Private Obstruction
●	Overhead Vegetation
●	Low Vegetation
●	Other Obstruction
+	Driveway Violation
Running Slope (Deviated)	
[ Costed ]	
—	5.1 – 8.3%
—	8.4 – 10.0%
—	10.1 – 12.5%
—	> 12.5%
Cross Slope	
—	2 - 3%
—	3.01 - 4%
—	4.01 - 7%
—	> 7%
Visual Survey Items	
●	Cross Slope
●	Discontinuity
■	Low Vegetation
■	Other Obstruction
■	Overhead Vegetation
■	Poor Surface Condition
■	Private Obstruction
■	Sign Obstruction
■	Traffic Signal Obstruction
■	Utility Obstruction
■	Commercial Driveway
■	Residential Driveway
Overall Compliance	
⚠	Non-Compliant Signal
⚠	Compliant Signal
⚠	Non-Compliant Bus Stop
⚠	Compliant Bus Stop
⚠	Non-Compliant Curb Ramp
⚠	Compliant Curb Ramp
⚠	Non-Compliant Curb Cut
⚠	Compliant Curb Cut
Sidewalk Discontinuity	
—	Not Surveyed
—	Missing Sidewalk
—	Missing Bus Connection
—	Buried/Narrow Sidewalk
—	See Feature Comments



Access Compliance Report - Public Rights-of-Way  
(Corridor: Sidewalk & Intersection Items)



ADA Survey Summary			
Item	Description	Quantity	Unit
1	Discontinuity Displacement <= 1"	0	EA
2	Discontinuity Displacement > 1"	0	EA
3	Discontinuity Opening > 0.5"	0	EA
4	Poor Surface Condition	30	SY
5	Utility Obstruction	0	EA
6	Traffic Signal Obstruction	0	EA
7	Sign Obstruction	0	EA
8	Temp/Private Obstruction	0	EA
9	Low Vegetative Obstruction	0	EA
10	Overhead Vegetative Obstruction	0	EA
11	Other Obstruction*	0	EA
12	Commercial Entrance	25	LF
13	Residential Entrance	0	LF
14	Total Sidewalk Length Assessed	223	LF
15	Average Sidewalk Width	64	IN
16	Curb Ramps In Page Report	3	EA
17	Island Curb Cuts In Page Report	0	EA
18	Signal Ped Button Posts in Page Report	0	EA
19	Bus Pads In Page Report	0	EA
20	Missing Sidewalk/Gaps in Connectivity	0	LF
21	Buried/Narrow Sidewalk	0	LF
22	Missing Sidewalk Connection to Bus Pads	0	LF
23	No Sidewalk Observed	0	LF
24	Corridor Severity Score	28.39	

Inventory	
Displacements_Inventory	
◆	Displacements Less Than 1"
◆	Displacements 1" or Greater
■	Poor Surface Condition
◆	Sidewalk Joint Gap
Obstructions_Inventory	
○	Utility Obstruction
◆	Traffic Signal Obstruction
◆	Sign Obstruction
◆	Temporary Obstruction
◆	Overhead Vegetation
◆	Low Vegetation
◆	Other Obstruction
■	Residential Driveway
■	Commercial Driveway
—	Not Surveyed
—	Missing Sidewalk
—	Missing Bus Connection
—	Buried/Narrow Sidewalk
—	See Feature Comments
—	Sidewalk Collection Path
♿	Curb Ramps in Adjacent Corridor
♿	Island Curb Cuts in Adjacent Corridor
♿	Signals in Adjacent Corridors
♿	Bus Stop Pads In Adjacent Corridor
Running Slope (Aligned)	
[ Not Costed ]	
—	5.1 – 8.3%
—	8.4 – 10.0%
—	10.1 – 12.5%
—	> 12.5%

ADA Compliance Cost Estimate **					
Item	Description	Quantity	Unit	Unit Price	Item Cost
1	Discontinuity Displacement <= 1"	0	EA	\$190.00	\$ 0.00
2	Discontinuity Displacement > 1"	0	EA	\$690.00	\$ 0.00
3	Discontinuity Opening > 0.5"	0	EA	\$90.00	\$ 0.00
4	Poor Surface Condition	30	SY	\$90.00	\$ 2667.00
5	Utility Obstruction	0	EA	\$6210.00	\$ 0.00
6	Traffic Signal Obstruction	0	EA	\$2490.00	\$ 0.00
7	Sign Obstruction	0	EA	\$1870.00	\$ 0.00
8	Low Vegetative Obstruction	0	EA	\$190.00	\$ 0.00
9	Overhead Vegetative Obstruction	0	EA	\$380.00	\$ 0.00
10	Other Obstruction	0	EA	\$1870.00	\$ 0.00
11	Commercial Entrance	25	LF	\$440.00	\$ 11000.00
12	Residential Entrance	0	LF	\$370.00	\$ 0.00
13	Running Slope Violation	0	SY	\$90.00	\$ 0.00
14	Cross Slope Violation	0	SY	\$90.00	\$ 0.00
15	Running and Cross Slope violations	0	SY	\$90.00	\$ 0.00
16	Non-Compliant Curb Ramps and Total Cost*	3	EA	VARIES	\$ 6707.00
17	Non-Compliant Island Curb Cuts and Total Cost*	0	EA	VARIES	\$ 0.00
18	Non-Compliant Signal Ped Button Posts and Total Cost*	0	EA	VARIES	\$ 0.00
19	Non-Compliant Bus Pads and Total Cost*	0	EA	VARIES	\$ 0.00
20	Missing Sidewalk/Gap in Connectivity	0	SY	\$70.00	\$ 0.00
21	Buried Sidewalk	0	SY	\$90.00	\$ 0.00
22	Missing Sidewalk Connection to Bus Pads	0	SY	\$70.00	\$ 0.00
Total:					\$ 20373.00

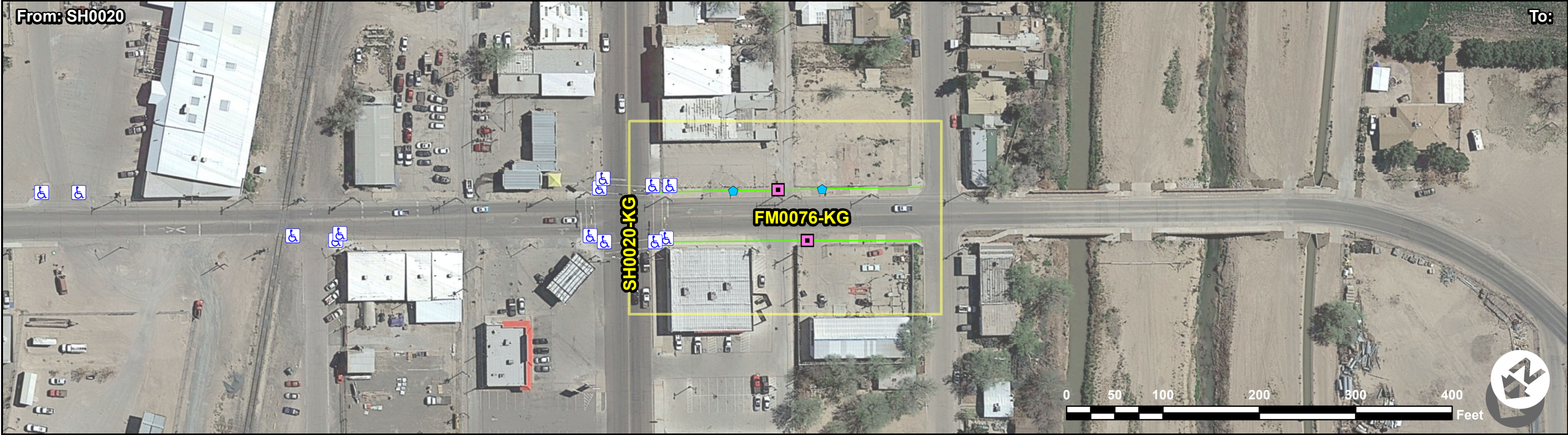
\* Note: Some items combined for display. See Unit Cost Table for specific Unit Costs for each type of obstruction, curb ramp, island, signal ped button post, or bus pad replacement. Missing sidewalk/gaps in connectivity reported together in compliance report and are separate in the GIS layers."

\*\* Note: ADA pedestrian issues have been identified and quantified in the ADA Survey Summary. There are instances where multiple issues can be resolved with a single corrective measure. The ADA Compliance Cost Estimate reflects the best estimation of quantities and cost to resolve all identified ADA issues.

Compliance	
Displacements	
◆	Displacements 1" or Greater
◆	Displacements Less Than 1"
■	Poor Surface Condition
◆	Sidewalk Joint Gap
Obstructions	
●	Utility Obstruction
◆	Traffic Signal Obstruction
●	Sign Obstruction
○	Temp or Private Obstruction
●	Overhead Vegetation
●	Low Vegetation
●	Other Obstruction
+	Driveway Violation
Running Slope (Deviated)	
[ Costed ]	
—	5.1 – 8.3%
—	8.4 – 10.0%
—	10.1 – 12.5%
—	> 12.5%
Cross Slope	
—	2 - 3%
—	3.01 - 4%
—	4.01 - 7%
—	> 7%
Visual Survey Items	
◆	Cross Slope
◆	Discontinuity
■	Low Vegetation
■	Other Obstruction
■	Overhead Vegetation
◆	Poor Surface Condition
◆	Private Obstruction
◆	Sign Obstruction
◆	Traffic Signal Obstruction
◆	Utility Obstruction
■	Commercial Driveway
■	Residential Driveway
Overall Compliance	
◆	Non-Compliant Signal
◆	Compliant Signal
◆	Non-Compliant Bus Stop
◆	Compliant Bus Stop
◆	Non-Compliant Curb Ramp
◆	Compliant Curb Ramp
◆	Non-Compliant Curb Cut
◆	Compliant Curb Cut
Sidewalk Discontinuity	
—	Not Surveyed
—	Missing Sidewalk
—	Missing Bus Connection
—	Buried/Narrow Sidewalk
—	See Feature Comments



Access Compliance Report - Public Rights-of-Way  
(Corridor: Sidewalk & Intersection Items)



ADA Survey Summary			
Item	Description	Quantity	Unit
1	Discontinuity Displacement <= 1"	0	EA
2	Discontinuity Displacement > 1"	0	EA
3	Discontinuity Opening > 0.5"	0	EA
4	Poor Surface Condition	30	SY
5	Utility Obstruction	0	EA
6	Traffic Signal Obstruction	0	EA
7	Sign Obstruction	0	EA
8	Temp/Private Obstruction	0	EA
9	Low Vegetative Obstruction	0	EA
10	Overhead Vegetative Obstruction	0	EA
11	Other Obstruction*	0	EA
12	Commercial Entrance	50	LF
13	Residential Entrance	0	LF
14	Total Sidewalk Length Assessed	550	LF
15	Average Sidewalk Width	68	IN
16	Curb Ramps In Page Report	0	EA
17	Island Curb Cuts In Page Report	0	EA
18	Signal Ped Button Posts in Page Report	0	EA
19	Bus Pads In Page Report	0	EA
20	Missing Sidewalk/Gaps in Connectivity	0	LF
21	Buried/Narrow Sidewalk	0	LF
22	Missing Sidewalk Connection to Bus Pads	0	LF
23	No Sidewalk Observed	0	LF
24	Corridor Severity Score	16.94	

Inventory	
Displacements_Inventory	
◆	Displacements Less Than 1"
◆	Displacements 1" or Greater
■	Poor Surface Condition
◆	Sidewalk Joint Gap
Obstructions_Inventory	
○	Utility Obstruction
◆	Traffic Signal Obstruction
◆	Sign Obstruction
◇	Temporary Obstruction
◆	Overhead Vegetation
◆	Low Vegetation
◆	Other Obstruction
■	Residential Driveway
■	Commercial Driveway
—	Not Surveyed
—	Missing Sidewalk
—	Missing Bus Connection
—	Buried/Narrow Sidewalk
—	See Feature Comments
—	Sidewalk Collection Path
♿	Curb Ramps in Adjacent Corridor
♿	Island Curb Cuts in Adjacent Corridor
♿	Signals in Adjacent Corridors
♿	Bus Stop Pads In Adjacent Corridor
Running Slope (Aligned)	
[ Not Costed ]	
—	5.1 – 8.3%
—	8.4 – 10.0%
—	10.1 – 12.5%
—	> 12.5%

ADA Compliance Cost Estimate **					
Item	Description	Quantity	Unit	Unit Price	Item Cost
1	Discontinuity Displacement <= 1"	0	EA	\$190.00	\$ 0.00
2	Discontinuity Displacement > 1"	0	EA	\$690.00	\$ 0.00
3	Discontinuity Opening > 0.5"	0	EA	\$90.00	\$ 0.00
4	Poor Surface Condition	30	SY	\$90.00	\$ 2667.00
5	Utility Obstruction	0	EA	\$6210.00	\$ 0.00
6	Traffic Signal Obstruction	0	EA	\$2490.00	\$ 0.00
7	Sign Obstruction	0	EA	\$1870.00	\$ 0.00
8	Low Vegetative Obstruction	0	EA	\$190.00	\$ 0.00
9	Overhead Vegetative Obstruction	0	EA	\$380.00	\$ 0.00
10	Other Obstruction	0	EA	\$1870.00	\$ 0.00
11	Commercial Entrance	50	LF	\$440.00	\$ 22000.00
12	Residential Entrance	0	LF	\$370.00	\$ 0.00
13	Running Slope Violation	0	SY	\$90.00	\$ 0.00
14	Cross Slope Violation	0	SY	\$90.00	\$ 0.00
15	Running and Cross Slope violations	0	SY	\$90.00	\$ 0.00
16	Non-Compliant Curb Ramps and Total Cost*	0	EA	VARIES	\$ 0.00
17	Non-Compliant Island Curb Cuts and Total Cost*	0	EA	VARIES	\$ 0.00
18	Non-Compliant Signal Ped Button Posts and Total Cost*	0	EA	VARIES	\$ 0.00
19	Non-Compliant Bus Pads and Total Cost*	0	EA	VARIES	\$ 0.00
20	Missing Sidewalk/Gap in Connectivity	0	SY	\$70.00	\$ 0.00
21	Buried Sidewalk	0	SY	\$90.00	\$ 0.00
22	Missing Sidewalk Connection to Bus Pads	0	SY	\$70.00	\$ 0.00
Total:					\$ 24667.00

\* Note: Some items combined for display. See Unit Cost Table for specific Unit Costs for each type of obstruction, curb ramp, island, signal ped button post, or bus pad replacement. Missing sidewalk/gaps in connectivity reported together in compliance report and are separate in the GIS layers."

\*\* Note: ADA pedestrian issues have been identified and quantified in the ADA Survey Summary. There are instances where multiple issues can be resolved with a single corrective measure. The ADA Compliance Cost Estimate reflects the best estimation of quantities and cost to resolve all identified ADA issues.

Compliance	
Displacements	
◆	Displacements 1" or Greater
◆	Displacements Less Than 1"
■	Poor Surface Condition
◆	Sidewalk Joint Gap
Obstructions	
●	Utility Obstruction
◆	Traffic Signal Obstruction
●	Sign Obstruction
○	Temp or Private Obstruction
●	Overhead Vegetation
●	Low Vegetation
●	Other Obstruction
+	Driveway Violation
Running Slope (Deviated)	
[ Costed ]	
—	5.1 – 8.3%
—	8.4 – 10.0%
—	10.1 – 12.5%
—	> 12.5%
Cross Slope	
—	2 - 3%
—	3.01 - 4%
—	4.01 - 7%
—	> 7%
Visual Survey Items	
◆	Cross Slope
◆	Discontinuity
■	Low Vegetation
■	Other Obstruction
■	Overhead Vegetation
◆	Poor Surface Condition
◆	Private Obstruction
◆	Sign Obstruction
◆	Traffic Signal Obstruction
◆	Utility Obstruction
■	Commercial Driveway
■	Residential Driveway
Overall Compliance	
⚠	Non-Compliant Signal
⚠	Compliant Signal
⚠	Non-Compliant Bus Stop
⚠	Compliant Bus Stop
⚠	Non-Compliant Curb Ramp
⚠	Compliant Curb Ramp
⚠	Non-Compliant Curb Cut
⚠	Compliant Curb Cut
Sidewalk Discontinuity	
—	Not Surveyed
—	Missing Sidewalk
—	Missing Bus Connection
—	Buried/Narrow Sidewalk
—	See Feature Comments



Access Compliance Report - Public Rights-of-Way  
(Corridor: Sidewalk & Intersection Items)



ADA Survey Summary			
Item	Description	Quantity	Unit
1	Discontinuity Displacement <= 1"	0	EA
2	Discontinuity Displacement > 1"	0	EA
3	Discontinuity Opening > 0.5"	0	EA
4	Poor Surface Condition	0	SY
5	Utility Obstruction	5	EA
6	Traffic Signal Obstruction	0	EA
7	Sign Obstruction	0	EA
8	Temp/Private Obstruction	0	EA
9	Low Vegetative Obstruction	0	EA
10	Overhead Vegetative Obstruction	0	EA
11	Other Obstruction*	0	EA
12	Commercial Entrance	0	LF
13	Residential Entrance	0	LF
14	Total Sidewalk Length Assessed	583	LF
15	Average Sidewalk Width	54	IN
16	Curb Ramps In Page Report	2	EA
17	Island Curb Cuts In Page Report	0	EA
18	Signal Ped Button Posts in Page Report	1	EA
19	Bus Pads In Page Report	0	EA
20	Missing Sidewalk/Gaps in Connectivity	0	LF
21	Buried/Narrow Sidewalk	0	LF
22	Missing Sidewalk Connection to Bus Pads	0	LF
23	No Sidewalk Observed	0	LF
24	Corridor Severity Score	46.99	

Inventory	
Displacements_Inventory	
	Displacements Less Than 1"
	Displacements 1" or Greater
	Poor Surface Condition
	Sidewalk Joint Gap
Obstructions_Inventory	
	Utility Obstruction
	Traffic Signal Obstruction
	Sign Obstruction
	Temporary Obstruction
	Overhead Vegetation
	Low Vegetation
	Other Obstruction
	Residential Driveway
	Commercial Driveway
	Not Surveyed
	Missing Sidewalk
	Missing Bus Connection
	Buried/Narrow Sidewalk
	See Feature Comments
	Sidewalk Collection Path
	Curb Ramps in Adjacent Corridor
	Island Curb Cuts in Adjacent Corridor
	Signals in Adjacent Corridors
	Bus Stop Pads In Adjacent Corridor
Running Slope (Aligned)	
[ Not Costed ]	
	5.1 – 8.3%
	8.4 – 10.0%
	10.1 – 12.5%
	> 12.5%

ADA Compliance Cost Estimate **					
Item	Description	Quantity	Unit	Unit Price	Item Cost
1	Discontinuity Displacement <= 1"	0	EA	\$190.00	\$ 0.00
2	Discontinuity Displacement > 1"	0	EA	\$690.00	\$ 0.00
3	Discontinuity Opening > 0.5"	0	EA	\$90.00	\$ 0.00
4	Poor Surface Condition	0	SY	\$90.00	\$ 0.00
5	Utility Obstruction	5	EA	\$6210.00	\$ 31050.00
6	Traffic Signal Obstruction	0	EA	\$2490.00	\$ 0.00
7	Sign Obstruction	0	EA	\$1870.00	\$ 0.00
8	Low Vegetative Obstruction	0	EA	\$190.00	\$ 0.00
9	Overhead Vegetative Obstruction	0	EA	\$380.00	\$ 0.00
10	Other Obstruction	0	EA	\$1870.00	\$ 0.00
11	Commercial Entrance	0	LF	\$440.00	\$ 0.00
12	Residential Entrance	0	LF	\$370.00	\$ 0.00
13	Running Slope Violation	0	SY	\$90.00	\$ 0.00
14	Cross Slope Violation	0	SY	\$90.00	\$ 0.00
15	Running and Cross Slope violations	0	SY	\$90.00	\$ 0.00
16	Non-Compliant Curb Ramps and Total Cost*	2	EA	VARIES	\$ 3167.00
17	Non-Compliant Island Curb Cuts and Total Cost*	0	EA	VARIES	\$ 0.00
18	Non-Compliant Signal Ped Button Posts and Total Cost* 1	1	EA	VARIES	\$ 6583.00
19	Non-Compliant Bus Pads and Total Cost*	0	EA	VARIES	\$ 0.00
20	Missing Sidewalk/Gap in Connectivity	0	SY	\$70.00	\$ 0.00
21	Buried Sidewalk	0	SY	\$90.00	\$ 0.00
22	Missing Sidewalk Connection to Bus Pads	0	SY	\$70.00	\$ 0.00
Total:					\$ 40800.00

\* Note: Some items combined for display. See Unit Cost Table for specific Unit Costs for each type of obstruction, curb ramp, island, signal ped button post, or bus pad replacement. Missing sidewalk/gaps in connectivity reported together in compliance report and are separate in the GIS layers."

\*\* Note: ADA pedestrian issues have been identified and quantified in the ADA Survey Summary. There are instances where multiple issues can be resolved with a single corrective measure. The ADA Compliance Cost Estimate reflects the best estimation of quantities and cost to resolve all identified ADA issues.

Compliance	
Displacements	
	Displacements 1" or Greater
	Displacements Less Than 1"
	Poor Surface Condition
	Sidewalk Joint Gap
Obstructions	
	Utility Obstruction
	Traffic Signal Obstruction
	Sign Obstruction
	Temp or Private Obstruction
	Overhead Vegetation
	Low Vegetation
	Other Obstruction
	Driveway Violation
Running Slope (Deviated)	
[ Costed ]	
	5.1 – 8.3%
	8.4 – 10.0%
	10.1 – 12.5%
	> 12.5%
Cross Slope	
	2 - 3%
	3.01 - 4%
	4.01 - 7%
	> 7%
Visual Survey Items	
	Cross Slope
	Discontinuity
	Low Vegetation
	Other Obstruction
	Overhead Vegetation
	Poor Surface Condition
	Private Obstruction
	Sign Obstruction
	Traffic Signal Obstruction
	Utility Obstruction
	Commercial Driveway
	Residential Driveway
Overall Compliance	
	Non-Compliant Signal
	Compliant Signal
	Non-Compliant Bus Stop
	Compliant Bus Stop
	Non-Compliant Curb Ramp
	Compliant Curb Ramp
	Non-Compliant Curb Cut
	Compliant Curb Cut
Sidewalk Discontinuity	
	Not Surveyed
	Missing Sidewalk
	Missing Bus Connection
	Buried/Narrow Sidewalk
	See Feature Comments



Access Compliance Report - Public Rights-of-Way  
(Corridor: Sidewalk & Intersection Items)



ADA Survey Summary			
Item	Description	Quantity	Unit
1	Discontinuity Displacement <= 1"	0	EA
2	Discontinuity Displacement > 1"	0	EA
3	Discontinuity Opening > 0.5"	0	EA
4	Poor Surface Condition	0	SY
5	Utility Obstruction	0	EA
6	Traffic Signal Obstruction	0	EA
7	Sign Obstruction	0	EA
8	Temp/Private Obstruction	0	EA
9	Low Vegetative Obstruction	0	EA
10	Overhead Vegetative Obstruction	0	EA
11	Other Obstruction*	0	EA
12	Commercial Entrance	0	LF
13	Residential Entrance	0	LF
14	Total Sidewalk Length Assessed	0	LF
15	Average Sidewalk Width	0	IN
16	Curb Ramps In Page Report	3	EA
17	Island Curb Cuts In Page Report	0	EA
18	Signal Ped Button Posts in Page Report	2	EA
19	Bus Pads In Page Report	0	EA
20	Missing Sidewalk/Gaps in Connectivity	0	LF
21	Buried/Narrow Sidewalk	0	LF
22	Missing Sidewalk Connection to Bus Pads	0	LF
23	No Sidewalk Observed	0	LF
24	Corridor Severity Score	122.5	

Inventory	
Displacements_Inventory	
	Displacements Less Than 1"
	Displacements 1" or Greater
	Poor Surface Condition
	Sidewalk Joint Gap
Obstructions_Inventory	
	Utility Obstruction
	Traffic Signal Obstruction
	Sign Obstruction
	Temporary Obstruction
	Overhead Vegetation
	Low Vegetation
	Other Obstruction
	Residential Driveway
	Commercial Driveway
	Not Surveyed
	Missing Sidewalk
	Missing Bus Connection
	Buried/Narrow Sidewalk
	See Feature Comments
	Sidewalk Collection Path
	Curb Ramps in Adjacent Corridor
	Island Curb Cuts in Adjacent Corridor
	Signals in Adjacent Corridors
	Bus Stop Pads In Adjacent Corridor
Running Slope (Aligned)	
[ Not Costed ]	
	5.1 – 8.3%
	8.4 – 10.0%
	10.1 – 12.5%
	> 12.5%

ADA Compliance Cost Estimate **					
Item	Description	Quantity	Unit	Unit Price	Item Cost
1	Discontinuity Displacement <= 1"	0	EA	\$190.00	\$ 0.00
2	Discontinuity Displacement > 1"	0	EA	\$690.00	\$ 0.00
3	Discontinuity Opening > 0.5"	0	EA	\$90.00	\$ 0.00
4	Poor Surface Condition	0	SY	\$90.00	\$ 0.00
5	Utility Obstruction	0	EA	\$6210.00	\$ 0.00
6	Traffic Signal Obstruction	0	EA	\$2490.00	\$ 0.00
7	Sign Obstruction	0	EA	\$1870.00	\$ 0.00
8	Low Vegetative Obstruction	0	EA	\$190.00	\$ 0.00
9	Overhead Vegetative Obstruction	0	EA	\$380.00	\$ 0.00
10	Other Obstruction	0	EA	\$1870.00	\$ 0.00
11	Commercial Entrance	0	LF	\$440.00	\$ 0.00
12	Residential Entrance	0	LF	\$370.00	\$ 0.00
13	Running Slope Violation	0	SY	\$90.00	\$ 0.00
14	Cross Slope Violation	0	SY	\$90.00	\$ 0.00
15	Running and Cross Slope violations	0	SY	\$90.00	\$ 0.00
16	Non-Compliant Curb Ramps and Total Cost*	3	EA	VARIES	\$ 6955.00
17	Non-Compliant Island Curb Cuts and Total Cost*	0	EA	VARIES	\$ 0.00
18	Non-Compliant Signal Ped Button Posts and Total Cost* 2		EA	VARIES	\$ 10433.00
19	Non-Compliant Bus Pads and Total Cost*	0	EA	VARIES	\$ 0.00
20	Missing Sidewalk/Gap in Connectivity	0	SY	\$70.00	\$ 0.00
21	Buried Sidewalk	0	SY	\$90.00	\$ 0.00
22	Missing Sidewalk Connection to Bus Pads	0	SY	\$70.00	\$ 0.00
Total:					\$ 17388.00

\* Note: Some items combined for display. See Unit Cost Table for specific Unit Costs for each type of obstruction, curb ramp, island, signal ped button post, or bus pad replacement. Missing sidewalk/gaps in connectivity reported together in compliance report and are separate in the GIS layers."

\*\* Note: ADA pedestrian issues have been identified and quantified in the ADA Survey Summary. There are instances where multiple issues can be resolved with a single corrective measure. The ADA Compliance Cost Estimate reflects the best estimation of quantities and cost to resolve all identified ADA issues.

Compliance	
Displacements	
	Displacements 1" or Greater
	Displacements Less Than 1"
	Poor Surface Condition
	Sidewalk Joint Gap
Obstructions	
	Utility Obstruction
	Traffic Signal Obstruction
	Sign Obstruction
	Temp or Private Obstruction
	Overhead Vegetation
	Low Vegetation
	Other Obstruction
	Driveway Violation
Running Slope (Deviated)	
[ Costed ]	
	5.1 – 8.3%
	8.4 – 10.0%
	10.1 – 12.5%
	> 12.5%
Cross Slope	
	2 - 3%
	3.01 - 4%
	4.01 - 7%
	> 7%
Visual Survey Items	
	Cross Slope
	Discontinuity
	Low Vegetation
	Other Obstruction
	Overhead Vegetation
	Poor Surface Condition
	Private Obstruction
	Sign Obstruction
	Traffic Signal Obstruction
	Utility Obstruction
	Commercial Driveway
	Residential Driveway
Overall Compliance	
	Non-Compliant Signal
	Compliant Signal
	Non-Compliant Bus Stop
	Compliant Bus Stop
	Non-Compliant Curb Ramp
	Compliant Curb Ramp
	Non-Compliant Curb Cut
	Compliant Curb Cut
Sidewalk Discontinuity	
	Not Surveyed
	Missing Sidewalk
	Missing Bus Connection
	Buried/Narrow Sidewalk
	See Feature Comments



Access Compliance Report - Public Rights-of-Way  
(Corridor: Sidewalk & Intersection Items)



ADA Survey Summary			
Item	Description	Quantity	Unit
1	Discontinuity Displacement <= 1"	0	EA
2	Discontinuity Displacement > 1"	1	EA
3	Discontinuity Opening > 0.5"	0	EA
4	Poor Surface Condition	11	SY
5	Utility Obstruction	2	EA
6	Traffic Signal Obstruction	0	EA
7	Sign Obstruction	1	EA
8	Temp/Private Obstruction	0	EA
9	Low Vegetative Obstruction	0	EA
10	Overhead Vegetative Obstruction	0	EA
11	Other Obstruction*	0	EA
12	Commercial Entrance	75	LF
13	Residential Entrance	0	LF
14	Total Sidewalk Length Assessed	1349	LF
15	Average Sidewalk Width	54	IN
16	Curb Ramps In Page Report	5	EA
17	Island Curb Cuts In Page Report	0	EA
18	Signal Ped Button Posts in Page Report	0	EA
19	Bus Pads In Page Report	0	EA
20	Missing Sidewalk/Gaps in Connectivity	0	LF
21	Buried/Narrow Sidewalk	0	LF
22	Missing Sidewalk Connection to Bus Pads	0	LF
23	No Sidewalk Observed	0	LF
24	Corridor Severity Score	54.11	

Inventory	
Displacements_Inventory	
◆	Displacements Less Than 1"
◆	Displacements 1" or Greater
■	Poor Surface Condition
◆	Sidewalk Joint Gap
Obstructions_Inventory	
○	Utility Obstruction
◆	Traffic Signal Obstruction
◆	Sign Obstruction
◆	Temporary Obstruction
◆	Overhead Vegetation
◆	Low Vegetation
◆	Other Obstruction
■	Residential Driveway
■	Commercial Driveway
—	Not Surveyed
—	Missing Sidewalk
—	Missing Bus Connection
—	Buried/Narrow Sidewalk
—	See Feature Comments
—	Sidewalk Collection Path
♿	Curb Ramps in Adjacent Corridor
⌂	Island Curb Cuts in Adjacent Corridor
Ⓜ	Signals in Adjacent Corridors
Ⓡ	Bus Stop Pads In Adjacent Corridor
Running Slope (Aligned)	
[ Not Costed ]	
—	5.1 – 8.3%
—	8.4 – 10.0%
—	10.1 – 12.5%
—	> 12.5%

ADA Compliance Cost Estimate **					
Item	Description	Quantity	Unit	Unit Price	Item Cost
1	Discontinuity Displacement <= 1"	0	EA	\$190.00	\$ 0.00
2	Discontinuity Displacement > 1"	1	EA	\$690.00	\$ 690.00
3	Discontinuity Opening > 0.5"	0	EA	\$90.00	\$ 0.00
4	Poor Surface Condition	11	SY	\$90.00	\$ 1000.00
5	Utility Obstruction	2	EA	\$6210.00	\$ 12420.00
6	Traffic Signal Obstruction	0	EA	\$2490.00	\$ 0.00
7	Sign Obstruction	1	EA	\$1870.00	\$ 1870.00
8	Low Vegetative Obstruction	0	EA	\$190.00	\$ 0.00
9	Overhead Vegetative Obstruction	0	EA	\$380.00	\$ 0.00
10	Other Obstruction	0	EA	\$1870.00	\$ 0.00
11	Commercial Entrance	75	LF	\$440.00	\$ 33000.00
12	Residential Entrance	0	LF	\$370.00	\$ 0.00
13	Running Slope Violation	0	SY	\$90.00	\$ 0.00
14	Cross Slope Violation	0	SY	\$90.00	\$ 0.00
15	Running and Cross Slope violations	0	SY	\$90.00	\$ 0.00
16	Non-Compliant Curb Ramps and Total Cost*	5	EA	VARIES	\$ 11426.00
17	Non-Compliant Island Curb Cuts and Total Cost*	0	EA	VARIES	\$ 0.00
18	Non-Compliant Signal Ped Button Posts and Total Cost*	0	EA	VARIES	\$ 0.00
19	Non-Compliant Bus Pads and Total Cost*	0	EA	VARIES	\$ 0.00
20	Missing Sidewalk/Gap in Connectivity	0	SY	\$70.00	\$ 0.00
21	Buried Sidewalk	0	SY	\$90.00	\$ 0.00
22	Missing Sidewalk Connection to Bus Pads	0	SY	\$70.00	\$ 0.00
Total:					\$ 60406.00

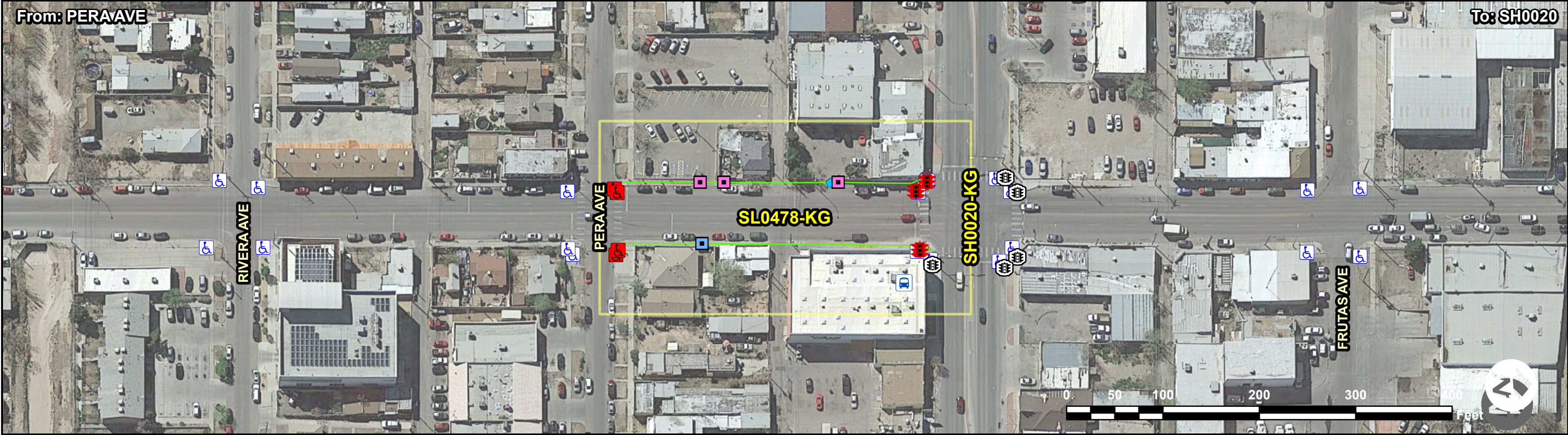
\* Note: Some items combined for display. See Unit Cost Table for specific Unit Costs for each type of obstruction, curb ramp, island, signal ped button post, or bus pad replacement. Missing sidewalk/gaps in connectivity reported together in compliance report and are separate in the GIS layers."

\*\* Note: ADA pedestrian issues have been identified and quantified in the ADA Survey Summary. There are instances where multiple issues can be resolved with a single corrective measure. The ADA Compliance Cost Estimate reflects the best estimation of quantities and cost to resolve all identified ADA issues.

Compliance	
Displacements	
◆	Displacements 1" or Greater
◆	Displacements Less Than 1"
■	Poor Surface Condition
◆	Sidewalk Joint Gap
Obstructions	
●	Utility Obstruction
◆	Traffic Signal Obstruction
○	Sign Obstruction
○	Temp or Private Obstruction
●	Overhead Vegetation
●	Low Vegetation
○	Other Obstruction
+	Driveway Violation
Running Slope (Deviated)	
[ Costed ]	
—	5.1 – 8.3%
—	8.4 – 10.0%
—	10.1 – 12.5%
—	> 12.5%
Cross Slope	
—	2 - 3%
—	3.01 - 4%
—	4.01 - 7%
—	> 7%
Visual Survey Items	
◆	Cross Slope
◆	Discontinuity
■	Low Vegetation
■	Other Obstruction
■	Overhead Vegetation
◆	Poor Surface Condition
◆	Private Obstruction
◆	Sign Obstruction
◆	Traffic Signal Obstruction
◆	Utility Obstruction
■	Commercial Driveway
■	Residential Driveway
Overall Compliance	
⚠	Non-Compliant Signal
⚠	Compliant Signal
⚠	Non-Compliant Bus Stop
⚠	Compliant Bus Stop
⚠	Non-Compliant Curb Ramp
⚠	Compliant Curb Ramp
⚠	Non-Compliant Curb Cut
⚠	Compliant Curb Cut
Sidewalk Discontinuity	
—	Not Surveyed
—	Missing Sidewalk
—	Missing Bus Connection
—	Buried/Narrow Sidewalk
—	See Feature Comments



Access Compliance Report - Public Rights-of-Way  
(Corridor: Sidewalk & Intersection Items)



ADA Survey Summary			
Item	Description	Quantity	Unit
1	Discontinuity Displacement <= 1"	0	EA
2	Discontinuity Displacement > 1"	0	EA
3	Discontinuity Opening > 0.5"	0	EA
4	Poor Surface Condition	15	SY
5	Utility Obstruction	0	EA
6	Traffic Signal Obstruction	0	EA
7	Sign Obstruction	0	EA
8	Temp/Private Obstruction	0	EA
9	Low Vegetative Obstruction	0	EA
10	Overhead Vegetative Obstruction	0	EA
11	Other Obstruction*	0	EA
12	Commercial Entrance	75	LF
13	Residential Entrance	25	LF
14	Total Sidewalk Length Assessed	645	LF
15	Average Sidewalk Width	65	IN
16	Curb Ramps In Page Report	4	EA
17	Island Curb Cuts In Page Report	0	EA
18	Signal Ped Button Posts in Page Report	3	EA
19	Bus Pads In Page Report	0	EA
20	Missing Sidewalk/Gaps in Connectivity	0	LF
21	Buried/Narrow Sidewalk	0	LF
22	Missing Sidewalk Connection to Bus Pads	0	LF
23	No Sidewalk Observed	0	LF
24	Corridor Severity Score	144.97	

Inventory	
Displacements_Inventory	
◆	Displacements Less Than 1"
◆	Displacements 1" or Greater
■	Poor Surface Condition
◆	Sidewalk Joint Gap
Obstructions_Inventory	
○	Utility Obstruction
◆	Traffic Signal Obstruction
◆	Sign Obstruction
◇	Temporary Obstruction
◆	Overhead Vegetation
◆	Low Vegetation
◇	Other Obstruction
■	Residential Driveway
■	Commercial Driveway
—	Not Surveyed
—	Missing Sidewalk
—	Missing Bus Connection
—	Buried/Narrow Sidewalk
—	See Feature Comments
—	Sidewalk Collection Path
♿	Curb Ramps in Adjacent Corridor
♿	Island Curb Cuts in Adjacent Corridor
♿	Signals in Adjacent Corridors
♿	Bus Stop Pads In Adjacent Corridor
Running Slope (Aligned)	
[ Not Costed ]	
—	5.1 – 8.3%
—	8.4 – 10.0%
—	10.1 – 12.5%
—	> 12.5%

ADA Compliance Cost Estimate **					
Item	Description	Quantity	Unit	Unit Price	Item Cost
1	Discontinuity Displacement <= 1"	0	EA	\$190.00	\$ 0.00
2	Discontinuity Displacement > 1"	0	EA	\$690.00	\$ 0.00
3	Discontinuity Opening > 0.5"	0	EA	\$90.00	\$ 0.00
4	Poor Surface Condition	15	SY	\$90.00	\$ 1354.00
5	Utility Obstruction	0	EA	\$6210.00	\$ 0.00
6	Traffic Signal Obstruction	0	EA	\$2490.00	\$ 0.00
7	Sign Obstruction	0	EA	\$1870.00	\$ 0.00
8	Low Vegetative Obstruction	0	EA	\$190.00	\$ 0.00
9	Overhead Vegetative Obstruction	0	EA	\$380.00	\$ 0.00
10	Other Obstruction	0	EA	\$1870.00	\$ 0.00
11	Commercial Entrance	75	LF	\$440.00	\$ 33000.00
12	Residential Entrance	25	LF	\$370.00	\$ 9250.00
13	Running Slope Violation	0	SY	\$90.00	\$ 0.00
14	Cross Slope Violation	0	SY	\$90.00	\$ 0.00
15	Running and Cross Slope violations	0	SY	\$90.00	\$ 0.00
16	Non-Compliant Curb Ramps and Total Cost*	4	EA	VARIES	\$ 9439.00
17	Non-Compliant Island Curb Cuts and Total Cost*	0	EA	VARIES	\$ 0.00
18	Non-Compliant Signal Ped Button Posts and Total Cost*	3	EA	VARIES	\$ 9874.00
19	Non-Compliant Bus Pads and Total Cost*	0	EA	VARIES	\$ 0.00
20	Missing Sidewalk/Gap in Connectivity	0	SY	\$70.00	\$ 0.00
21	Buried Sidewalk	0	SY	\$90.00	\$ 0.00
22	Missing Sidewalk Connection to Bus Pads	0	SY	\$70.00	\$ 0.00
Total:					\$ 62917.00

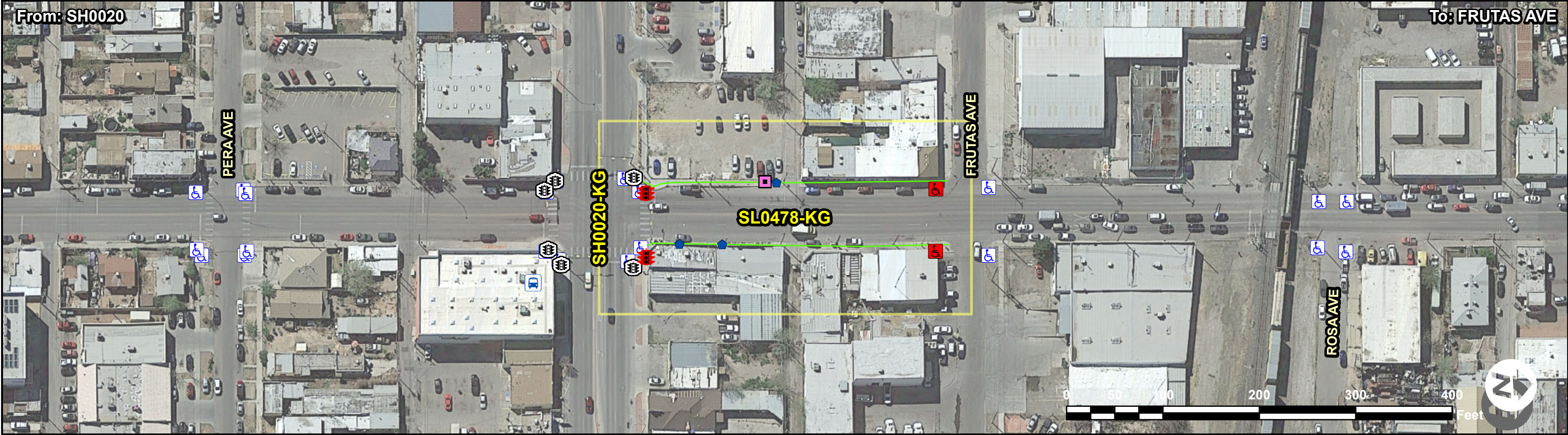
\* Note: Some items combined for display. See Unit Cost Table for specific Unit Costs for each type of obstruction, curb ramp, island, signal ped button post, or bus pad replacement. Missing sidewalk/gaps in connectivity reported together in compliance report and are separate in the GIS layers."

\*\* Note: ADA pedestrian issues have been identified and quantified in the ADA Survey Summary. There are instances where multiple issues can be resolved with a single corrective measure. The ADA Compliance Cost Estimate reflects the best estimation of quantities and cost to resolve all identified ADA issues.

Compliance	
Displacements	
✱	Displacements 1" or Greater
✱	Displacements Less Than 1"
■	Poor Surface Condition
✱	Sidewalk Joint Gap
Obstructions	
●	Utility Obstruction
●	Traffic Signal Obstruction
●	Sign Obstruction
○	Temp or Private Obstruction
●	Overhead Vegetation
●	Low Vegetation
○	Other Obstruction
+	Driveway Violation
Running Slope (Deviated)	
[ Costed ]	
—	5.1 – 8.3%
—	8.4 – 10.0%
—	10.1 – 12.5%
—	> 12.5%
Cross Slope	
—	2 - 3%
—	3.01 - 4%
—	4.01 - 7%
—	> 7%
Visual Survey Items	
◆	Cross Slope
◆	Discontinuity
■	Low Vegetation
■	Other Obstruction
■	Overhead Vegetation
■	Poor Surface Condition
■	Private Obstruction
■	Sign Obstruction
■	Traffic Signal Obstruction
■	Utility Obstruction
■	Commercial Driveway
■	Residential Driveway
Overall Compliance	
⚡	Non-Compliant Signal
⚡	Compliant Signal
⚡	Non-Compliant Bus Stop
⚡	Compliant Bus Stop
⚡	Non-Compliant Curb Ramp
⚡	Compliant Curb Ramp
⚡	Non-Compliant Curb Cut
⚡	Compliant Curb Cut
Sidewalk Discontinuity	
—	Not Surveyed
—	Missing Sidewalk
—	Missing Bus Connection
—	Buried/Narrow Sidewalk
—	See Feature Comments



Access Compliance Report - Public Rights-of-Way  
(Corridor: Sidewalk & Intersection Items)



ADA Survey Summary			
Item	Description	Quantity	Unit
1	Discontinuity Displacement <= 1"	0	EA
2	Discontinuity Displacement > 1"	0	EA
3	Discontinuity Opening > 0.5"	0	EA
4	Poor Surface Condition	0	SY
5	Utility Obstruction	3	EA
6	Traffic Signal Obstruction	0	EA
7	Sign Obstruction	0	EA
8	Temp/Private Obstruction	0	EA
9	Low Vegetative Obstruction	0	EA
10	Overhead Vegetative Obstruction	0	EA
11	Other Obstruction*	0	EA
12	Commercial Entrance	25	LF
13	Residential Entrance	0	LF
14	Total Sidewalk Length Assessed	643	LF
15	Average Sidewalk Width	65	IN
16	Curb Ramps In Page Report	2	EA
17	Island Curb Cuts In Page Report	0	EA
18	Signal Ped Button Posts in Page Report	2	EA
19	Bus Pads In Page Report	0	EA
20	Missing Sidewalk/Gaps in Connectivity	0	LF
21	Buried/Narrow Sidewalk	0	LF
22	Missing Sidewalk Connection to Bus Pads	0	LF
23	No Sidewalk Observed	0	LF
24	Corridor Severity Score	51.06	

Inventory	
Displacements_Inventory	
◆	Displacements Less Than 1"
◆	Displacements 1" or Greater
■	Poor Surface Condition
◆	Sidewalk Joint Gap
Obstructions_Inventory	
○	Utility Obstruction
◆	Traffic Signal Obstruction
◆	Sign Obstruction
◆	Temporary Obstruction
◆	Overhead Vegetation
◆	Low Vegetation
◆	Other Obstruction
■	Residential Driveway
■	Commercial Driveway
—	Not Surveyed
—	Missing Sidewalk
—	Missing Bus Connection
—	Buried/Narrow Sidewalk
—	See Feature Comments
—	Sidewalk Collection Path
♿	Curb Ramps in Adjacent Corridor
♿	Island Curb Cuts in Adjacent Corridor
♿	Signals in Adjacent Corridors
♿	Bus Stop Pads In Adjacent Corridor
Running Slope (Aligned)	
[ Not Costed ]	
—	5.1 – 8.3%
—	8.4 – 10.0%
—	10.1 – 12.5%
—	> 12.5%

ADA Compliance Cost Estimate **					
Item	Description	Quantity	Unit	Unit Price	Item Cost
1	Discontinuity Displacement <= 1"	0	EA	\$190.00	\$ 0.00
2	Discontinuity Displacement > 1"	0	EA	\$690.00	\$ 0.00
3	Discontinuity Opening > 0.5"	0	EA	\$90.00	\$ 0.00
4	Poor Surface Condition	0	SY	\$90.00	\$ 0.00
5	Utility Obstruction	3	EA	\$6210.00	\$ 18630.00
6	Traffic Signal Obstruction	0	EA	\$2490.00	\$ 0.00
7	Sign Obstruction	0	EA	\$1870.00	\$ 0.00
8	Low Vegetative Obstruction	0	EA	\$190.00	\$ 0.00
9	Overhead Vegetative Obstruction	0	EA	\$380.00	\$ 0.00
10	Other Obstruction	0	EA	\$1870.00	\$ 0.00
11	Commercial Entrance	25	LF	\$440.00	\$ 11000.00
12	Residential Entrance	0	LF	\$370.00	\$ 0.00
13	Running Slope Violation	0	SY	\$90.00	\$ 0.00
14	Cross Slope Violation	0	SY	\$90.00	\$ 0.00
15	Running and Cross Slope violations	0	SY	\$90.00	\$ 0.00
16	Non-Compliant Curb Ramps and Total Cost*	2	EA	VARIES	\$ 4471.00
17	Non-Compliant Island Curb Cuts and Total Cost*	0	EA	VARIES	\$ 0.00
18	Non-Compliant Signal Ped Button Posts and Total Cost*	2	EA	VARIES	\$ 3995.00
19	Non-Compliant Bus Pads and Total Cost*	0	EA	VARIES	\$ 0.00
20	Missing Sidewalk/Gap in Connectivity	0	SY	\$70.00	\$ 0.00
21	Buried Sidewalk	0	SY	\$90.00	\$ 0.00
22	Missing Sidewalk Connection to Bus Pads	0	SY	\$70.00	\$ 0.00
Total:					\$ 38096.00

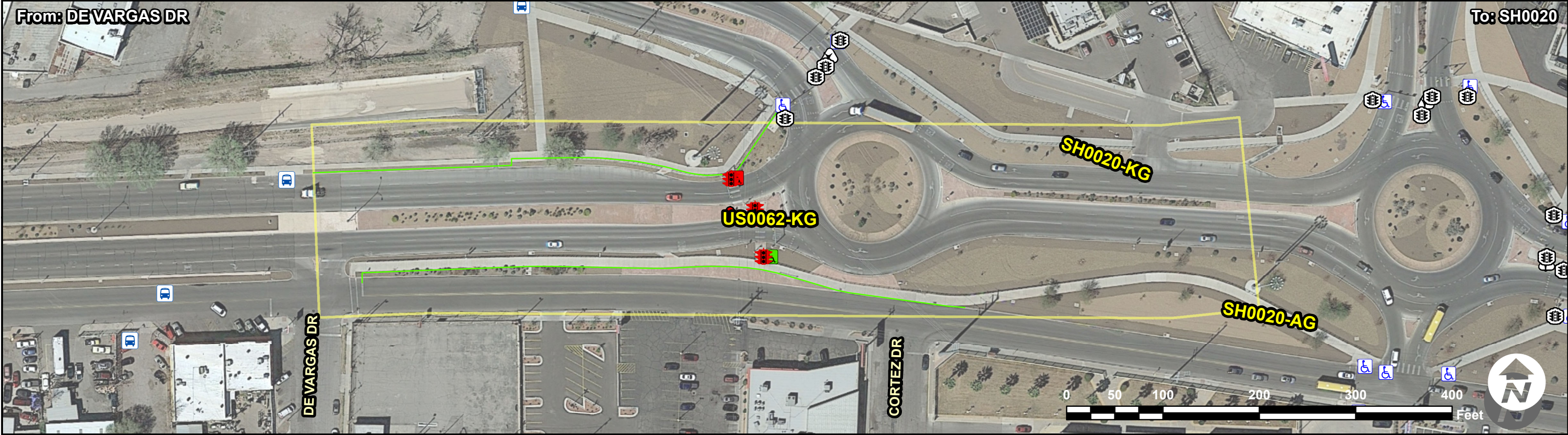
\* Note: Some items combined for display. See Unit Cost Table for specific Unit Costs for each type of obstruction, curb ramp, island, signal ped button post, or bus pad replacement. Missing sidewalk/gaps in connectivity reported together in compliance report and are separate in the GIS layers."

\*\* Note: ADA pedestrian issues have been identified and quantified in the ADA Survey Summary. There are instances where multiple issues can be resolved with a single corrective measure. The ADA Compliance Cost Estimate reflects the best estimation of quantities and cost to resolve all identified ADA issues.

Compliance	
Displacements	
◆	Displacements 1" or Greater
◆	Displacements Less Than 1"
■	Poor Surface Condition
◆	Sidewalk Joint Gap
Obstructions	
○	Utility Obstruction
◆	Traffic Signal Obstruction
○	Sign Obstruction
○	Temp or Private Obstruction
●	Overhead Vegetation
●	Low Vegetation
○	Other Obstruction
+	Driveway Violation
Running Slope (Deviated)	
[ Costed ]	
—	5.1 – 8.3%
—	8.4 – 10.0%
—	10.1 – 12.5%
—	> 12.5%
Cross Slope	
—	2 - 3%
—	3.01 - 4%
—	4.01 - 7%
—	> 7%
Visual Survey Items	
◆	Cross Slope
◆	Discontinuity
◆	Low Vegetation
◆	Other Obstruction
◆	Overhead Vegetation
◆	Poor Surface Condition
◆	Private Obstruction
◆	Sign Obstruction
◆	Traffic Signal Obstruction
◆	Utility Obstruction
■	Commercial Driveway
■	Residential Driveway
Overall Compliance	
♿	Non-Compliant Signal
♿	Compliant Signal
♿	Non-Compliant Bus Stop
♿	Compliant Bus Stop
♿	Non-Compliant Curb Ramp
♿	Compliant Curb Ramp
♿	Non-Compliant Curb Cut
♿	Compliant Curb Cut
Sidewalk Discontinuity	
—	Not Surveyed
—	Missing Sidewalk
—	Missing Bus Connection
—	Buried/Narrow Sidewalk
—	See Feature Comments



Access Compliance Report - Public Rights-of-Way  
(Corridor: Sidewalk & Intersection Items)



ADA Survey Summary			
Item	Description	Quantity	Unit
1	Discontinuity Displacement <= 1"	0	EA
2	Discontinuity Displacement > 1"	0	EA
3	Discontinuity Opening > 0.5"	0	EA
4	Poor Surface Condition	0	SY
5	Utility Obstruction	0	EA
6	Traffic Signal Obstruction	0	EA
7	Sign Obstruction	0	EA
8	Temp/Private Obstruction	0	EA
9	Low Vegetative Obstruction	0	EA
10	Overhead Vegetative Obstruction	0	EA
11	Other Obstruction*	0	EA
12	Commercial Entrance	0	LF
13	Residential Entrance	0	LF
14	Total Sidewalk Length Assessed	1162	LF
15	Average Sidewalk Width	60	IN
16	Curb Ramps In Page Report	2	EA
17	Island Curb Cuts In Page Report	1	EA
18	Signal Ped Button Posts in Page Report	4	EA
19	Bus Pads In Page Report	0	EA
20	Missing Sidewalk/Gaps in Connectivity	0	LF
21	Buried/Narrow Sidewalk	0	LF
22	Missing Sidewalk Connection to Bus Pads	0	LF
23	No Sidewalk Observed	0	LF
24	Corridor Severity Score	28.25	

Inventory	
Displacements_Inventory	
	Displacements Less Than 1"
	Displacements 1" or Greater
	Poor Surface Condition
	Sidewalk Joint Gap
Obstructions_Inventory	
	Utility Obstruction
	Traffic Signal Obstruction
	Sign Obstruction
	Temporary Obstruction
	Overhead Vegetation
	Low Vegetation
	Other Obstruction
	Residential Driveway
	Commercial Driveway
	Not Surveyed
	Missing Sidewalk
	Missing Bus Connection
	Buried/Narrow Sidewalk
	See Feature Comments
	Sidewalk Collection Path
	Curb Ramps in Adjacent Corridor
	Island Curb Cuts in Adjacent Corridor
	Signals in Adjacent Corridors
	Bus Stop Pads In Adjacent Corridor
Running Slope (Aligned)	
[ Not Costed ]	
	5.1 – 8.3%
	8.4 – 10.0%
	10.1 – 12.5%
	> 12.5%

ADA Compliance Cost Estimate **					
Item	Description	Quantity	Unit	Unit Price	Item Cost
1	Discontinuity Displacement <= 1"	0	EA	\$190.00	\$ 0.00
2	Discontinuity Displacement > 1"	0	EA	\$690.00	\$ 0.00
3	Discontinuity Opening > 0.5"	0	EA	\$90.00	\$ 0.00
4	Poor Surface Condition	0	SY	\$90.00	\$ 0.00
5	Utility Obstruction	0	EA	\$6210.00	\$ 0.00
6	Traffic Signal Obstruction	0	EA	\$2490.00	\$ 0.00
7	Sign Obstruction	0	EA	\$1870.00	\$ 0.00
8	Low Vegetative Obstruction	0	EA	\$190.00	\$ 0.00
9	Overhead Vegetative Obstruction	0	EA	\$380.00	\$ 0.00
10	Other Obstruction	0	EA	\$1870.00	\$ 0.00
11	Commercial Entrance	0	LF	\$440.00	\$ 0.00
12	Residential Entrance	0	LF	\$370.00	\$ 0.00
13	Running Slope Violation	0	SY	\$90.00	\$ 0.00
14	Cross Slope Violation	0	SY	\$90.00	\$ 0.00
15	Running and Cross Slope violations	0	SY	\$90.00	\$ 0.00
16	Non-Compliant Curb Ramps and Total Cost*	1	EA	VARIES	\$ 2236.00
17	Non-Compliant Island Curb Cuts and Total Cost*	1	EA	VARIES	\$ 14780.00
18	Non-Compliant Signal Ped Button Posts and Total Cost* 4		EA	VARIES	\$ 10060.00
19	Non-Compliant Bus Pads and Total Cost*	0	EA	VARIES	\$ 0.00
20	Missing Sidewalk/Gap in Connectivity	0	SY	\$70.00	\$ 0.00
21	Buried Sidewalk	0	SY	\$90.00	\$ 0.00
22	Missing Sidewalk Connection to Bus Pads	0	SY	\$70.00	\$ 0.00
Total:					\$ 27076.00

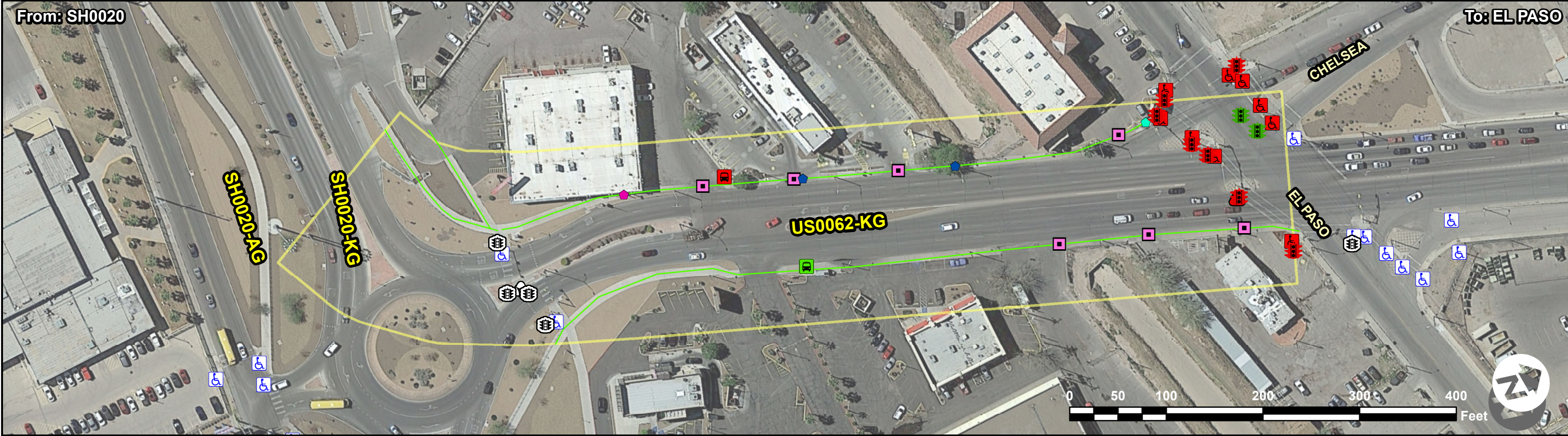
\* Note: Some items combined for display. See Unit Cost Table for specific Unit Costs for each type of obstruction, curb ramp, island, signal ped button post, or bus pad replacement. Missing sidewalk/gaps in connectivity reported together in compliance report and are separate in the GIS layers."

\*\* Note: ADA pedestrian issues have been identified and quantified in the ADA Survey Summary. There are instances where multiple issues can be resolved with a single corrective measure. The ADA Compliance Cost Estimate reflects the best estimation of quantities and cost to resolve all identified ADA issues.

Compliance	
Displacements	
	Displacements 1" or Greater
	Displacements Less Than 1"
	Poor Surface Condition
	Sidewalk Joint Gap
Obstructions	
	Utility Obstruction
	Traffic Signal Obstruction
	Sign Obstruction
	Temp or Private Obstruction
	Overhead Vegetation
	Low Vegetation
	Other Obstruction
	Driveway Violation
Running Slope (Deviated)	
[ Costed ]	
	5.1 – 8.3%
	8.4 – 10.0%
	10.1 – 12.5%
	> 12.5%
Cross Slope	
	2 - 3%
	3.01 - 4%
	4.01 - 7%
	> 7%
Visual Survey Items	
	Cross Slope
	Discontinuity
	Low Vegetation
	Other Obstruction
	Overhead Vegetation
	Poor Surface Condition
	Private Obstruction
	Sign Obstruction
	Traffic Signal Obstruction
	Utility Obstruction
	Commercial Driveway
	Residential Driveway
Overall Compliance	
	Non-Compliant Signal
	Compliant Signal
	Non-Compliant Bus Stop
	Compliant Bus Stop
	Non-Compliant Curb Ramp
	Compliant Curb Ramp
	Non-Compliant Curb Cut
	Compliant Curb Cut
Sidewalk Discontinuity	
	Not Surveyed
	Missing Sidewalk
	Missing Bus Connection
	Buried/Narrow Sidewalk
	See Feature Comments



Access Compliance Report - Public Rights-of-Way  
(Corridor: Sidewalk & Intersection Items)



ADA Survey Summary			
Item	Description	Quantity	Unit
1	Discontinuity Displacement <= 1"	0	EA
2	Discontinuity Displacement > 1"	0	EA
3	Discontinuity Opening > 0.5"	0	EA
4	Poor Surface Condition	0	SY
5	Utility Obstruction	2	EA
6	Traffic Signal Obstruction	1	EA
7	Sign Obstruction	1	EA
8	Temp/Private Obstruction	0	EA
9	Low Vegetative Obstruction	0	EA
10	Overhead Vegetative Obstruction	0	EA
11	Other Obstruction*	0	EA
12	Commercial Entrance	175	LF
13	Residential Entrance	0	LF
14	Total Sidewalk Length Assessed	1792	LF
15	Average Sidewalk Width	65	IN
16	Curb Ramps In Page Report	9	EA
17	Island Curb Cuts In Page Report	1	EA
18	Signal Ped Button Posts in Page Report	9	EA
19	Bus Pads In Page Report	2	EA
20	Missing Sidewalk/Gaps in Connectivity	0	LF
21	Buried/Narrow Sidewalk	0	LF
22	Missing Sidewalk Connection to Bus Pads	0	LF
23	No Sidewalk Observed	0	LF
24	Corridor Severity Score	122.14	

Inventory	
Displacements_Inventory	
◆	Displacements Less Than 1"
◆	Displacements 1" or Greater
■	Poor Surface Condition
◆	Sidewalk Joint Gap
Obstructions_Inventory	
○	Utility Obstruction
◆	Traffic Signal Obstruction
◆	Sign Obstruction
◆	Temporary Obstruction
◆	Overhead Vegetation
◆	Low Vegetation
◆	Other Obstruction
■	Residential Driveway
■	Commercial Driveway
—	Not Surveyed
—	Missing Sidewalk
—	Missing Bus Connection
—	Buried/Narrow Sidewalk
—	See Feature Comments
—	Sidewalk Collection Path
♿	Curb Ramps in Adjacent Corridor
♿	Island Curb Cuts in Adjacent Corridor
♿	Signals in Adjacent Corridors
♿	Bus Stop Pads In Adjacent Corridor
Running Slope (Aligned)	
[ Not Costed ]	
—	5.1 – 8.3%
—	8.4 – 10.0%
—	10.1 – 12.5%
—	> 12.5%

ADA Compliance Cost Estimate **					
Item	Description	Quantity	Unit	Unit Price	Item Cost
1	Discontinuity Displacement <= 1"	0	EA	\$190.00	\$ 0.00
2	Discontinuity Displacement > 1"	0	EA	\$690.00	\$ 0.00
3	Discontinuity Opening > 0.5"	0	EA	\$90.00	\$ 0.00
4	Poor Surface Condition	0	SY	\$90.00	\$ 0.00
5	Utility Obstruction	2	EA	\$6210.00	\$ 12420.00
6	Traffic Signal Obstruction	1	EA	\$2490.00	\$ 2490.00
7	Sign Obstruction	1	EA	\$1870.00	\$ 1870.00
8	Low Vegetative Obstruction	0	EA	\$190.00	\$ 0.00
9	Overhead Vegetative Obstruction	0	EA	\$380.00	\$ 0.00
10	Other Obstruction	0	EA	\$1870.00	\$ 0.00
11	Commercial Entrance	175	LF	\$440.00	\$ 77000.00
12	Residential Entrance	0	LF	\$370.00	\$ 0.00
13	Running Slope Violation	0	SY	\$90.00	\$ 0.00
14	Cross Slope Violation	0	SY	\$90.00	\$ 0.00
15	Running and Cross Slope violations	0	SY	\$90.00	\$ 0.00
16	Non-Compliant Curb Ramps and Total Cost*	9	EA	VARIES	\$ 32044.00
17	Non-Compliant Island Curb Cuts and Total Cost*	1	EA	VARIES	\$ 7328.00
18	Non-Compliant Signal Ped Button Posts and Total Cost*	7	EA	VARIES	\$ 25439.00
19	Non-Compliant Bus Pads and Total Cost*	1	EA	VARIES	\$ 1615.00
20	Missing Sidewalk/Gap in Connectivity	0	SY	\$70.00	\$ 0.00
21	Buried Sidewalk	0	SY	\$90.00	\$ 0.00
22	Missing Sidewalk Connection to Bus Pads	0	SY	\$70.00	\$ 0.00
Total:					\$ 160205.00

\* Note: Some items combined for display. See Unit Cost Table for specific Unit Costs for each type of obstruction, curb ramp, island, signal ped button post, or bus pad replacement. Missing sidewalk/gaps in connectivity reported together in compliance report and are separate in the GIS layers."

\*\* Note: ADA pedestrian issues have been identified and quantified in the ADA Survey Summary. There are instances where multiple issues can be resolved with a single corrective measure. The ADA Compliance Cost Estimate reflects the best estimation of quantities and cost to resolve all identified ADA issues.

Compliance	
Displacements	
◆	Displacements 1" or Greater
◆	Displacements Less Than 1"
■	Poor Surface Condition
◆	Sidewalk Joint Gap
Obstructions	
○	Utility Obstruction
◆	Traffic Signal Obstruction
○	Sign Obstruction
○	Temp or Private Obstruction
●	Overhead Vegetation
●	Low Vegetation
○	Other Obstruction
+	Driveway Violation
Running Slope (Deviated)	
[ Costed ]	
—	5.1 – 8.3%
—	8.4 – 10.0%
—	10.1 – 12.5%
—	> 12.5%
Cross Slope	
—	2 - 3%
—	3.01 - 4%
—	4.01 - 7%
—	> 7%
Visual Survey Items	
◆	Cross Slope
◆	Discontinuity
◆	Low Vegetation
◆	Other Obstruction
◆	Overhead Vegetation
◆	Poor Surface Condition
◆	Private Obstruction
◆	Sign Obstruction
◆	Traffic Signal Obstruction
◆	Utility Obstruction
■	Commercial Driveway
■	Residential Driveway
Overall Compliance	
⚡	Non-Compliant Signal
⚡	Compliant Signal
⚡	Non-Compliant Bus Stop
⚡	Compliant Bus Stop
⚡	Non-Compliant Curb Ramp
⚡	Compliant Curb Ramp
⚡	Non-Compliant Curb Cut
⚡	Compliant Curb Cut
Sidewalk Discontinuity	
—	Not Surveyed
—	Missing Sidewalk
—	Missing Bus Connection
—	Buried/Narrow Sidewalk
—	See Feature Comments